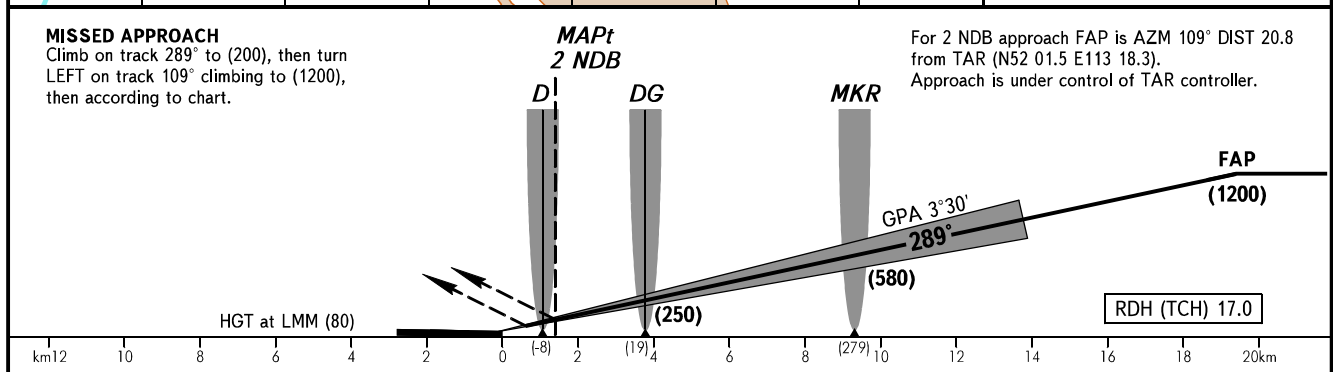
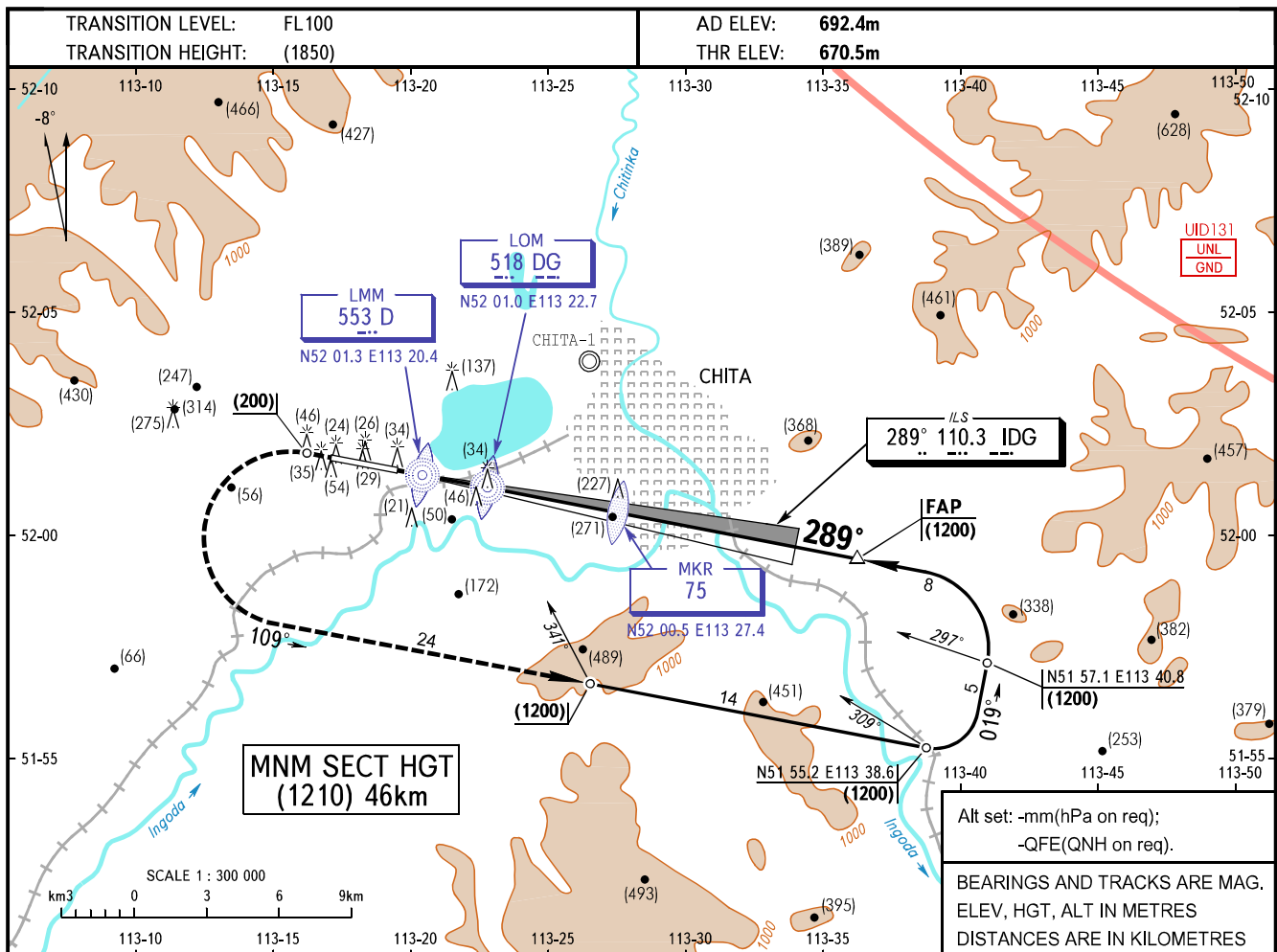


**INSTRUMENT
APPROACH
CHART - ICAO**

RADAR	122.0
TOWER	118.1

**CHITA, RUSSIA
KADALA
ILS, 2 NDB RWY 29**



OCA/H		A	B	C	D	
Straight-in Approach	ILS	715(45)	718(48)	722(52)	725(55)	
	LOM(DG), MKR	WO RAD CTL	1276(606)	1276(606)	1276(606)	1276(606)
		With RAD CTL	844(174)	844(174)	844(174)	844(174)
	LOM(DG)	WO RAD CTL	1276(606)	1276(606)	1276(606)	1276(606)
		With RAD CTL	1200(530)	1200(530)	1200(530)	1200(530)
	2 NDB, MKR	WO RAD CTL	802(132)	802(132)	802(132)	802(132)
		With RAD CTL	772(102)	772(102)	772(102)	772(102)
	2 NDB	WO RAD CTL	1245(575)	1245(575)	1245(575)	1245(575)
With RAD CTL		1087(417)	1087(417)	1087(417)	1087(417)	

- WARNING:**
- On final turn an accidental operation of airborne marker may occur resulted from radio emission of nearby aerodrome.
 - Descending on final is authorized only after the ACFT is confirmed by ATC to have captured the glide path (by distance).
 - There is CHITA/Chita-1 AD RIGHT of approach heading. Landing heading is 151°/331°.
 - Descending below (580) before passing MKR - is PROHIBITED.

GROUND SPEED	km/h	150	180	210	240	270	300	330	360	390	420	450
LOM-THR 3800m	min:sec	1.31	1.16	1.05	0.57	0.51	0.46	0.41	0.38	0.35	0.33	0.30
RATE OF DESCENT (Grad 6.1%)	m/s	2.6	3.1	3.6	4.1	4.6	5.1	5.7	6.2	6.7	7.1	7.8