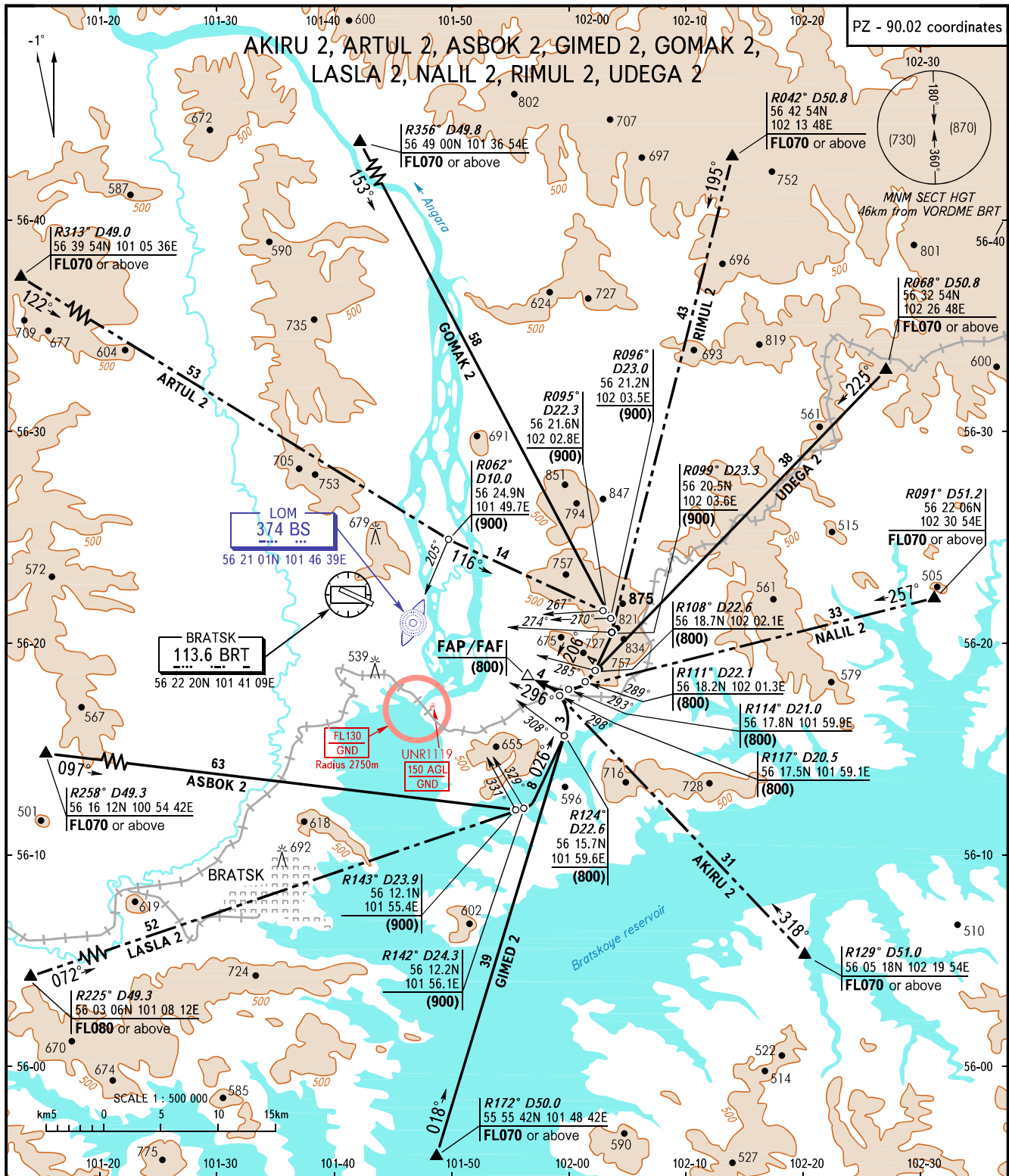


STANDARD ARRIVAL CHART  
INSTRUMENT (STAR) - ICAO

TRANSITION  
LEVEL : 1

PZ - 90.02 coordinates



APPROACH FL200 or below 118.100

TRANSITION LEVEL:

- 1 - FL060 when atmospheric pressure at aerodrome level is 715mm mercury column or above;
- FL070 when atmospheric pressure at aerodrome level is 688mm mercury column or above but less than 715mm mercury column;
- FL080 when atmospheric pressure at aerodrome level is less than 688mm mercury column.

WARNING

Flights over dam of hydroelectric power station within radius 2750m at altitudes up to FL130 are PROHIBITED.

BEARINGS AND TRACKS ARE MAGNETIC  
ALTITUDES, HEIGHTS AND ELEVATIONS ARE IN METRES  
DISTANCES ARE IN KILOMETRES

CHANGE: FL, FREQUENCY, MSH