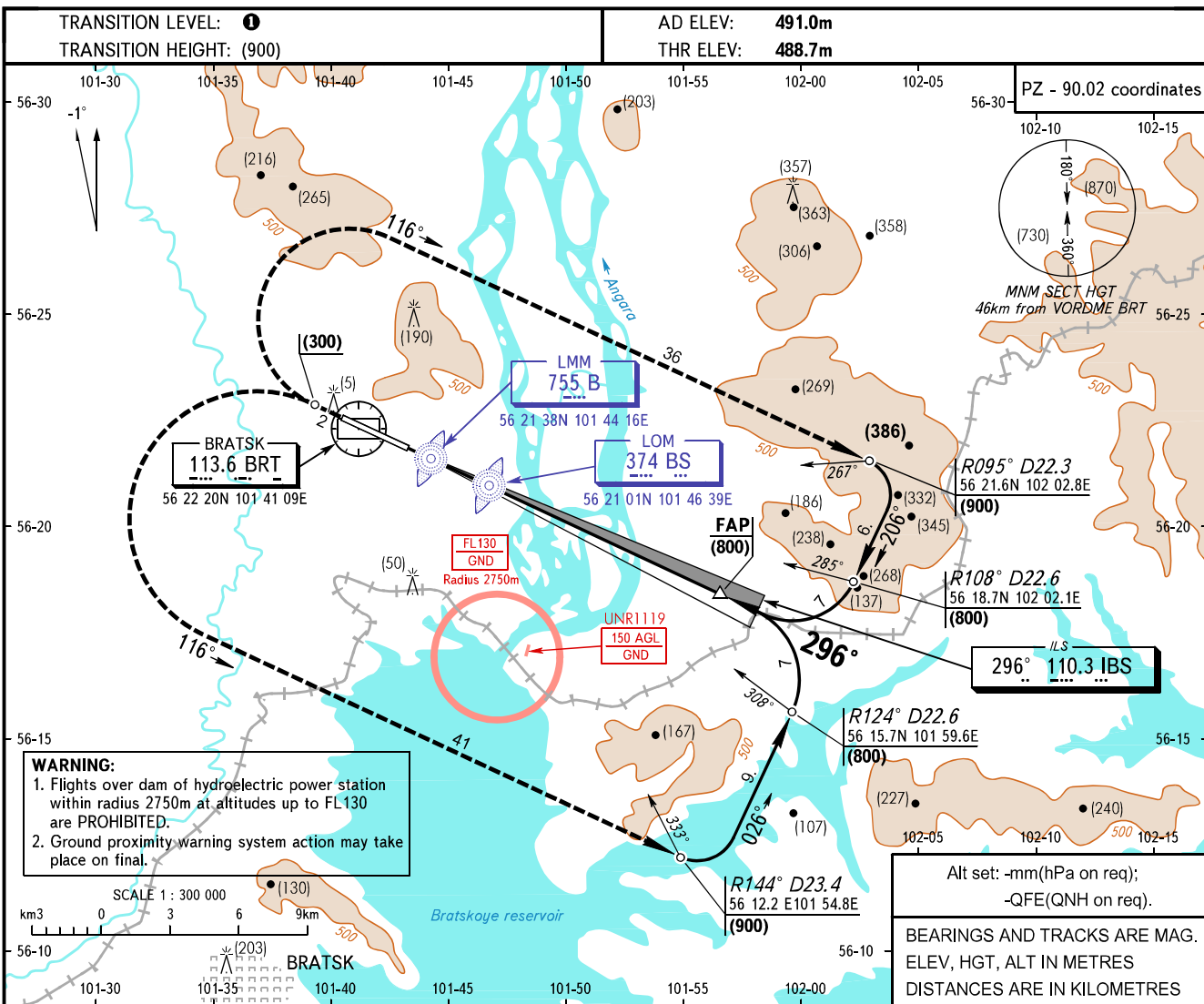


INSTRUMENT  
APPROACH  
CHART - ICAO

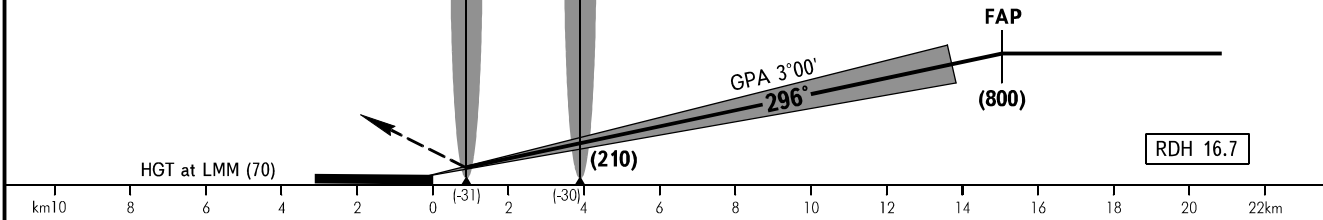
BRATSK, RUSSIA  
BRATSK  
ILS RWY 30

APPROACH 118.100



**MISSED APPROACH**  
Climb on track 296° to (300), then turn RIGHT (LEFT by ATC) on track 116° climbing to (900), then according to chart.

**WARNING**  
FAP is VORDME R116° D17.4. Descending from FAP shall be in accordance with VORDME information.



OCA/H		A	B	C	D	TRANSITION LEVEL:															
Straight-in Approach	ILS	532(44)	535(47)	538(50)	543(55)	① - FL060 when atmospheric pressure at aerodrome level is 715mm mercury column or above;															
						- FL070 when atmospheric pressure at aerodrome level is 688mm mercury column or above but less than 715mm mercury column;															
						- FL080 when atmospheric pressure at aerodrome level is less than 688mm mercury column.															
GROUND SPEED	km/h		150	180	210	240	270	300	330	360	390	420	450								
LOM-THR 3810m	min:sec		1.33	1.18	1.06	0.59	0.52	0.47	0.43	0.39	0.36	0.34	0.31								
RATE OF DESCENT	m/s		2.2	2.6	3.1	3.5	4.0	4.4	4.8	5.3	5.7	6.1	6.8								

CHANGE: New chart