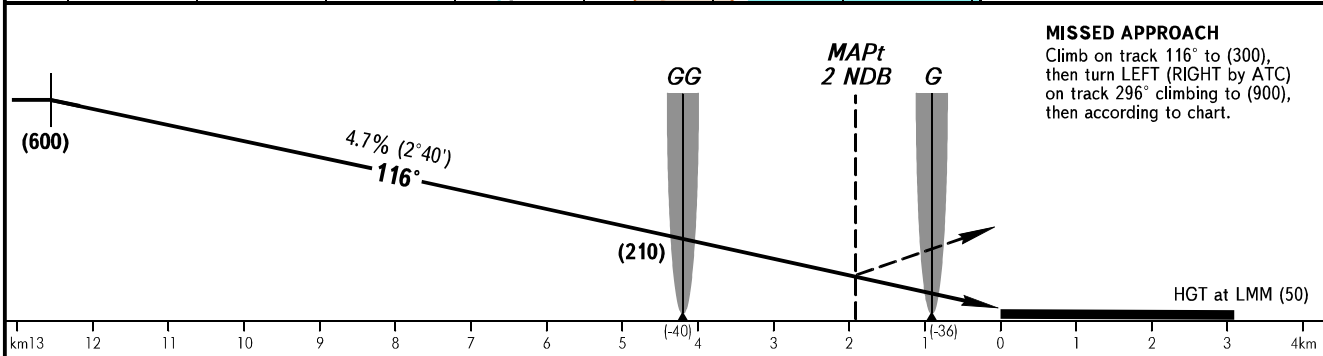
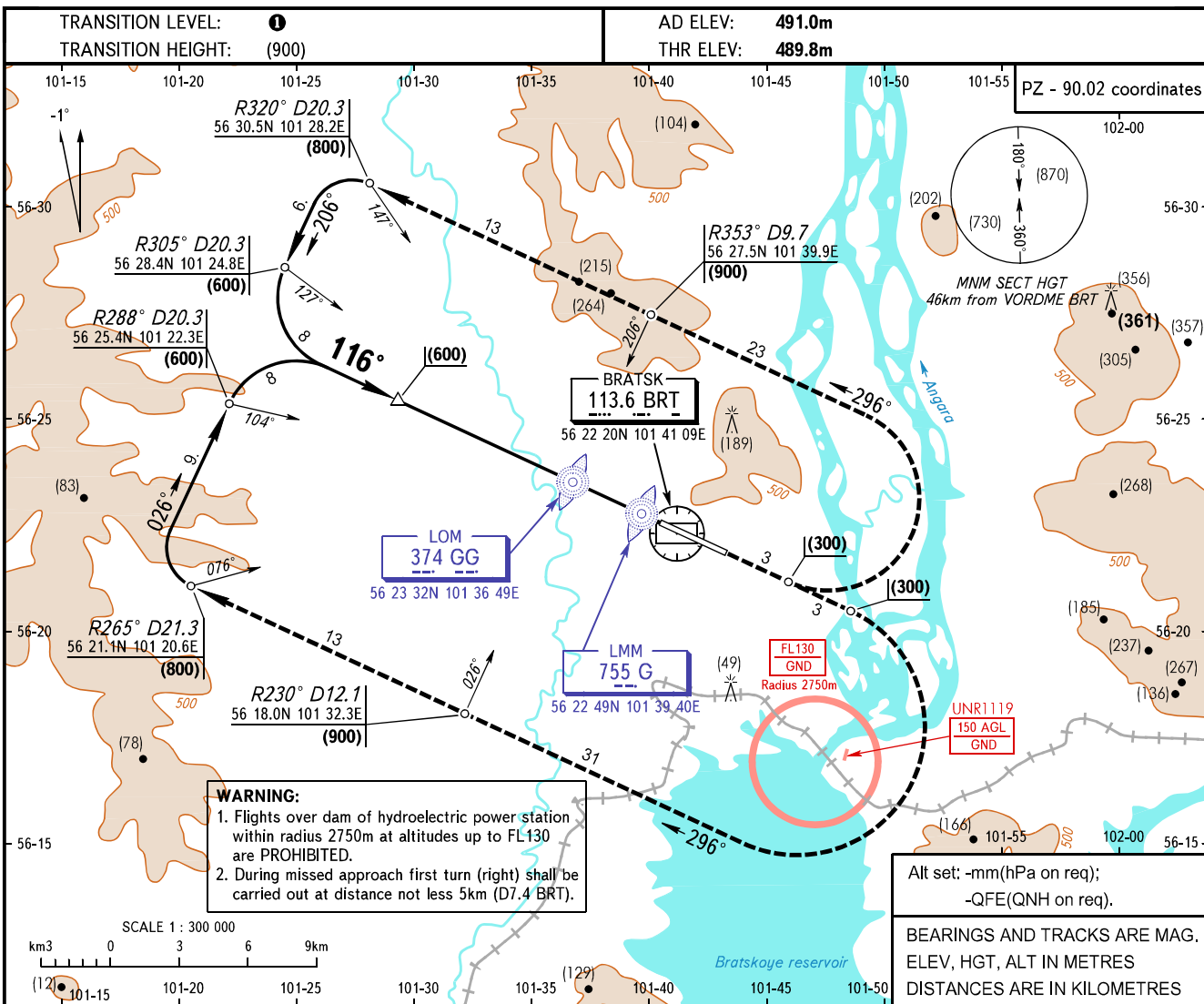


INSTRUMENT
APPROACH
CHART - ICAO

APPROACH **118.100**

BRATSK, RUSSIA
BRATSK
2 NDB, NDB RWY 12



| OCA/H | | A | B | C | D |
|-------------|-------|----------|----------|----------|----------|
| Straight-in | 2 NDB | 595(105) | 595(105) | 595(105) | 595(105) |
| | NDB | 595(105) | 595(105) | 595(105) | 595(105) |
| Approach | | | | | |

TRANSITION LEVEL:
 ① - FL060 when atmospheric pressure at aerodrome level is 715mm mercury column or above;
 - FL070 when atmospheric pressure at aerodrome level is 688mm mercury column or above but less than 715mm mercury column;
 - FL080 when atmospheric pressure at aerodrome level is less than 688mm mercury column.

| | | | | | | | | | | | | |
|-----------------|---------|------|------|------|------|------|------|------|------|------|------|------|
| GROUND SPEED | km/h | 150 | 180 | 210 | 240 | 270 | 300 | 330 | 360 | 390 | 420 | 450 |
| LOM-THR 4200m | min:sec | 1.41 | 1.24 | 1.12 | 1.03 | 0.56 | 0.50 | 0.46 | 0.42 | 0.39 | 0.36 | 0.34 |
| RATE OF DESCENT | m/s | 1.9 | 2.3 | 2.7 | 3.1 | 3.5 | 3.9 | 4.3 | 4.6 | 5.0 | 5.4 | 5.8 |