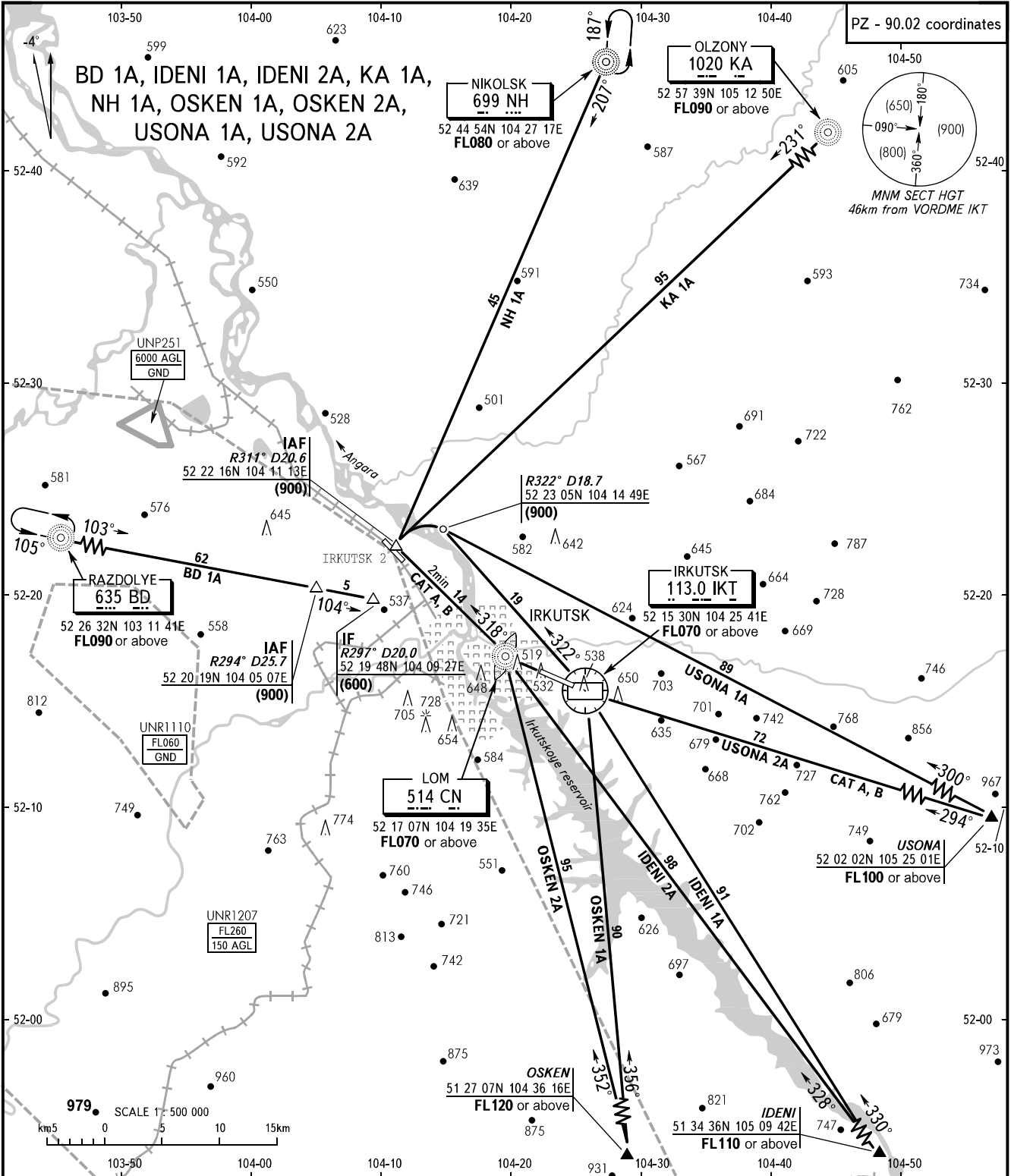


STANDARD ARRIVAL CHART
INSTRUMENT (STAR) ICAO

TRANSITION
LEVEL : **FL070**

IRKUTSK, RUSSIA
IRKUTSK
RWY 12



CHANGE: Route BD 1A-IAF

APPROACH	125.200
RADAR	119.300
TOWER	118.100

WARNING:
When restricted area UNR1207 is activated,
STAR procedures shall be available by
coordination with ATC.

BEARINGS AND TRACKS ARE MAGNETIC
ALTITUDES, HEIGHTS AND ELEVATIONS ARE IN METRES
DISTANCES ARE IN KILOMETRES