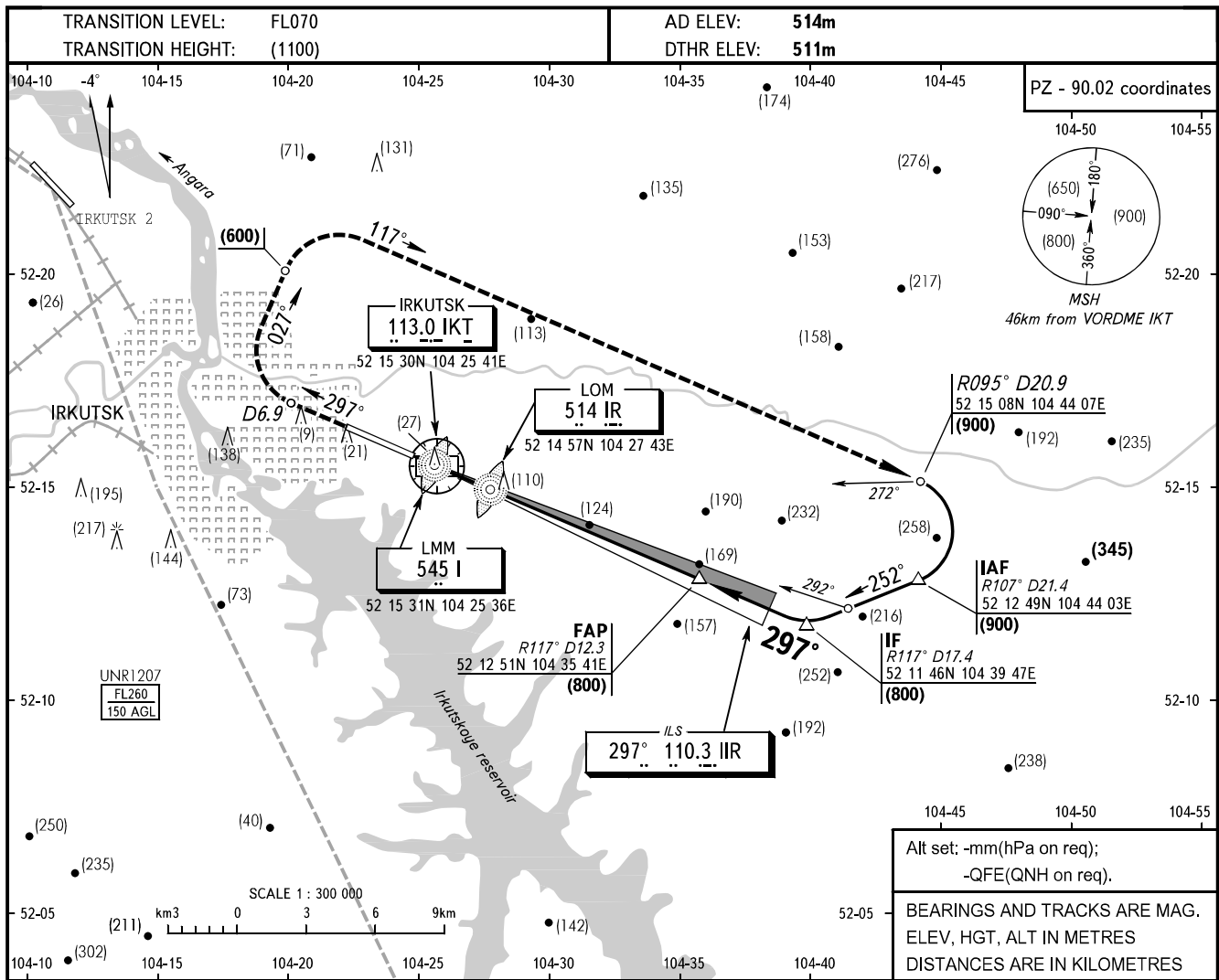


**INSTRUMENT
APPROACH
CHART - ICAO**

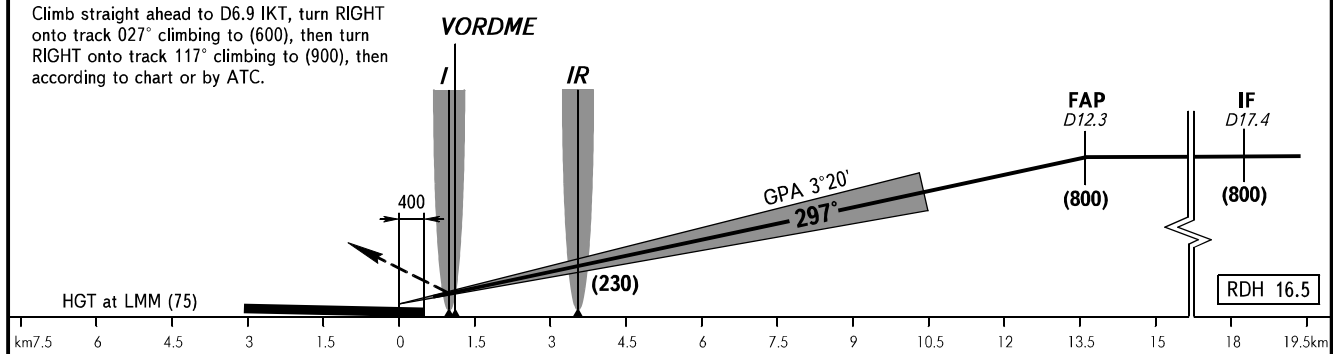
APPROACH	125.200
RADAR	119.300
TOWER	118.100

IRKUTSK, RUSSIA
IRKUTSK
ILS RWY 30



MISSED APPROACH

Climb straight ahead to D6.9 IKT, turn **RIGHT** onto track 027° climbing to (600), then turn **RIGHT** onto track 117° climbing to (900), then according to chart or by ATC.



OCA/H		A/HEL	B	C	D	D-widebody							
Straight-in Approach	ILS	CAT I	566(55)	568(57)	570(59)	573(62)							
GROUND SPEED		km/h	150	180	210	240	270	300	330	360	390	420	450
RATE OF DESCENT		m/s	2.4	2.9	3.4	3.9	4.4	4.9	5.3	5.8	6.3	6.8	7.3

WARNING
OCA/OCH for An-124 ACFT type - 575 (65).