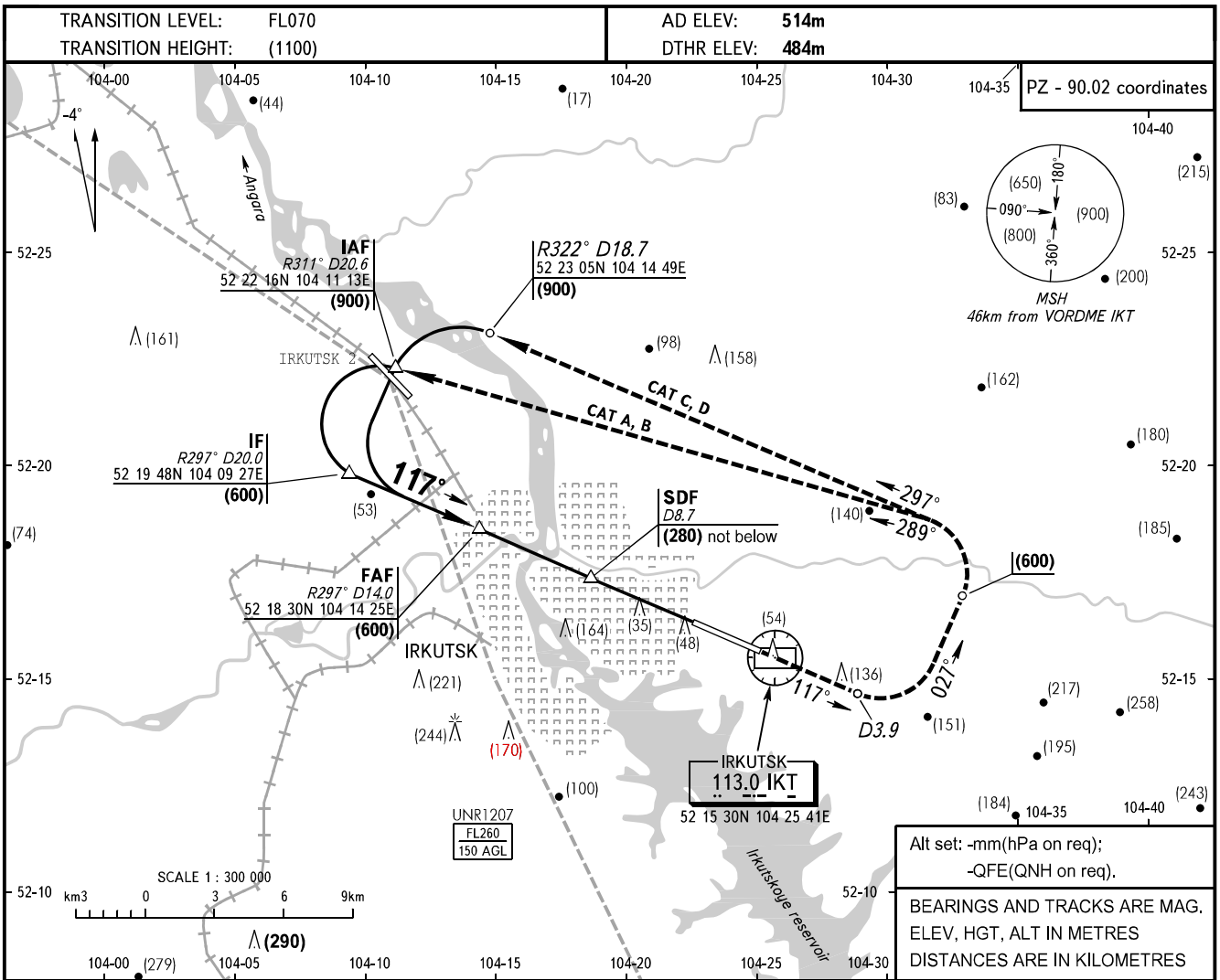


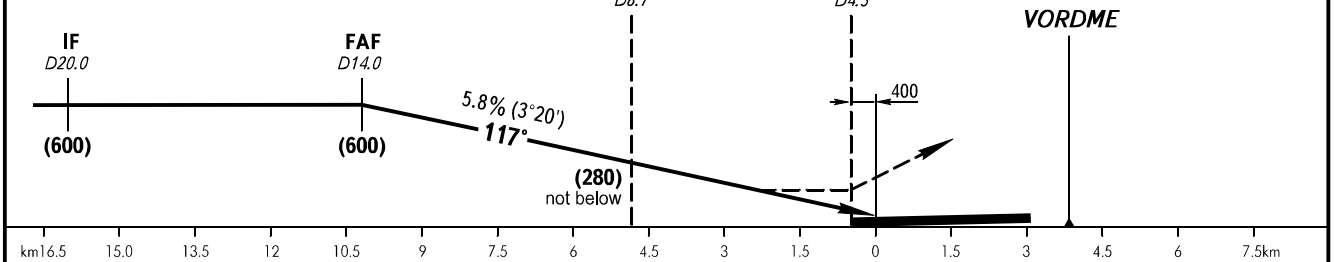
**INSTRUMENT  
APPROACH  
CHART - ICAO**

APPROACH	<b>125.200</b>
RADAR	<b>119.300</b>
TOWER	<b>118.100</b>

**IRKUTSK, RUSSIA**  
IRKUTSK  
VORDME RWY 12



**MISSED APPROACH**  
Climb straight ahead to D3.9 IKT, turn LEFT onto track 027° climbing to (600), then turn LEFT onto track 289° (CAT A, B) or 297° (CAT C, D) climbing to (900), then according to chart or by ATC.



OCA/H		A	B	C	D	D-widebody
Straight-in Approach	<b>VORDME</b> With SDF	607(123)	607(123)	607(123)	607(123)	607(123)
	WO SDF	662(178)	662(178)	662(178)	662(178)	662(178)

GROUND SPEED	km/h	150	180	210	240	270	300	330	360	390	420	450
RATE OF DESCENT	m/s	2.4	2.9	3.4	3.9	4.4	4.9	5.3	5.8	6.3	6.8	7.3

MAPt is over VORDME IKT, time reference is not applied.

CHANGE: HEIGHT (600)