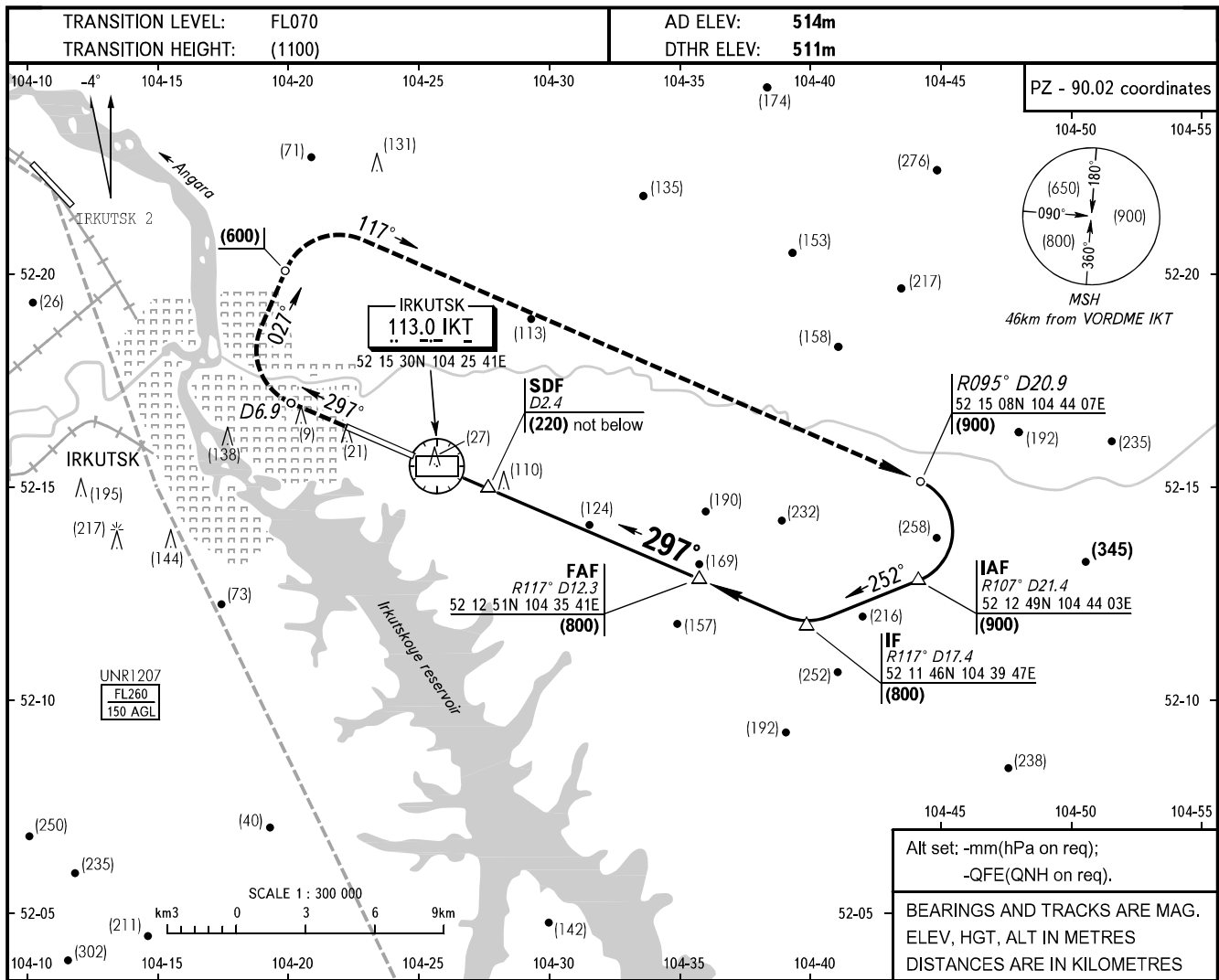


**INSTRUMENT
APPROACH
CHART - ICAO**

APPROACH	125.200
RADAR	119.300
TOWER	118.100

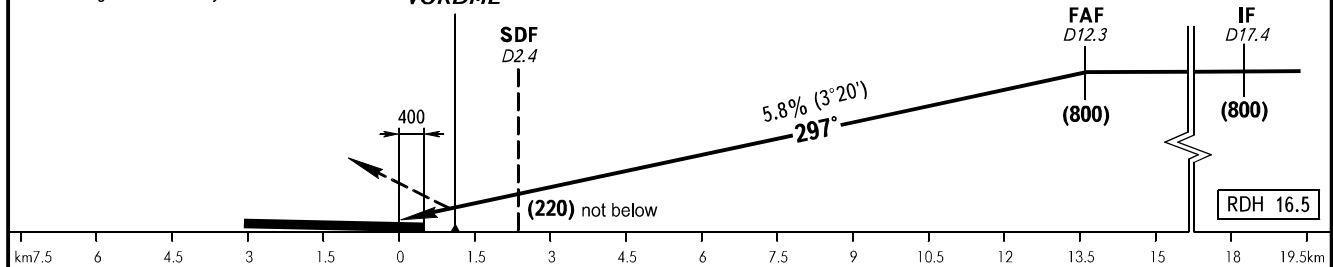
IRKUTSK, RUSSIA
IRKUTSK
VORDME RWY 30



MISSED APPROACH

Climb straight ahead to D6.9 IKT, turn RIGHT onto track 027° climbing to (600), then turn RIGHT onto track 117° climbing to (900), then according to chart or by ATC.

MAPt
VORDME



		OCA/H	A/HEL	B	C	D	D-widebody						
Straight-in Approach	VORDME	With SDF	613(102)	613(102)	613(102)	613(102)							
		WO SDF	710(199)	710(199)	710(199)	710(199)							
GROUND SPEED		km/h	150	180	210	240	270	300	330	360	390	420	450
RATE OF DESCENT		m/s	2.4	2.9	3.4	3.9	4.4	4.9	5.3	5.8	6.3	6.8	7.3