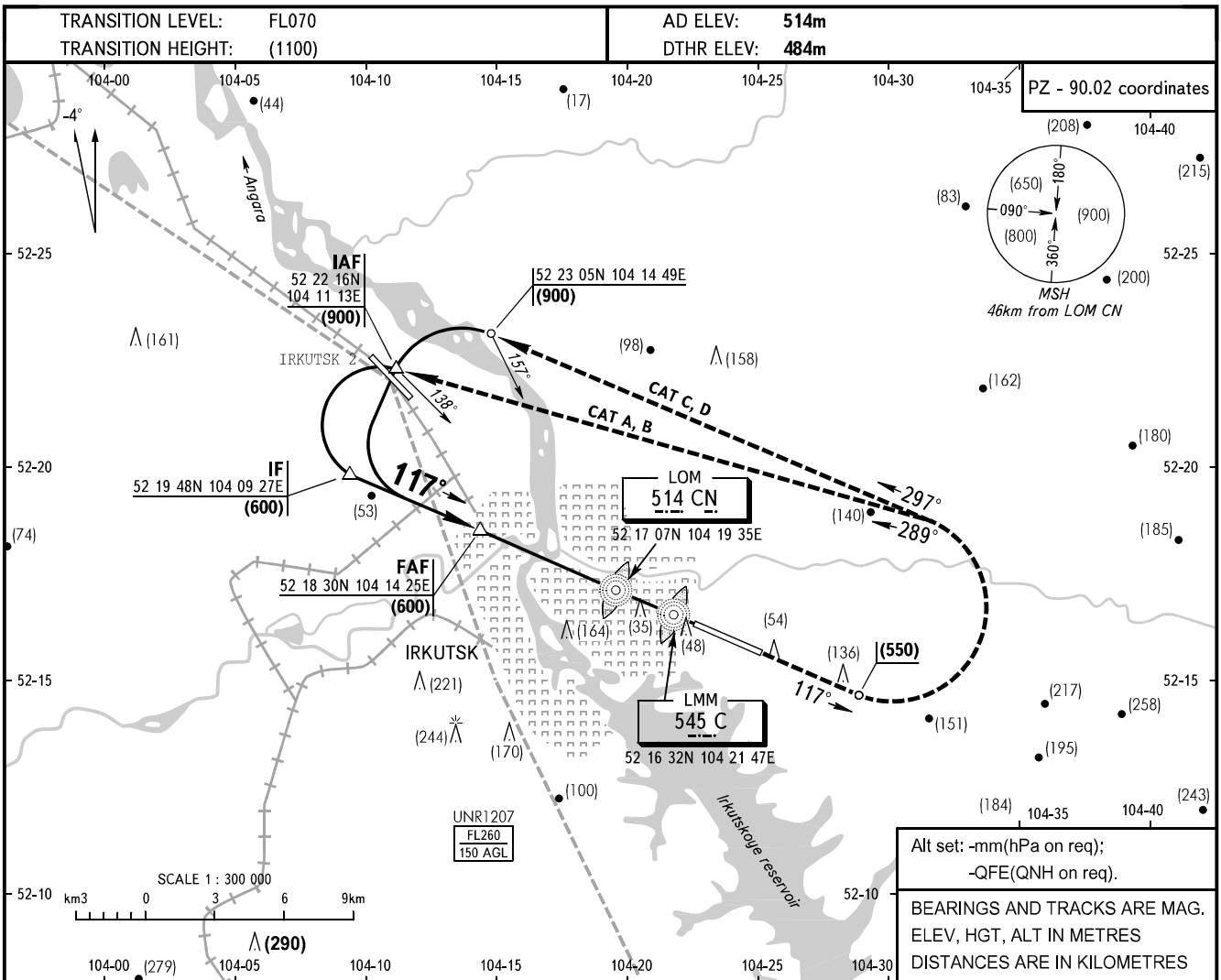


**INSTRUMENT
APPROACH
CHART - ICAO**

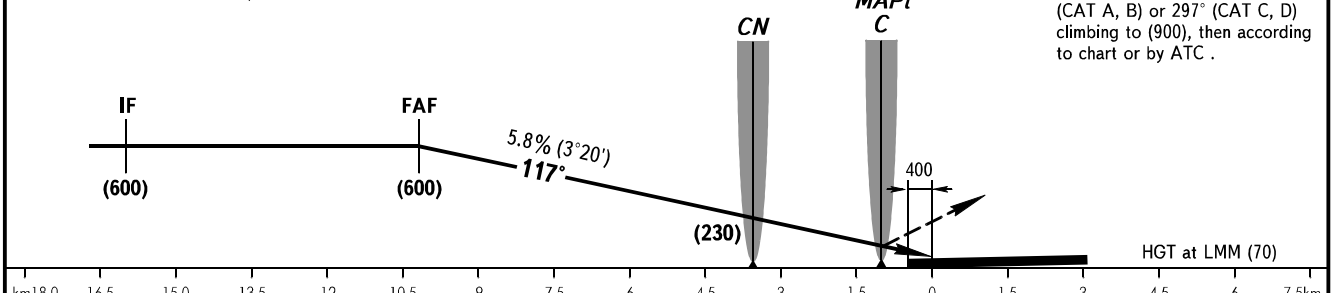
APPROACH	125.200
RADAR	119.300
TOWER	118.100

IRKUTSK, RUSSIA
IRKUTSK
NDB or 2 NDB RWY 12



FAF by TAR AZM 297° MAG, DIST 11.5
(Terminal area surveillance radar 52 15 44N 104 23 40E).

MISSED APPROACH
Climb straight ahead to (550), turn LEFT onto track 289° (CAT A, B) or 297° (CAT C, D) climbing to (900), then according to chart or by ATC.



		OCA/H	A/HEL	B	C	D	D-widebody						
Straight-in Approach	2 NDB	With FAF	610(126)	610(126)	610(126)	610(126)	610(126)						
		WO FAF	739(255)	739(255)	739(255)	739(255)	739(255)						
	NDB (LOM)	With FAF	613(129)	613(129)	613(129)	613(129)	613(129)						
		WO FAF	739(255)	739(255)	739(255)	739(255)	739(255)						
GROUND SPEED		km/h	150	180	210	240	270	300	330	360	390	420	450
RATE OF DESCENT		m/s	2.4	2.9	3.4	3.9	4.4	4.9	5.3	5.8	6.3	6.8	7.3