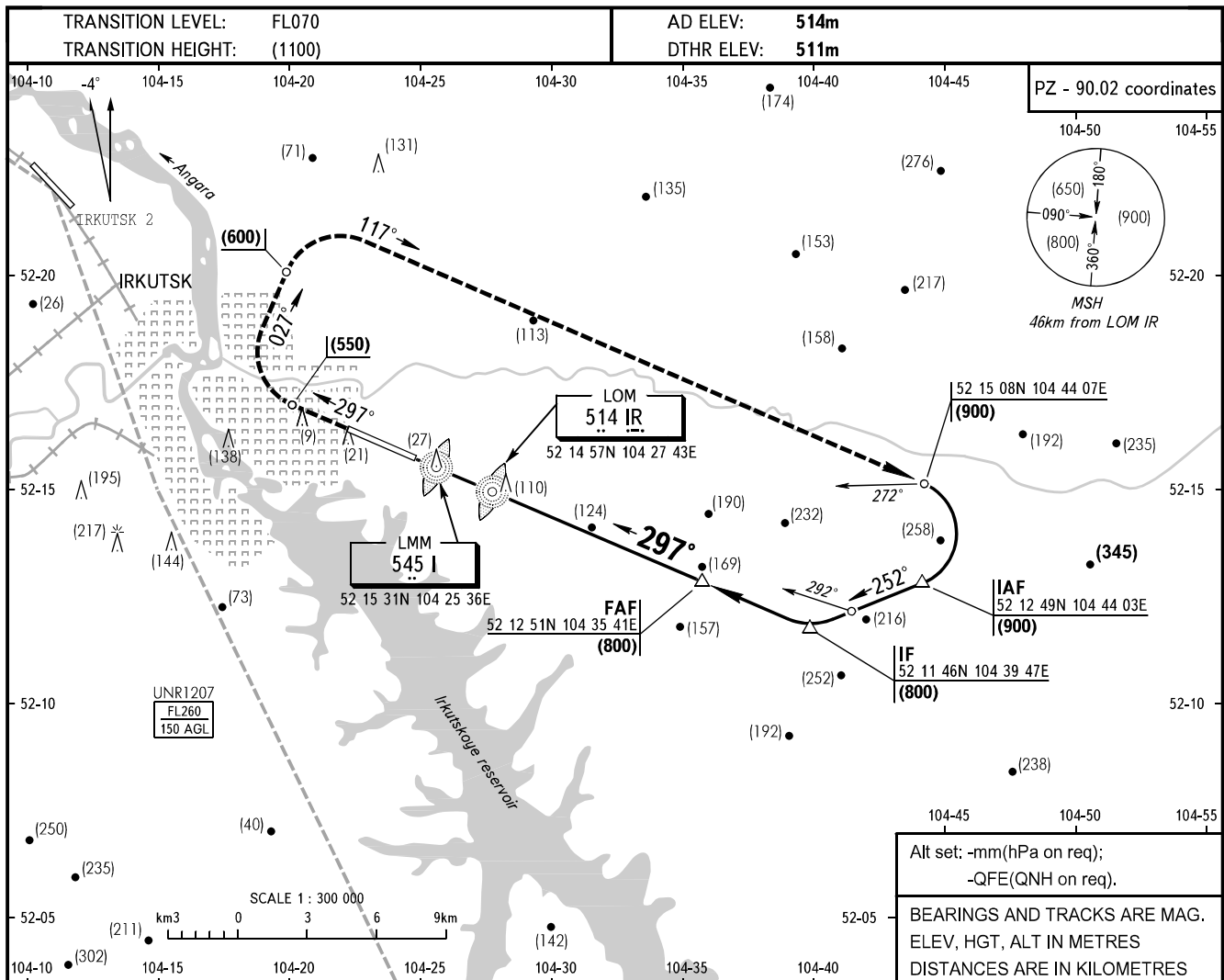


**INSTRUMENT  
APPROACH  
CHART - ICAO**

APPROACH	<b>125.200</b>
RADAR	<b>119.300</b>
TOWER	<b>118.100</b>

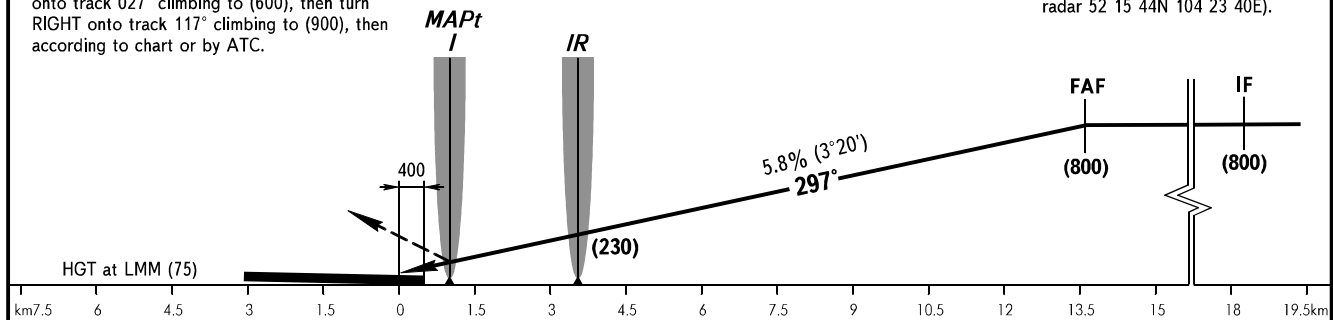
**IRKUTSK, RUSSIA**  
IRKUTSK  
**2 NDB or NDB RWY 30**



**MISSED APPROACH**

Climb straight ahead to (550), turn RIGHT onto track 027° climbing to (600), then turn RIGHT onto track 117° climbing to (900), then according to chart or by ATC.

FAF by TAR AZM 297°, DIST 11.5  
(Terminal area surveillance radar 52 15 44N 104 23 40E).



		OCA/H	A/HEL	B	C	D	D-widebody						
Straight-in Approach	2 NDB	With FAF	614(103)	614(103)	614(103)	614(103)							
		WO FAF	916(405)	916(405)	916(405)	916(405)							
	NDB (LOM)	With FAF	614(103)	614(103)	614(103)	614(103)							
		WO FAF	916(405)	916(405)	916(405)	916(405)							
GROUND SPEED		km/h	150	180	210	240	270	300	330	360	390	420	450
RATE OF DESCENT		m/s	2.4	2.9	3.4	3.9	4.4	4.9	5.3	5.8	6.3	6.8	7.3