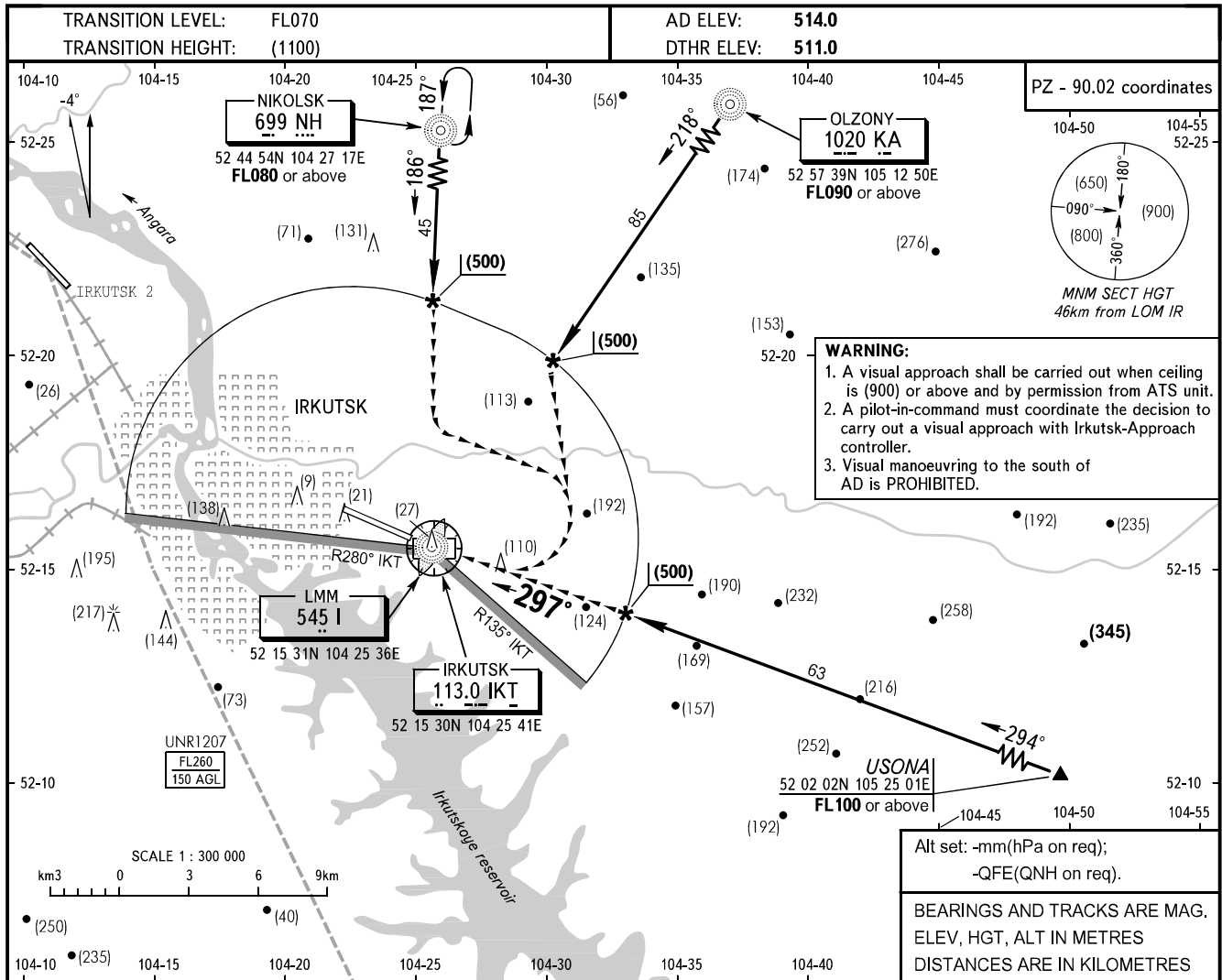


VISUAL
APPROACH
CHART - ICAO

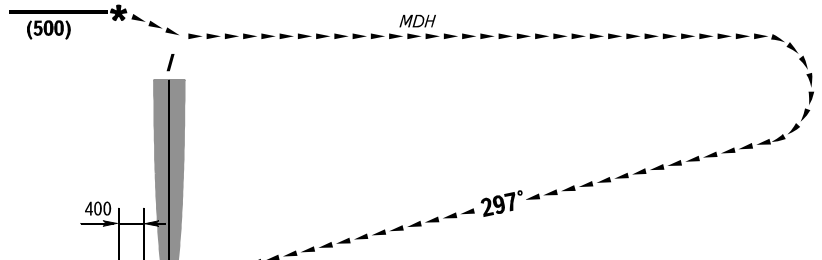
APPROACH	125.200
RADAR	119.300
TOWER	118.100

IRKUTSK, RUSSIA
IRKUTSK
CIRCLING RWY 30



MISSED APPROACH

Climb straight ahead to (550), turn RIGHT, climbing to (900), then according to IAC or by ATC instruction.



OCA/H		A	B	C	D
Visual Manoeuvring (Circling) Area	RWY 30	645(161)	712(228)	768(284)	774(290)
ACFT CAT		A	B	C	D
MET conditions	MDH, m	170	230	290	290
	Cloud base, m	900	900	900	900
	Visibility, m	2500	3000	6000	6000

NOTE: the radius of visual manoeuvring (circling) area for all ACFT categories: A, B, C, D - 9790m.