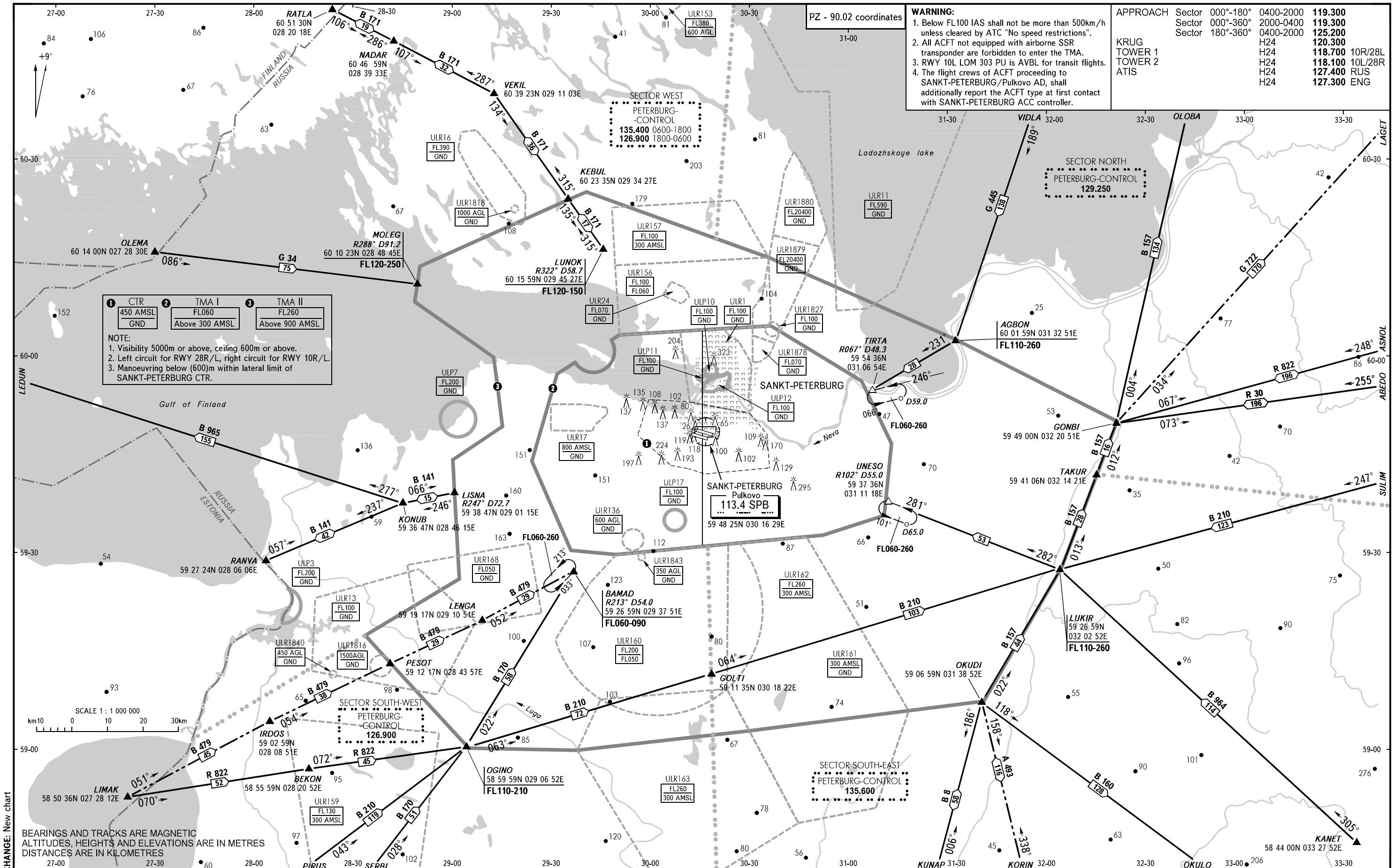


AREA CHART - ICAO

ARRIVAL, DEPARTURE
AND TRANSIT ROUTES

SANKT-PETERBURG, RUSSIA

TMA PULKOVO



WARNING:

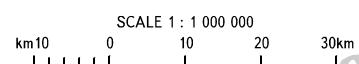
- Below FL100 IAS shall not be more than 500km/h unless cleared by ATC "No speed restrictions".
- All ACFT not equipped with airborne SSR transponder are forbidden to enter the TMA.
- RWY 10L LOM 303 PU is ABLV for transit flights.
- The flight crews of ACFT proceeding to SANKT-PETERBURG/Pulkovo AD, shall additionally report the ACFT type at first contact with SANKT-PETERBURG ACC controller.

APPROACH	Sector	000°-180°	0400-2000	119.300
	Sector 000°-360°	2000-0400		119.300
	Sector 180°-360°	0400-2000		125.200
KRUG TOWER 1		H24		120.300
TOWER 2		H24		118.700 10R/28L
ATIS		H24		118.100 10L/28R
		H24		127.400 RUS
		H24		127.300 ENG

1	CTR	2	TMA I	3	TMA II
	450 AMSL	FL060	FL260		
	GND	Above 300 AMSL	Above 900 AMSL		

NOTE:

- Visibility 5000m or above, ceiling 600m or above.
- Left circuit for RWY 28R/L, right circuit for RWY 10R/L.
- Manoeuvring below (600)m within lateral limit of SANKT-PETERBURG CTR.



BEARINGS AND TRACKS ARE MAGNETIC
ALTITUDES, HEIGHTS AND ELEVATIONS ARE IN METRES
DISTANCES ARE IN KILOMETRES