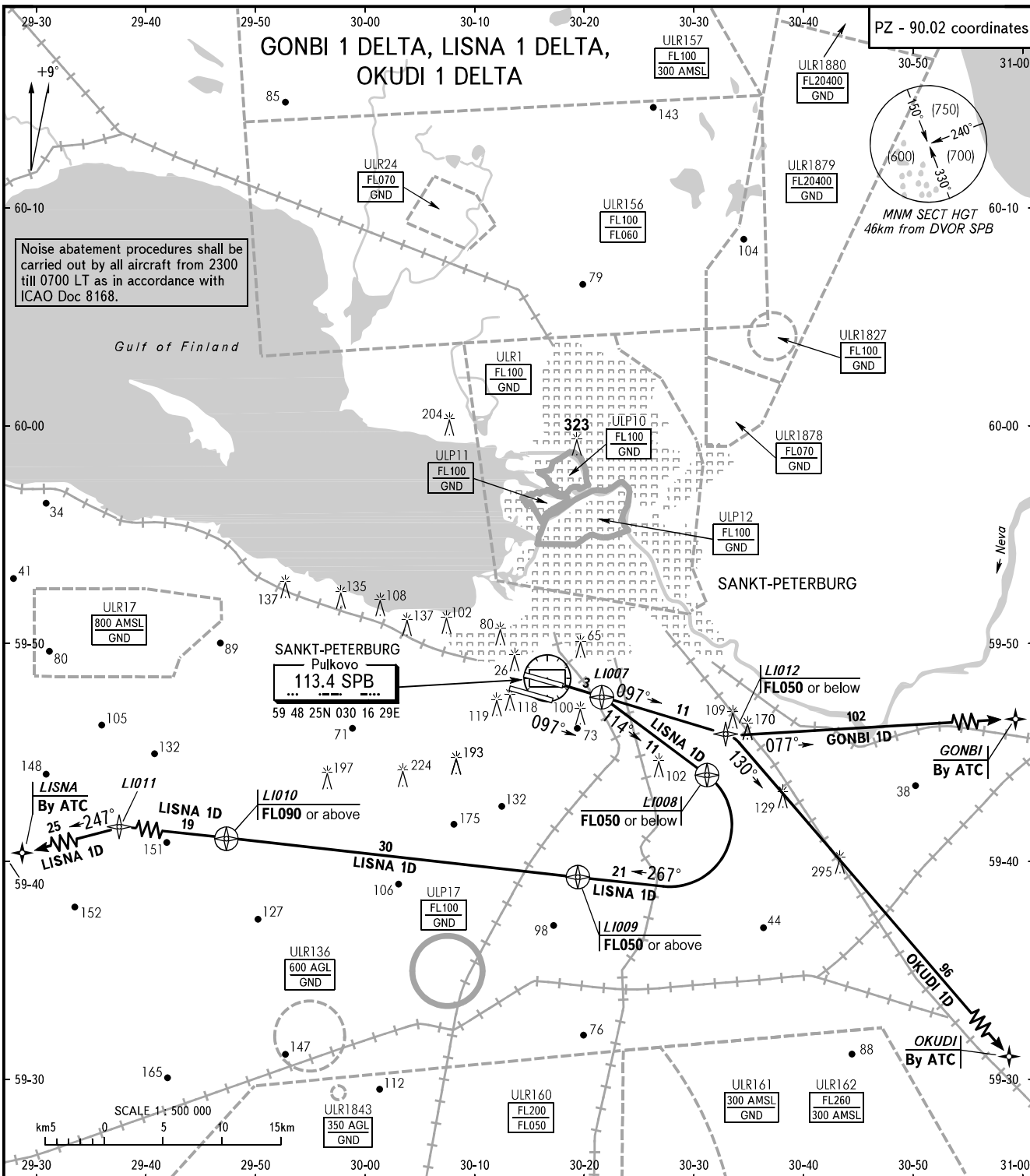


STANDARD DEPARTURE CHART
INSTRUMENT (SID) - ICAO

TRANSITION
HEIGHT : (900)

SANKT-PETERBURG, RUSSIA
PULKOVO
RNAV GNSS RWY 10L



TOWER 2			118.100
KRUG			120.300
APPROACH	Sector 000°-180°	0400-2000	119.300
	Sector 180°-360°	0400-2000	125.200
	Sector 000°-360°	2000-0400	119.300

- WARNING:**
1. When crossing (200) contact Pulkovo-Krug on 120.300.
 2. The initially cleared height of climb after take-off is (900).
 3. The minimum climb gradient to LI009 to FL050 is not less than 4.2%. If unable to maintain the mentioned climb gradient, the crew shall advise ATS unit about it during engines start-up and get other instructions.
 4. SID RNAV GNSS shall be applied to ACFIT having certified equipment by flight crews having appropriate approval.
 5. If following SID is not possible, the crew shall report to Ground Controller and request vectoring for departure.

BEARINGS AND TRACKS ARE MAGNETIC
ALTITUDES, HEIGHTS AND ELEVATIONS ARE IN METRES
DISTANCES ARE IN KILOMETRES

CHANGE: Areas