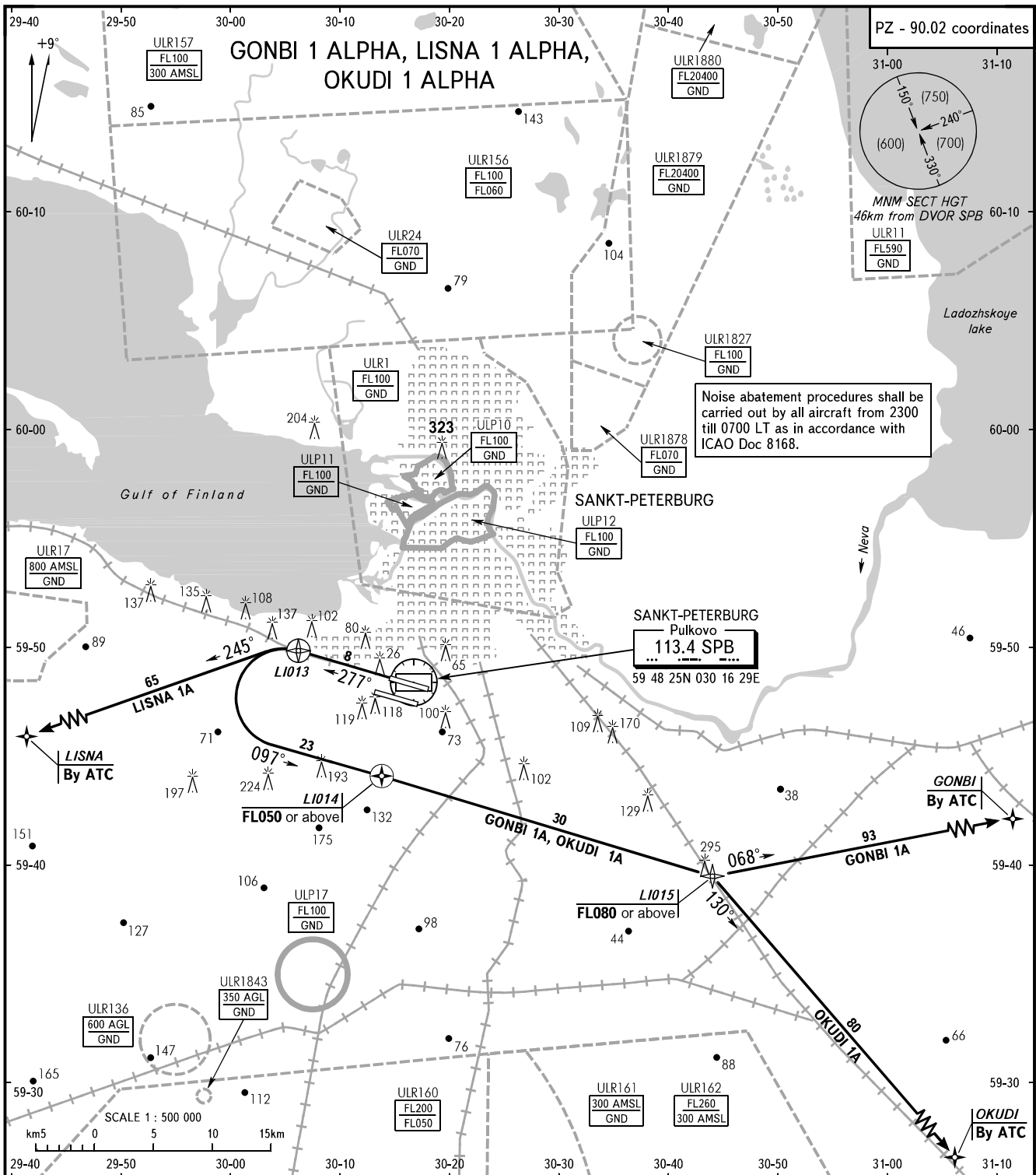


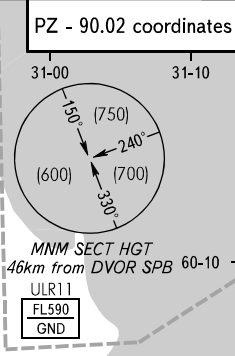
STANDARD DEPARTURE CHART
INSTRUMENT (SID) - ICAO

TRANSITION
HEIGHT : (900)

SANKT-PETERBURG, RUSSIA
PULKOVO
RNAV GNSS RWY 28R



Noise abatement procedures shall be carried out by all aircraft from 2300 till 0700 LT as in accordance with ICAO Doc 8168.



TOWER 2		118.100
KRUG		120.300
APPROACH	Sector 000°-180°	0400-2000 119.300
	Sector 180°-360°	0400-2000 125.200
	Sector 000°-360°	2000-0400 119.300

- WARNING:**
1. When crossing (200) contact Pulkovo-Krug on 120.300.
 2. The initially cleared height of climb after take-off is (900).
 3. The minimum climb gradient to LI014 to FL050 is not less than 4.8%. If unable to maintain the mentioned climb gradient, the crew shall advise ATS unit about it during engines start-up and get other instructions.
 4. SID RNAV GNSS shall be applied for ACFT having certified equipment by flight crews having appropriate approval.
 5. If following SID is not possible, the crew shall report to Ground Controller and request vectoring for departure.

BEARINGS AND TRACKS ARE MAGNETIC
ALTITUDES, HEIGHTS AND ELEVATIONS ARE IN METRES
DISTANCES ARE IN KILOMETRES

CHANGE: Areas