

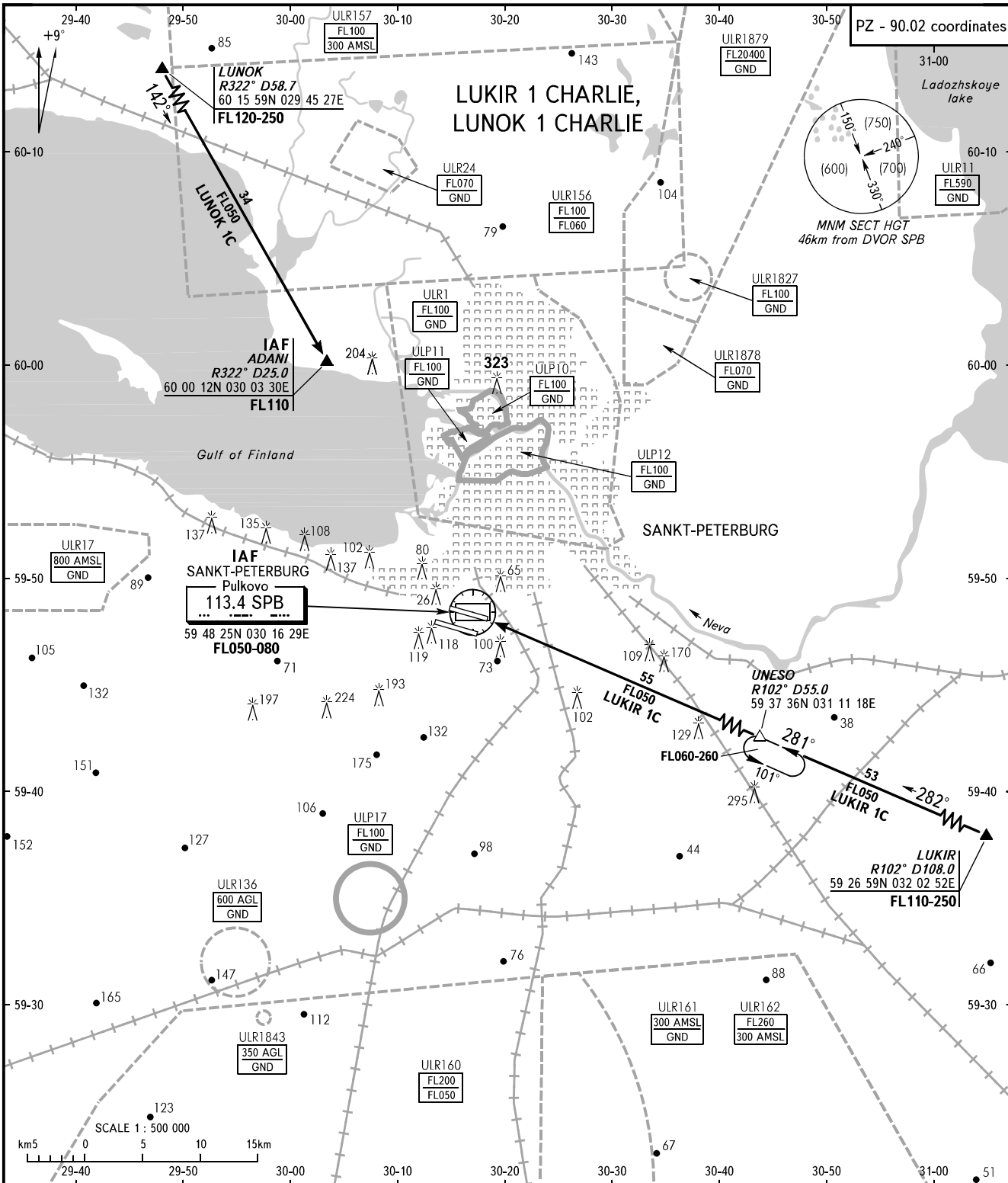
STANDARD ARRIVAL CHART
INSTRUMENT (STAR) - ICAO

SANKT-PETERBURG, RUSSIA

PULKOVO

RWY 10L, 10R

TRANSITION
LEVEL : **1**



APPROACH	Sector 000°-180°	0400-2000	119.300
	Sector 180°-360°	0400-2000	125.200
	Sector 000°-360°	2000-0400	119.300
KRUG	TOWER 2	RWY 10L	120.300
	TOWER 1	RWY 10R	118.100
			118.700

- 1** TRANSITION LEVEL:
- FL050 when QFE is 733mm mercury column or above;
 - FL060 when QFE is less than 733mm mercury column and is 706mm mercury column or above;
 - FL070 when QFE is less than 706mm mercury column.

WARNING
If following STAR and/or approach procedure is not possible, the crew shall request vectoring for approach.

BEARINGS AND TRACKS ARE MAGNETIC
ALTITUDES, HEIGHTS AND ELEVATIONS ARE IN METRES
DISTANCES ARE IN KILOMETRES

CHANGE: RADIAL UNES0