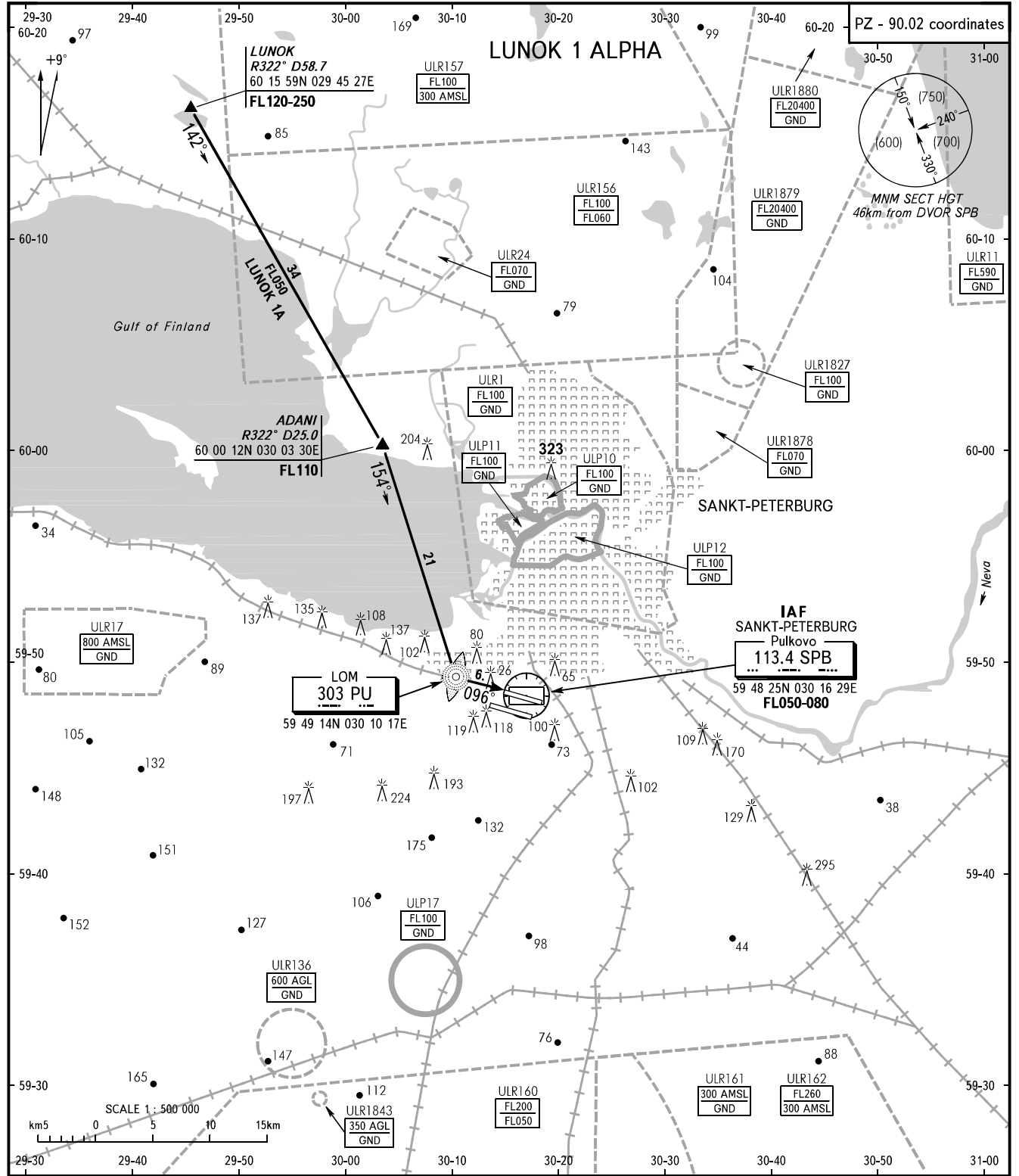


STANDARD ARRIVAL CHART
INSTRUMENT (STAR) - ICAO

SANKT-PETERBURG, RUSSIA
PULKOVO
RWY 28L, 28R

TRANSITION
LEVEL: **1**



APPROACH	Sector 000°-180°	0400-2000	119.300
	Sector 180°-360°	0400-2000	125.200
	Sector 000°-360°	2000-0400	119.300
KRUG			120.300
TOWER 2	RWY 28R		118.100
TOWER 1	RWY 28L		118.700

1 TRANSITION LEVEL:
 - FL050 when QFE is 733mm mercury column or above;
 - FL060 when QFE is less than 733mm mercury column and is 706mm mercury column or above;
 - FL070 when QFE is less than 706mm mercury column.

WARNING
 If following STAR and/or approach procedure is not possible, the crew shall request vectoring for approach.

BEARINGS AND TRACKS ARE MAGNETIC
 ALTITUDES, HEIGHTS AND ELEVATIONS ARE IN METRES
 DISTANCES ARE IN KILOMETRES

CHANGE: COORD