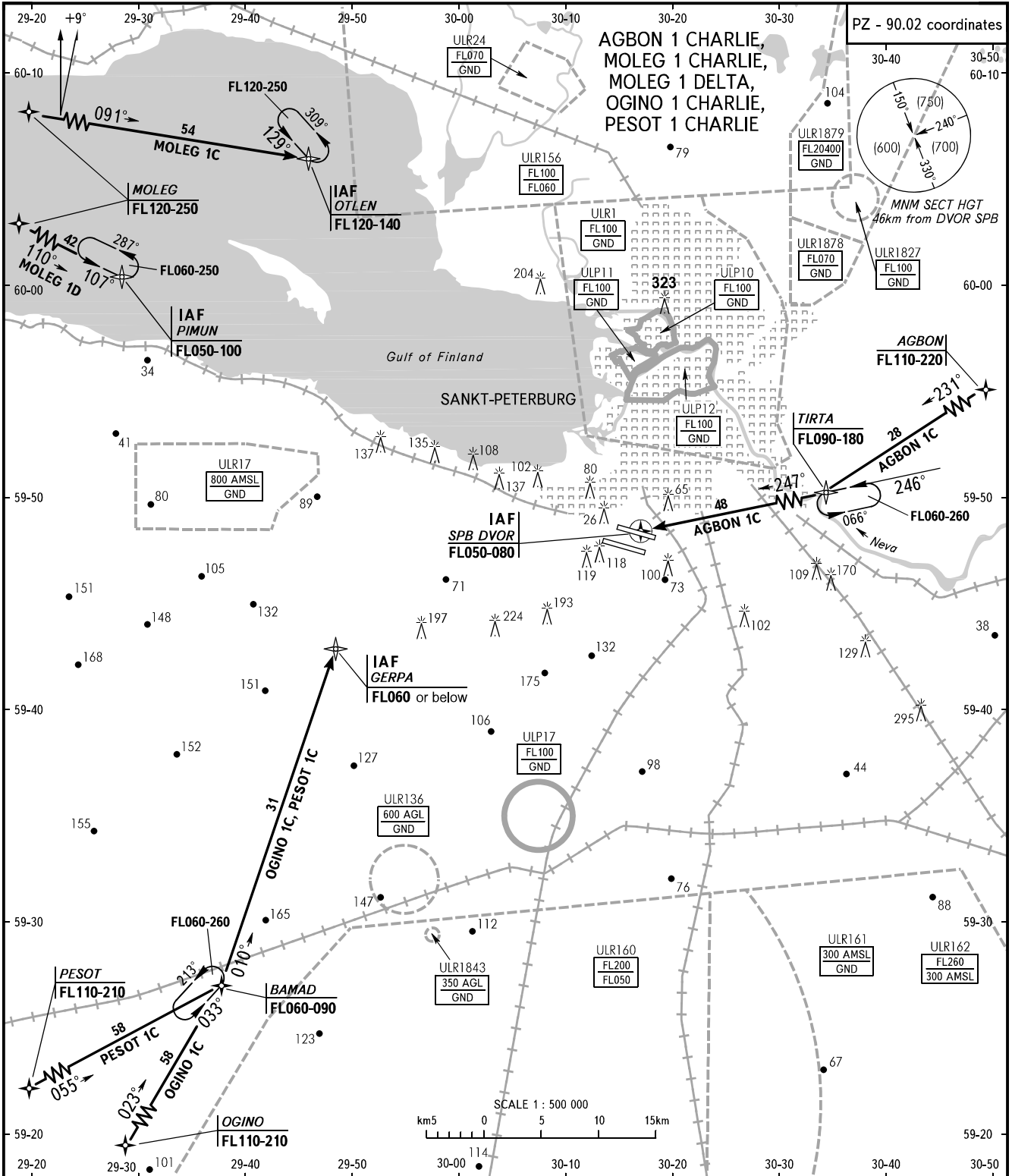


STANDARD ARRIVAL CHART  
INSTRUMENT (STAR) - ICAO

SANKT-PETERBURG, RUSSIA  
PULKOVO  
RNAV GNSS RWY 10L, 10R

TRANSITION  
LEVEL : **1**



|          |                  |           |                |
|----------|------------------|-----------|----------------|
| APPROACH | Sector 000°-180° | 0400-2000 | <b>119.300</b> |
|          | Sector 180°-360° | 0400-2000 | <b>125.200</b> |
|          | Sector 000°-360° | 2000-0400 | <b>119.300</b> |
| KRUG     | TOWER 2          | RWY 10L   | <b>120.300</b> |
|          | TOWER 1          | RWY 10R   | <b>118.100</b> |
|          |                  |           | <b>118.700</b> |

- 1** TRANSITION LEVEL:
- FL050 when QFE is 733mm mercury column or above;
  - FL060 when QFE is less than 733mm mercury column and is 706mm mercury column or above;
  - FL070 when QFE is less than 706mm mercury column.

**WARNING**

1. STAR RNAV GNSS shall be applied for ACFT having certified equipment by flight crews having appropriate approval. If following STAR RNAV GNSS and/or approach procedure is not possible, the crew shall request vectoring for approach.
2. When MOLEG 1D is used ACFT will be vectored from IAF to final approach.

BEARINGS AND TRACKS ARE MAGNETIC  
ALTITUDES, HEIGHTS AND ELEVATIONS ARE IN METRES  
DISTANCES ARE IN KILOMETRES

CHANGE: New chart