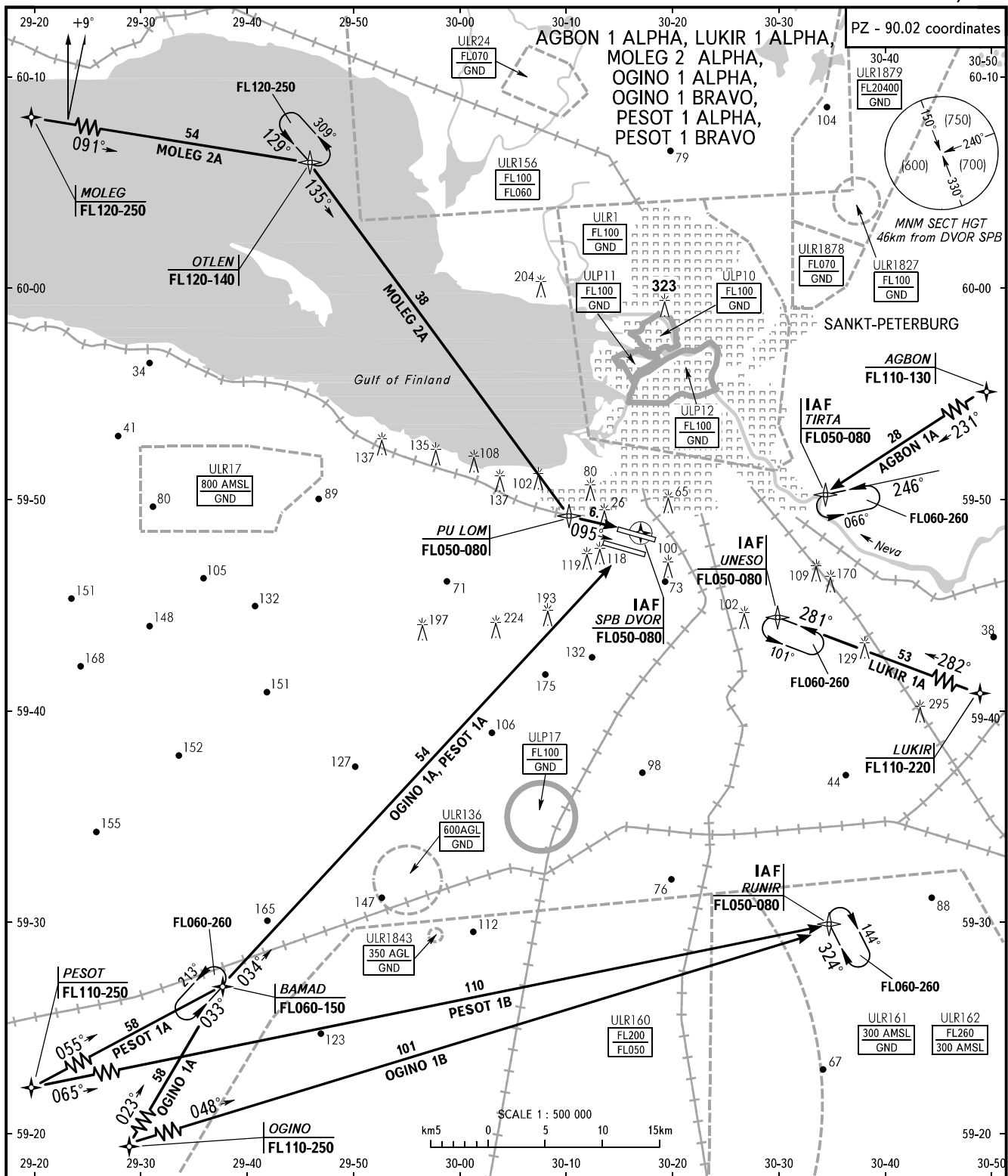


STANDARD ARRIVAL CHART
INSTRUMENT (STAR) - ICAO

SANKT-PETERBURG, RUSSIA
PULKOVO
RNAV GNSS RWY 28L, 28R

TRANSITION
LEVEL : **1**



APPROACH	Sector 000°-180°	0400-2000	119.300
	Sector 180°-360°	0400-2000	125.200
	Sector 000°-360°	2000-0400	119.300
KRUG			120.300
TOWER 2	RWY 28R		118.100
TOWER 1	RWY 28L		118.700

- 1** TRANSITION LEVEL:
- FL050 when QFE is 733mm mercury column or above;
 - FL060 when QFE is less than 733mm mercury column and is 706mm mercury column or above;
 - FL070 when QFE is less than 706mm mercury column.

WARNING
STAR RNAV GNSS shall be applied for ACFT having certified equipment by flight crews having appropriate approval. If following STAR RNAV GNSS and/or approach procedure is not possible, the crew shall request vectoring for approach.

BEARINGS AND TRACKS ARE MAGNETIC
ALTITUDES, HEIGHTS AND ELEVATIONS ARE IN METRES
DISTANCES ARE IN KILOMETRES

CHANGE: New chart