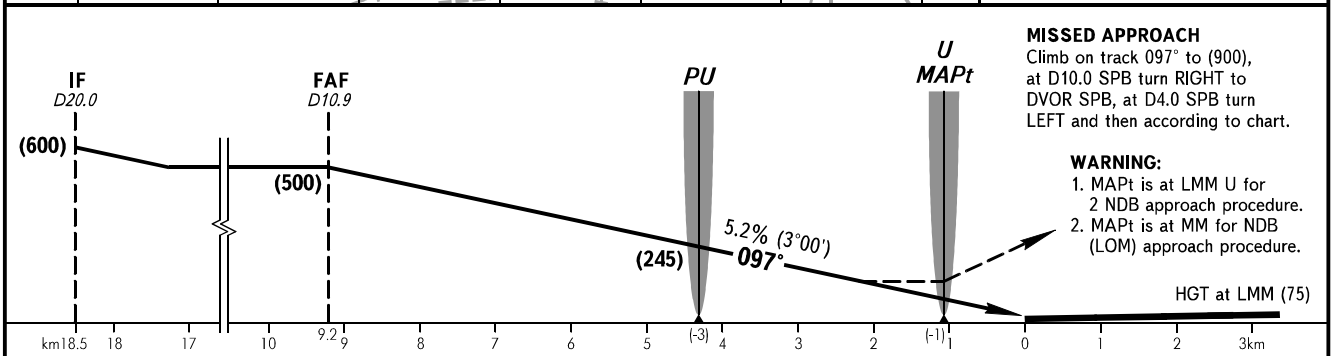
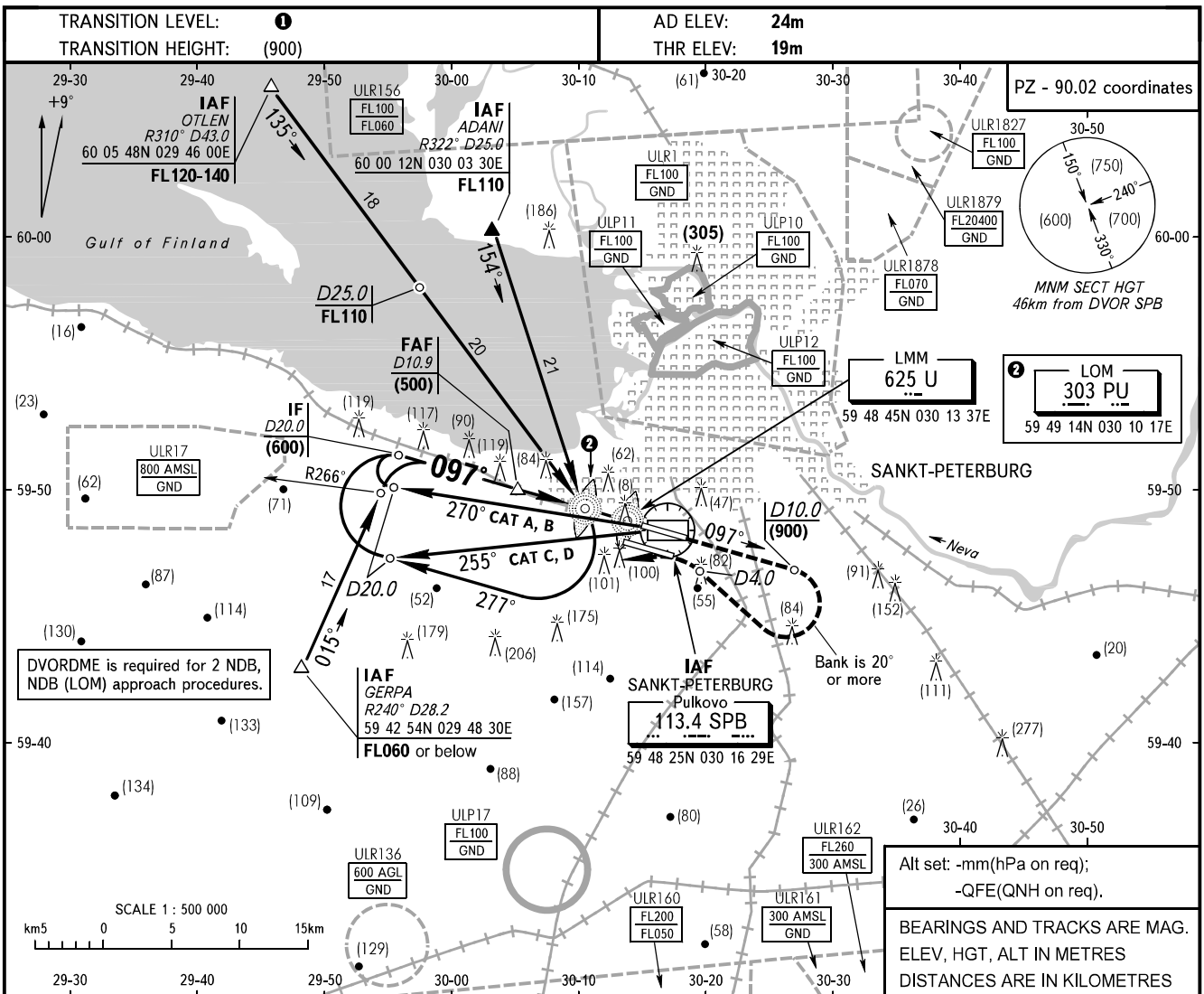


**INSTRUMENT
APPROACH
CHART - ICAO**

APPROACH	Sector 000°-180° 0400-2000	119.300
	Sector 180°-360° 0400-2000	125.200
	Sector 000°-360° 2000-0400	119.300
	KRUG TOWER 2	120.300 118.100

SANKT-PETERBURG, RUSSIA
PULKOVO
2 NDB, NDB (LOM) RWY 10L



OCA/H		A	B	C	D							
Straight-in	2 NDB with FAF	131(112)	131(112)	131(112)	131(112)							
	NDB (LOM) with FAF	149(130)	149(130)	149(130)	149(130)							
Approach												
GROUND SPEED	km/h	150	180	210	240	270	300	330	360	390	420	450
LOM-LMM 3250m	min:sec	1.18	1.05	0.56	0.49	0.43	0.39	0.35	0.33	0.30	0.28	0.26
RATE OF DESCENT	m/s	2.2	2.6	3.1	3.5	3.9	4.4	4.8	5.2	5.7	6.1	6.6

① **TRANSITION LEVEL:**
- FL050 when QFE is 733mm mercury column or above;
- FL060 when QFE is less than 733mm mercury column and is 706mm mercury column or above;
- FL070 when QFE is less than 706mm mercury column.

CHANGE: New chart