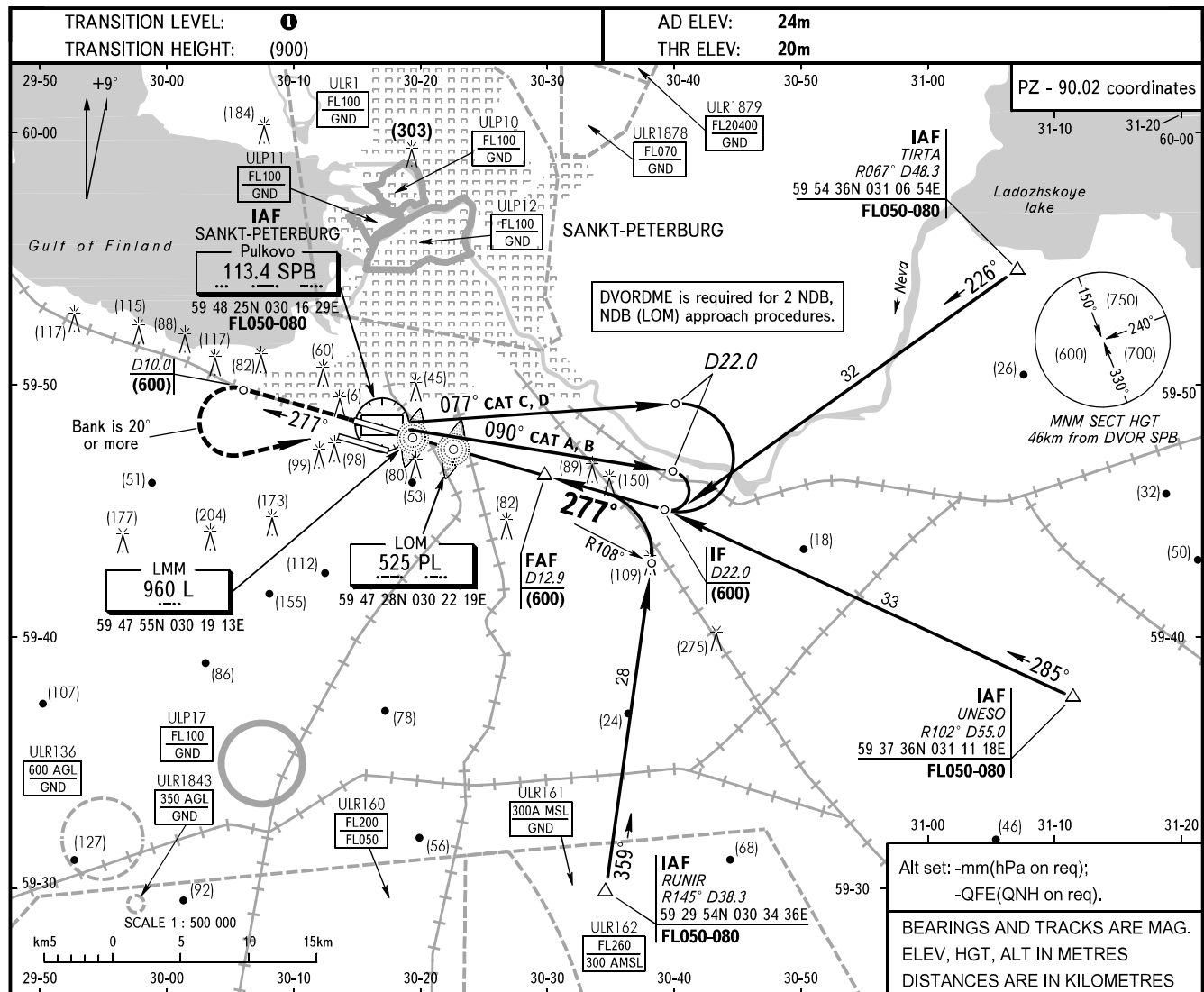


**INSTRUMENT  
APPROACH  
CHART - ICAO**

APPROACH	Sector 000°-180° 0400-2000	<b>119.300</b>
	Sector 180°-360° 0400-2000	<b>125.200</b>
	Sector 000°-360° 2000-0400	<b>119.300</b>
	KRUG TOWER 2	<b>120.300</b> <b>118.100</b>

**SANKT-PETERBURG, RUSSIA**  
**PULKOVO**  
**2 NDB, NDB (LOM) RWY 28R**



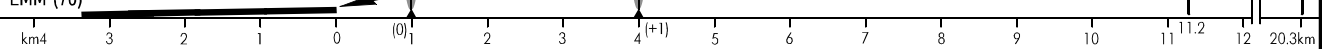
**MISSED APPROACH**

Climb on track 277° to (600), at D10.0 SPB turn LEFT to DVOR SPB, climbing to (900), then according to chart.

**WARNING:**

- MAPt is at LMM L for 2 NDB approach procedure.
- MAPt is at MM for NDB (LOM) approach procedure.

HGT at LMM (70)



OCA/H		A	B	C	D	① TRANSITION LEVEL:							
Straight-in	2 NDB with FAF	146(125)	146(125)	146(125)	146(125)	- FL050 when QFE is 733mm mercury column or above;							
	NDB (LOM) with FAF	186(165)	186(165)	186(165)	186(165)	- FL060 when QFE is less than 733mm mercury column and is 706mm mercury column or above;							
Approach						- FL070 when QFE is less than 706mm mercury column.							
GROUND SPEED		km/h	150	180	210	240	270	300	330	360	390	420	450
LOM-LMM 3030m		min:sec	1.13	1.01	0.52	0.45	0.40	0.36	0.33	0.30	0.28	0.26	0.24
RATE OF DESCENT		m/s	2.2	2.6	3.1	3.5	3.9	4.4	4.8	5.2	5.7	6.1	6.6