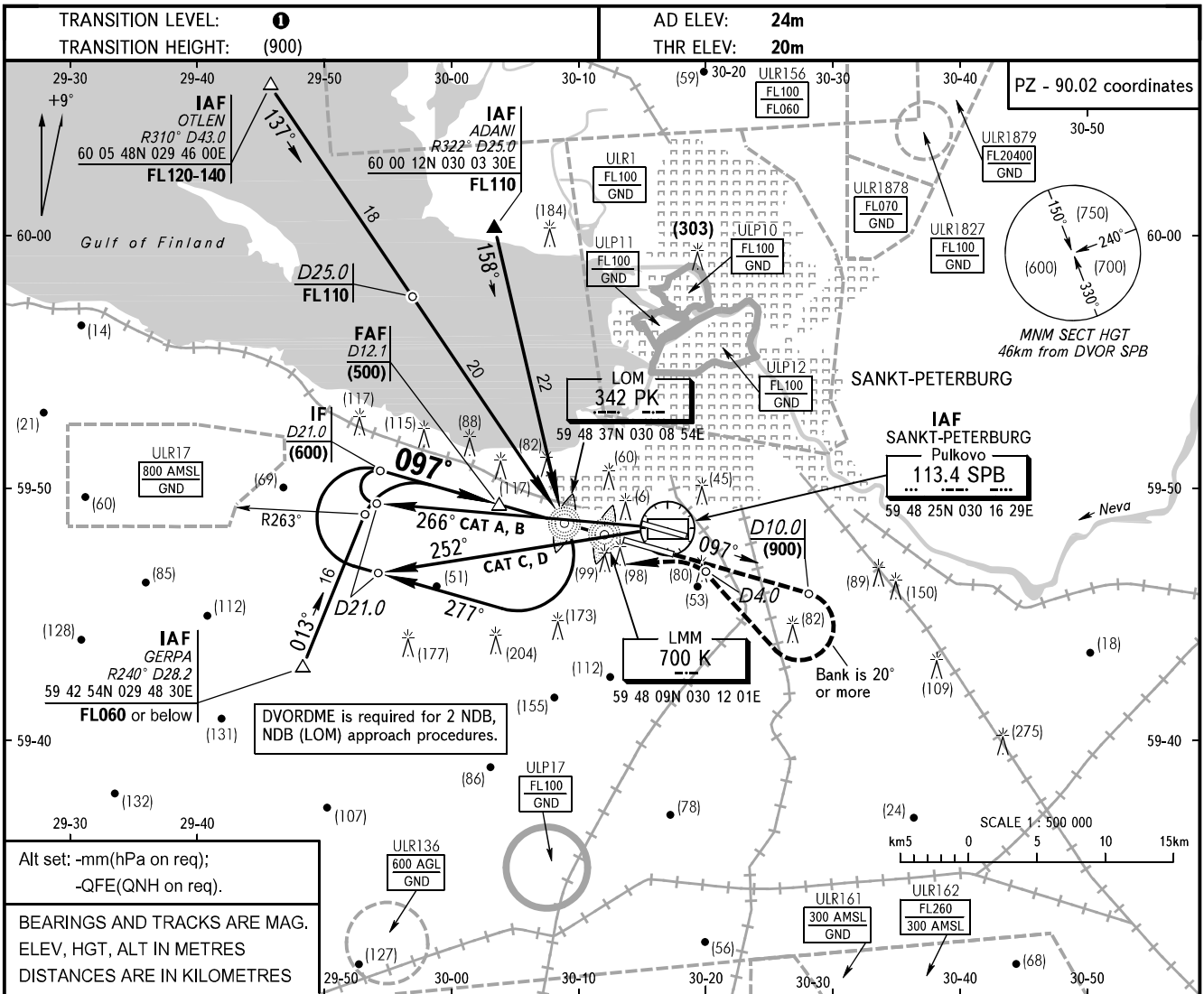


**INSTRUMENT
APPROACH
CHART - ICAO**

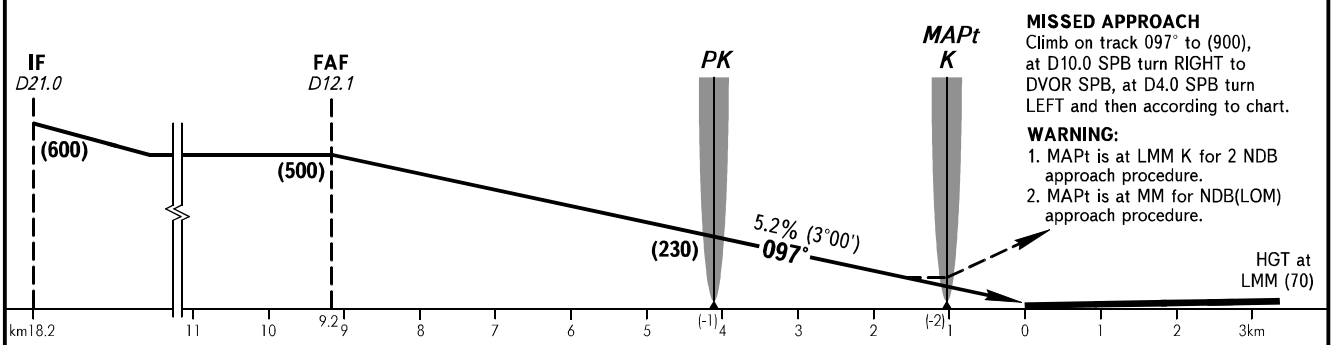
APPROACH KRUG TOWER 1	Sector 000°-180° 0400-2000	119.300
	Sector 180°-360° 0400-2000	125.200
	Sector 000°-360° 2000-0400	119.300
		120.300
		118.700

SANKT-PETERBURG, RUSSIA
PULKOVO
2 NDB, NDB (LOM) RWY 10R



All set: -mm(hPa on req);
-QFE(QNH on req).

BEARINGS AND TRACKS ARE MAG.
ELEV, HGT, ALT IN METRES
DISTANCES ARE IN KILOMETRES



MISSED APPROACH
Climb on track 097° to (900),
at D10.0 SPB turn RIGHT to
DVOR SPB, at D4.0 SPB turn
LEFT and then according to chart.

WARNING:
1. MAPt is at LMM K for 2 NDB
approach procedure.
2. MAPt is at MM for NDB(LOM)
approach procedure.

OCA/H		A	B	C	D
Straight-in	2 NDB with FAF	139(118)	139(118)	139(118)	139(118)
	NDB (LOM) with FAF	194(173)	194(173)	194(173)	194(173)
Approach					

1 TRANSITION LEVEL:
- FL050 when QFE is 733mm mercury column or above;
- FL060 when QFE is less than 733mm mercury column
and is 706mm mercury column or above;
- FL070 when QFE is less than 706mm mercury column.

GROUND SPEED	km/h	150	180	210	240	270	300	330	360	390	420	450
LOM-LMM 3050m	min:sec	1.13	1.01	0.52	0.46	0.41	0.37	0.33	0.31	0.28	0.26	0.24
RATE OF DESCENT	m/s	2.2	2.6	3.1	3.5	3.9	4.4	4.8	5.2	5.7	6.1	6.6