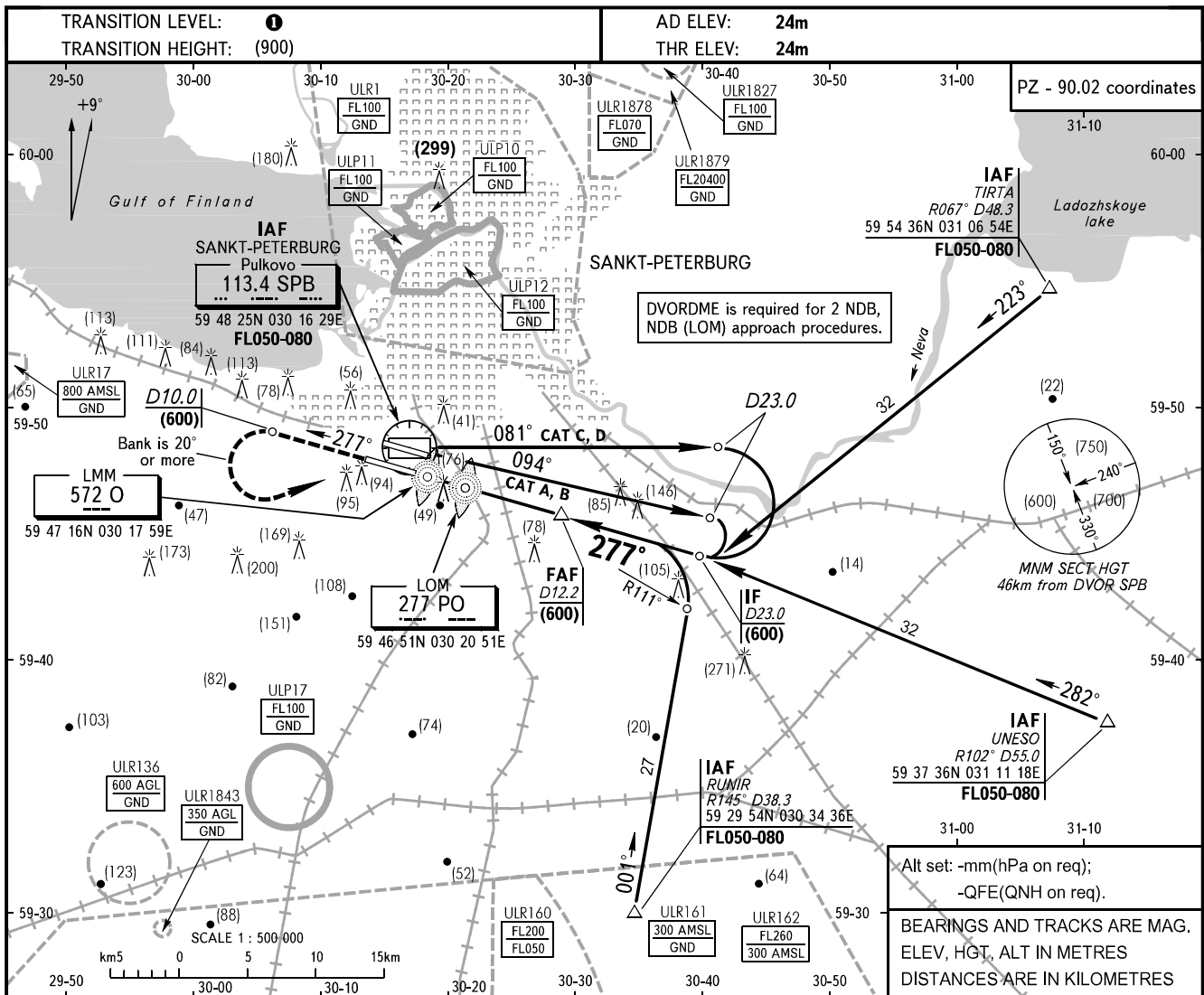


**INSTRUMENT
APPROACH
CHART - ICAO**

APPROACH	Sector 000°-180°	0400-2000	119.300
	Sector 180°-360°	0400-2000	125.200
	Sector 000°-360°	2000-0400	119.300
KRUG			120.300
TOWER 1			118.700

SANKT-PETERBURG, RUSSIA
PULKOVO
2 NDB, NDB (LOM) RWY 28L

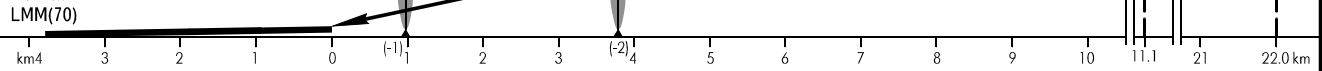


Climb on track 277° to (600), at D10.0 SPB turn LEFT to DVOR SPB, climbing to (900), then according to chart.

WARNING:

1. MAPt is at LMM O for 2 NDB approach procedure.
2. MAPt is at MM for NDB (LOM) approach procedure.

HGT at LMM(70)



		OCA/H	A	B	C	D							
Straight-in	2 NDB with FAF		155(130)	155(130)	155(130)	155(130)							
	NDB (LOM) with FAF		179(154)	179(154)	179(154)	179(154)							
Approach													
GROUND SPEED		km/h	150	180	210	240	270	300	330	360	390	420	450
LOM-LMM 2800m		min:sec	1.07	0.56	0.48	0.42	0.37	0.34	0.31	0.28	0.26	0.24	0.22
RATE OF DESCENT		m/s	2.2	2.6	3.1	3.5	3.9	4.4	4.8	5.2	5.7	6.1	6.6

TRANSITION LEVEL:

- FL050 when QFE is 733mm mercury column or above;
- FL060 when QFE is less than 733mm mercury column and is 706mm mercury column or above;
- FL070 when QFE is less than 706mm mercury column.