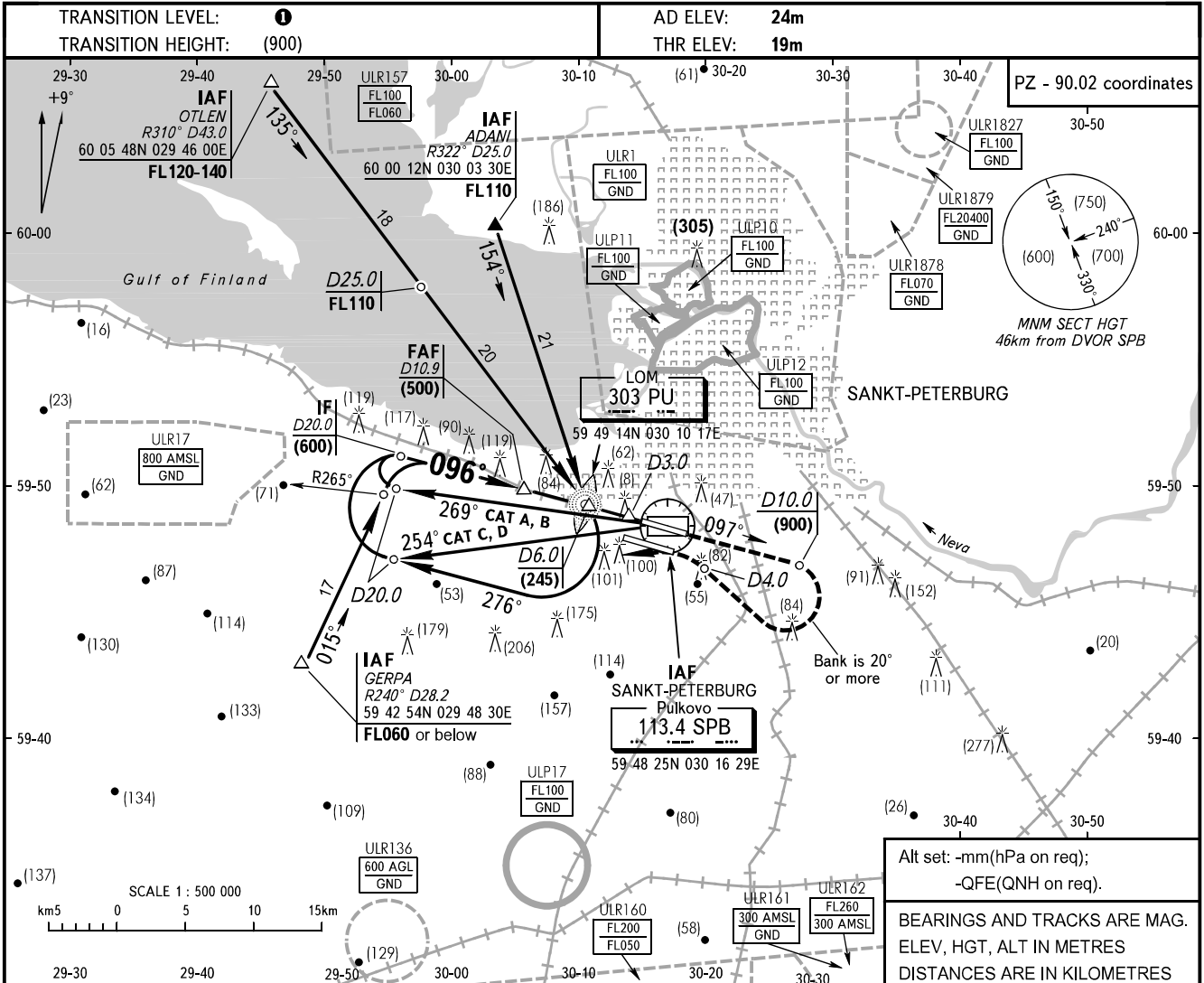


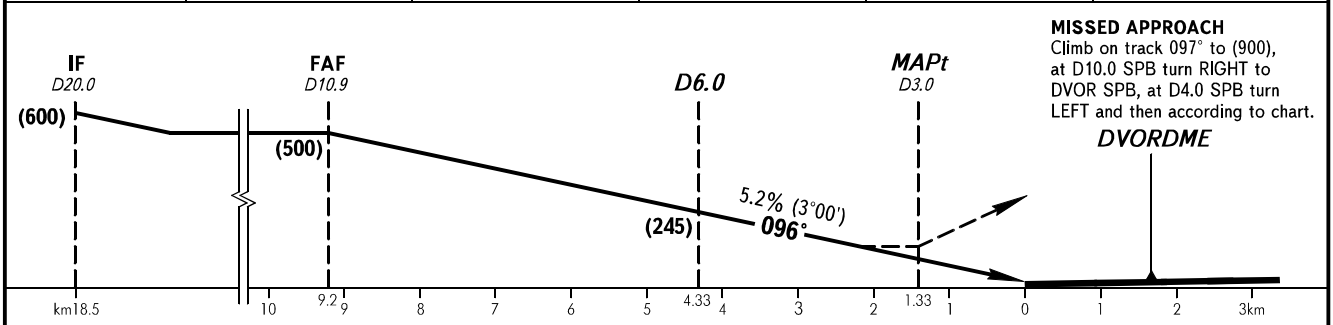
**INSTRUMENT
APPROACH
CHART - ICAO**

APPROACH	Sector 000°-180° 0400-2000	119.300
	Sector 180°-360° 0400-2000	125.200
	Sector 000°-360° 2000-0400	119.300
	KRUG TOWER 2	120.300 118.100

SANKT-PETERBURG, RUSSIA
PULKOVO
DVORDME RWY 10L



DME SPB	10.0	8.0	6.0	4.0	2.0
HAT	(455)	(350)	(245)	(145)	(40)



OCA/H		A	B	C	D
Straight-in	DVORDME	179(160)	179(160)	179(160)	179(160)
	Approach				

1 TRANSITION LEVEL:
- FL050 when QFE is 733mm mercury column or above;
- FL060 when QFE is less than 733mm mercury column and is 706mm mercury column or above;
- FL070 when QFE is less than 706mm mercury column.

WARNING
Final approach track is displaced by 1° from RCL.

GROUND SPEED	km/h	150	180	210	240	270	300	330	360	390	420	450
RATE OF DESCENT	m/s	2.2	2.6	3.1	3.5	3.9	4.4	4.8	5.2	5.7	6.1	6.6

CHANGE: New chart