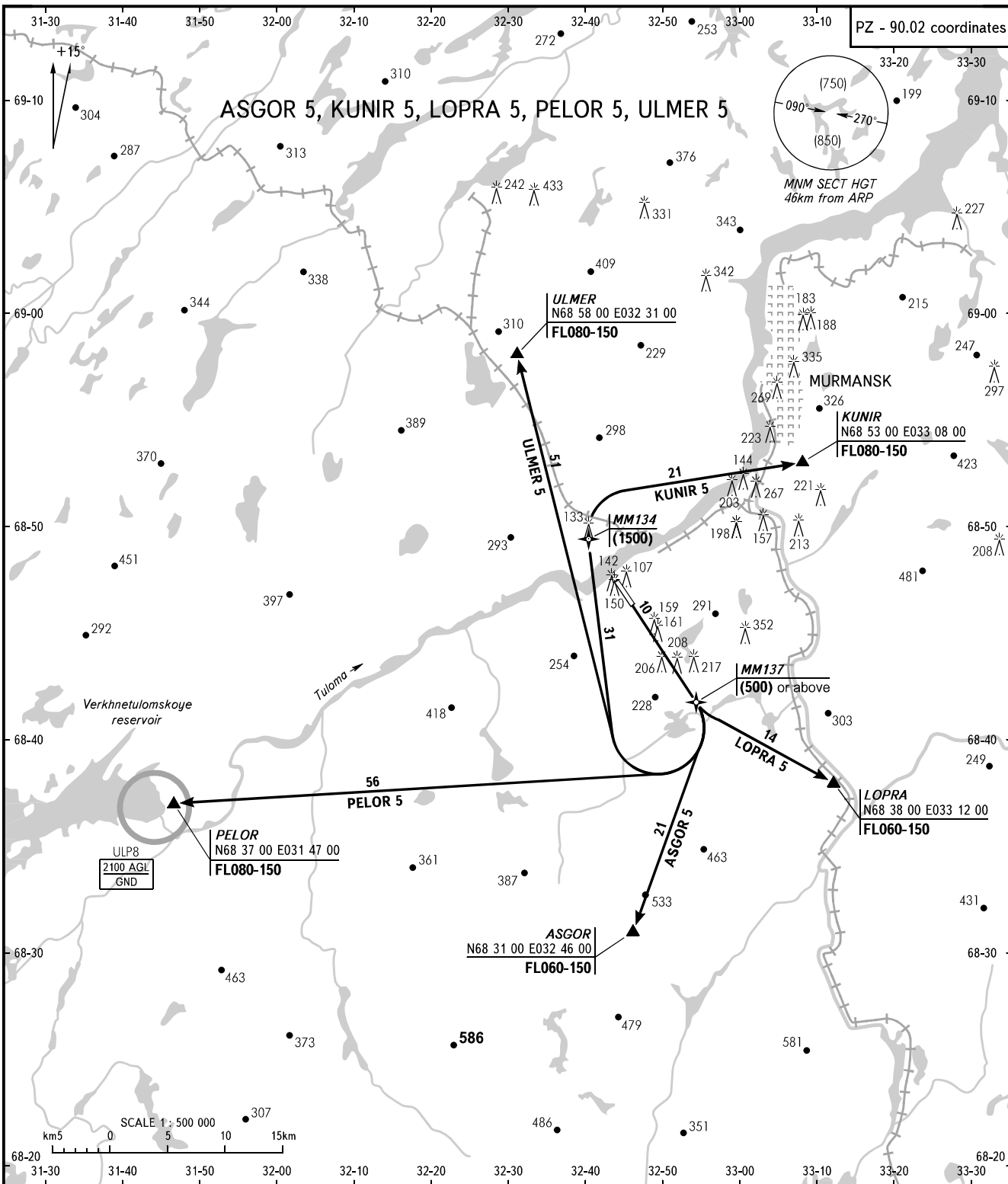


STANDARD DEPARTURE CHART
INSTRUMENT (SID) - ICAO

TRANSITION
HEIGHT: (900)

MURMANSK, RUSSIA
MURMANSK
GNSS RWY 13



TOWER CONTROL 120.3
132.1

WARNING:

1. After take-off climb to (120) with gradient of 4.9% or more for all ACFT CAT, further climbing according to the Aeroplane Flight Manual.
2. If unable to reach the flight level assigned for the departure corridor ACFT shall climb according to the established rectangular traffic pattern by ATC controller's instruction.

BEARINGS AND TRACKS ARE MAGNETIC
ALTITUDES, HEIGHTS AND ELEVATIONS ARE IN METRES
DISTANCES ARE IN KILOMETRES