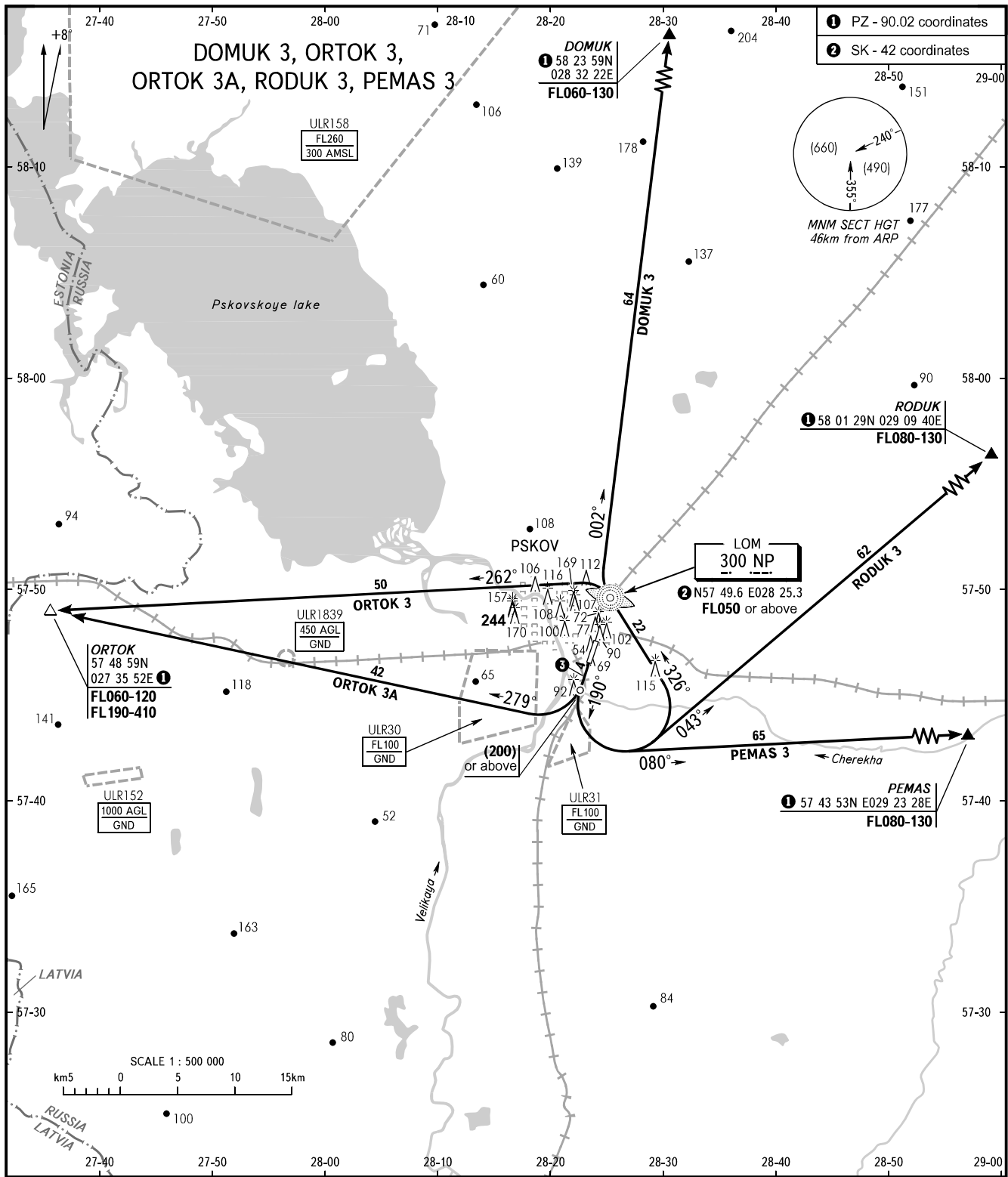


STANDARD DEPARTURE CHART
INSTRUMENT (SID) - ICAO

PSKOV, RUSSIA
PSKOV
RWY 19

TRANSITION
HEIGHT : (1000)



TOWER 122.000

3 MNM climb gradient is 5.0%.

WARNING
SID DOMUK 3, ORTOK 3: The climb gradient is 6.9% to LOM.

BEARINGS AND TRACKS ARE MAGNETIC
ALTITUDES, HEIGHTS AND ELEVATIONS ARE IN METRES
DISTANCES ARE IN KILOMETRES