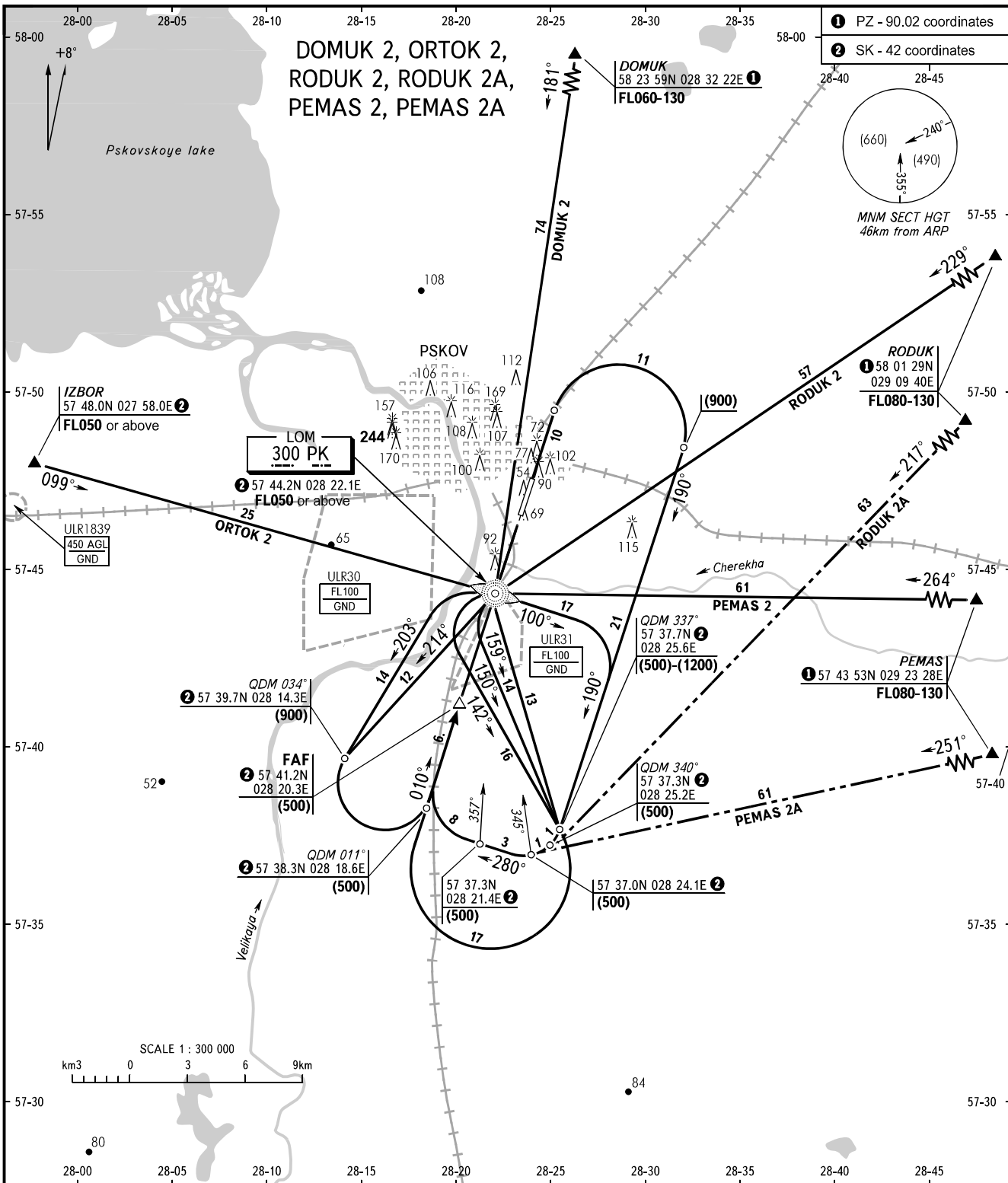


STANDARD ARRIVAL CHART
INSTRUMENT (STAR) - ICAO

PSKOV, RUSSIA
PSKOV
RWY 01

TRANSITION
LEVEL: **3**



TOWER 122.000

3 TRANSITION LEVEL:
- FL050 when atmospheric pressure is 733mm mercury column or above;
- FL060 when atmospheric pressure is less than 733mm.

BEARINGS AND TRACKS ARE MAGNETIC
ALTITUDES, HEIGHTS AND ELEVATIONS ARE IN METRES
DISTANCES ARE IN KILOMETRES

CHANGE: New chart