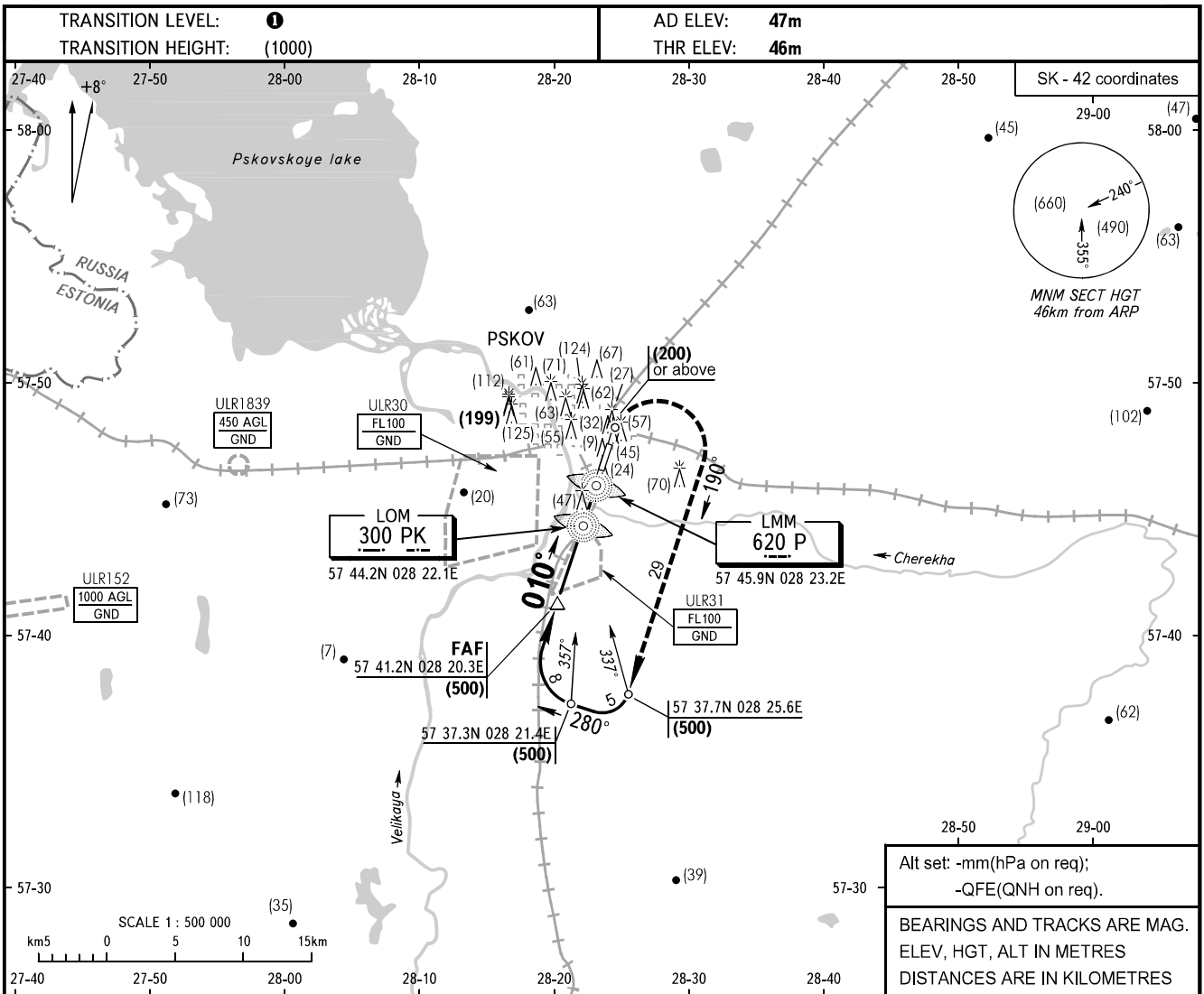


**INSTRUMENT
APPROACH
CHART - ICAO**

TOWER **122.000**

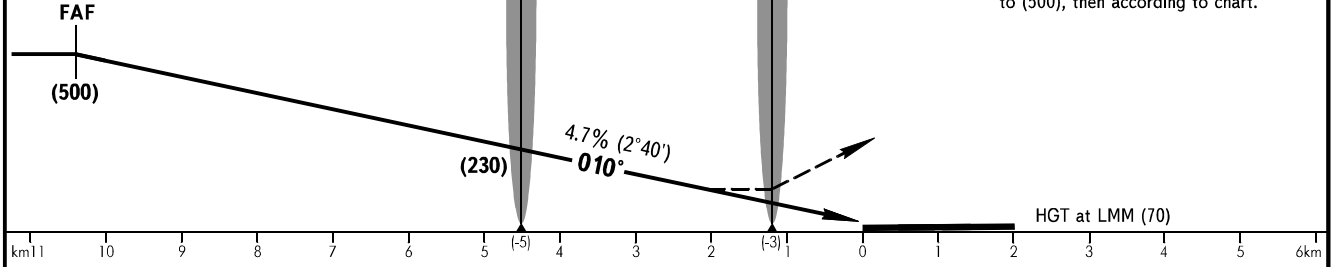
PSKOV, RUSSIA
PSKOV
2 NDB, NDB RWY 01



The flight crew shall receive the information from TAR controller about the distance between the aircraft and RWY THR.

FAF is AZM 190° DIST 10.4 from TAR (57 46 52N 028 23 51E).

MISSED APPROACH
Climb on track 010° to (200) or above, then turn RIGHT on track 190° climbing to (500), then according to chart.



OCA/H		A	B	C	D								
Straight-in Approach	2 NDB	With FAF	168(122)	168(122)	168(122)	168(122)							
		WO FAF	273(227)	273(227)	273(227)	273(227)							
	NDB (LMM)	With FAF	168(122)	168(122)	168(122)	168(122)							
		WO FAF	273(227)	273(227)	273(227)	273(227)							
NDB (LOM)	With FAF	168(122)	168(122)	168(122)	168(122)								
	WO FAF	273(227)	273(227)	273(227)	273(227)								
GROUND SPEED		km/h	150	180	210	240	270	300	330	360	390	420	450
FAF-MAPt 9200m		min:sec	3.41	3.04	2.38	2.18	2.03	1.50	1.40	1.32	1.25	1.19	1.14
RATE OF DESCENT		m/s	1.9	2.3	2.7	3.1	3.5	3.9	4.3	4.7	5.0	5.5	5.8

1 TRANSITION LEVEL:
- FL050 when atmospheric pressure is 733mm mercury column or above;
- FL060 when atmospheric pressure is less than 733mm.

CHANGE: New chart