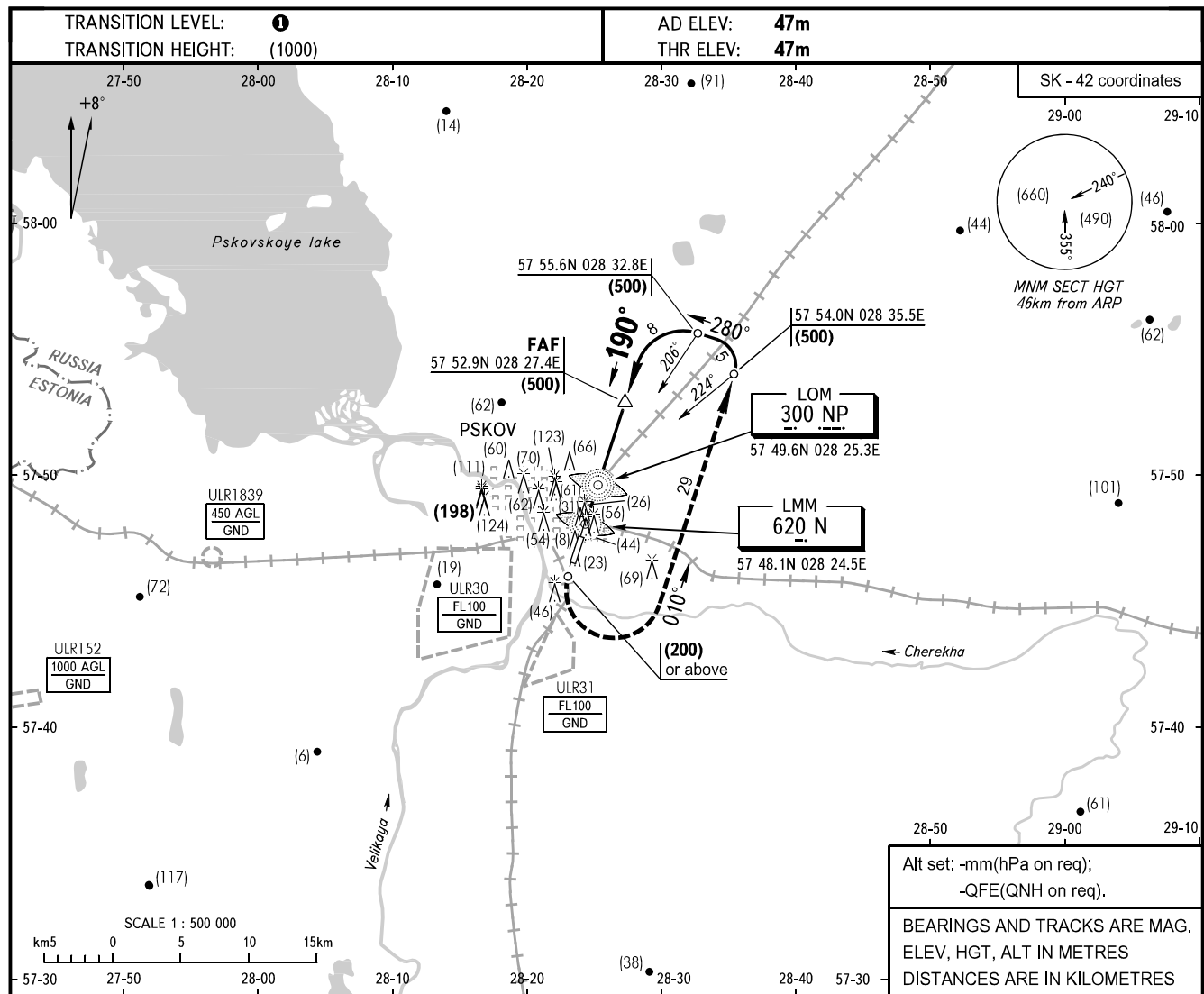


**INSTRUMENT
APPROACH
CHART - ICAO**

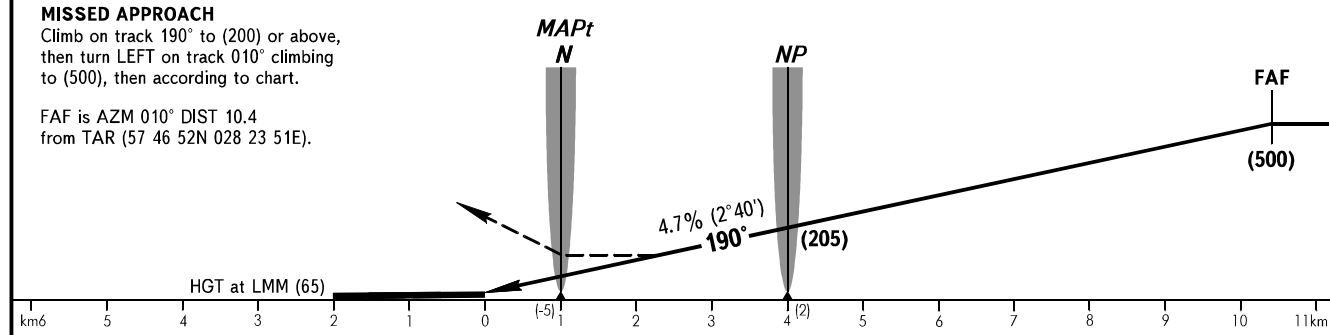
TOWER **122.000**

PSKOV, RUSSIA
PSKOV
2 NDB, NDB RWY 19



Alt set: -mm(hPa on req);
-QFE(QNH on req).
BEARINGS AND TRACKS ARE MAG.
ELEV, HGT, ALT IN METRES
DISTANCES ARE IN KILOMETRES

MISSED APPROACH
Climb on track 190° to (200) or above,
then turn LEFT on track 010° climbing
to (500), then according to chart.
FAF is AZM 010° DIST 10.4
from TAR (57 46 52N 028 23 51E).



OCA/H		A	B	C	D
Straight-in	2 NDB	167(120)	167(120)	167(120)	167(120)
	With FAF	185(138)	185(138)	185(138)	185(138)
Approach	NDB (LMM)	260(213)	260(213)	260(213)	260(213)
	With FAF	242(195)	242(195)	242(195)	242(195)
	NDB (LOM)	260(213)	260(213)	260(213)	260(213)
	With FAF	260(213)	260(213)	260(213)	260(213)

TRANSITION LEVEL:
- FL050 when atmospheric pressure is 733mm mercury column or above;
- FL060 when atmospheric pressure is less than 733mm.
WARNING
When crossing LMM increase control over the flight height to avoid the collision with vehicles on the highway.

GROUND SPEED	km/h	150	180	210	240	270	300	330	360	390	420	450
FAP-MAPt 9330m	min:sec	3.44	3.07	2.40	2.20	2.04	1.52	1.42	1.33	1.26	1.20	1.15
RATE OF DESCENT	m/s	1.9	2.3	2.7	3.1	3.5	3.9	4.3	4.7	5.1	5.4	5.8