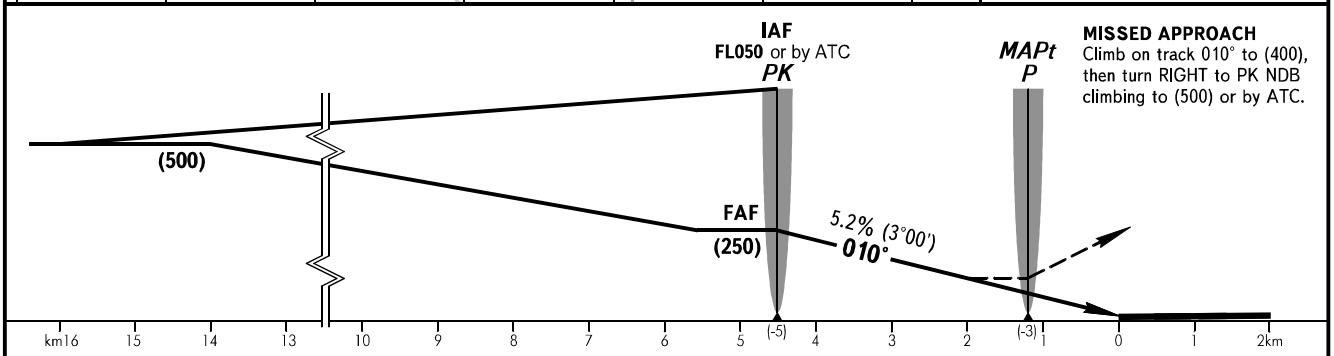
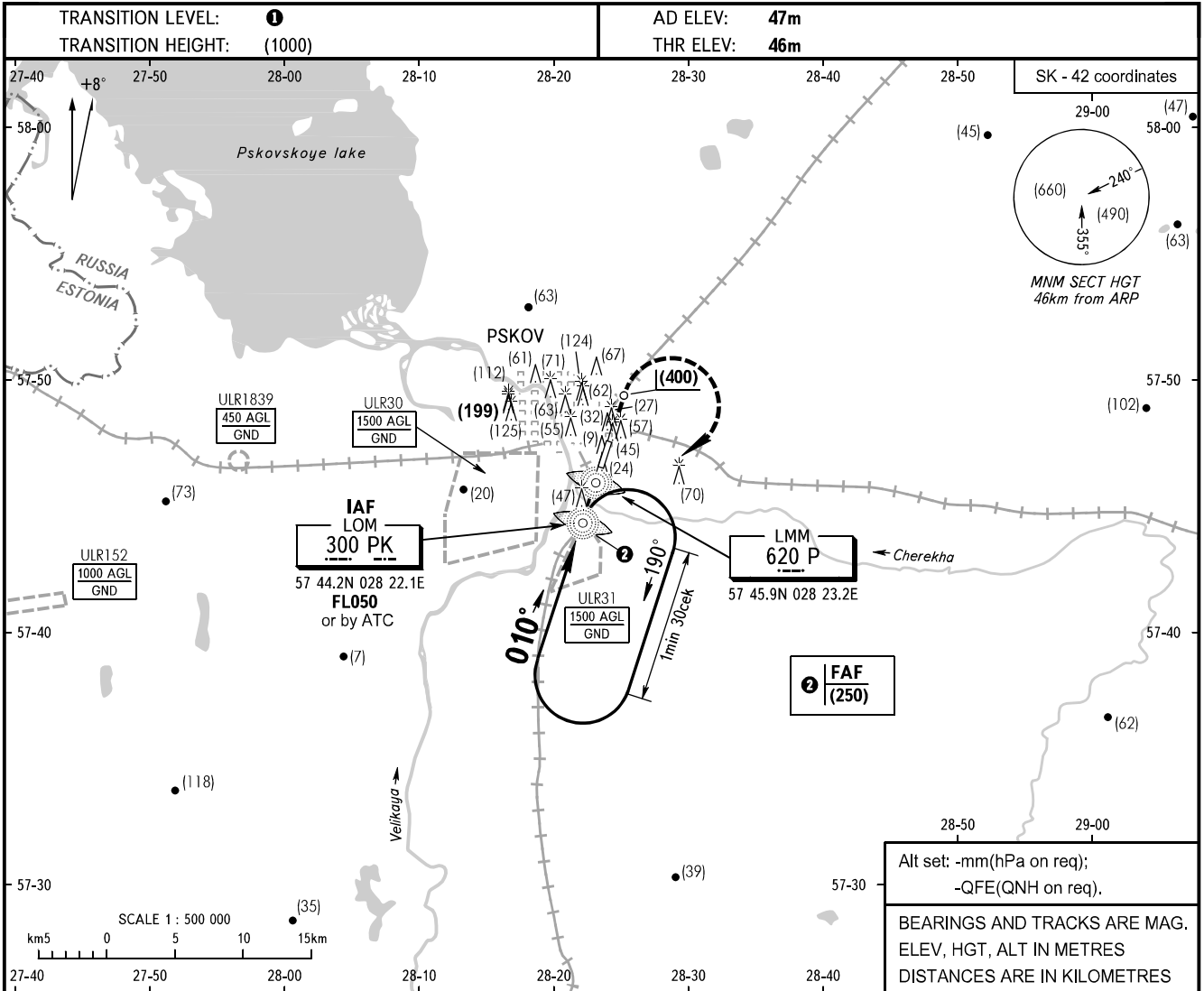


**INSTRUMENT  
APPROACH  
CHART - ICAO**

**PSKOV, RUSSIA  
PSKOV  
NDB RWY 01**

TOWER **122.000**



OCA/H		A	B	C	D
Straight-in	NDB	170(125)	170(125)	170(125)	
	Approach				

**①** TRANSITION LEVEL:  
- FL050 when atmospheric pressure is 733mm mercury column or above;  
- FL060 when atmospheric pressure is less than 733mm.

GROUND SPEED	km/h	150	180	210	240	270	300	330				
FAF-MAPt 3300m	min:sec	1.19	1.06	0.57	0.49	0.44	0.40	0.36				
RATE OF DESCENT	m/s	2.2	2.7	3.1	3.6	4.0	4.5	4.9				

CHANGE: New chart