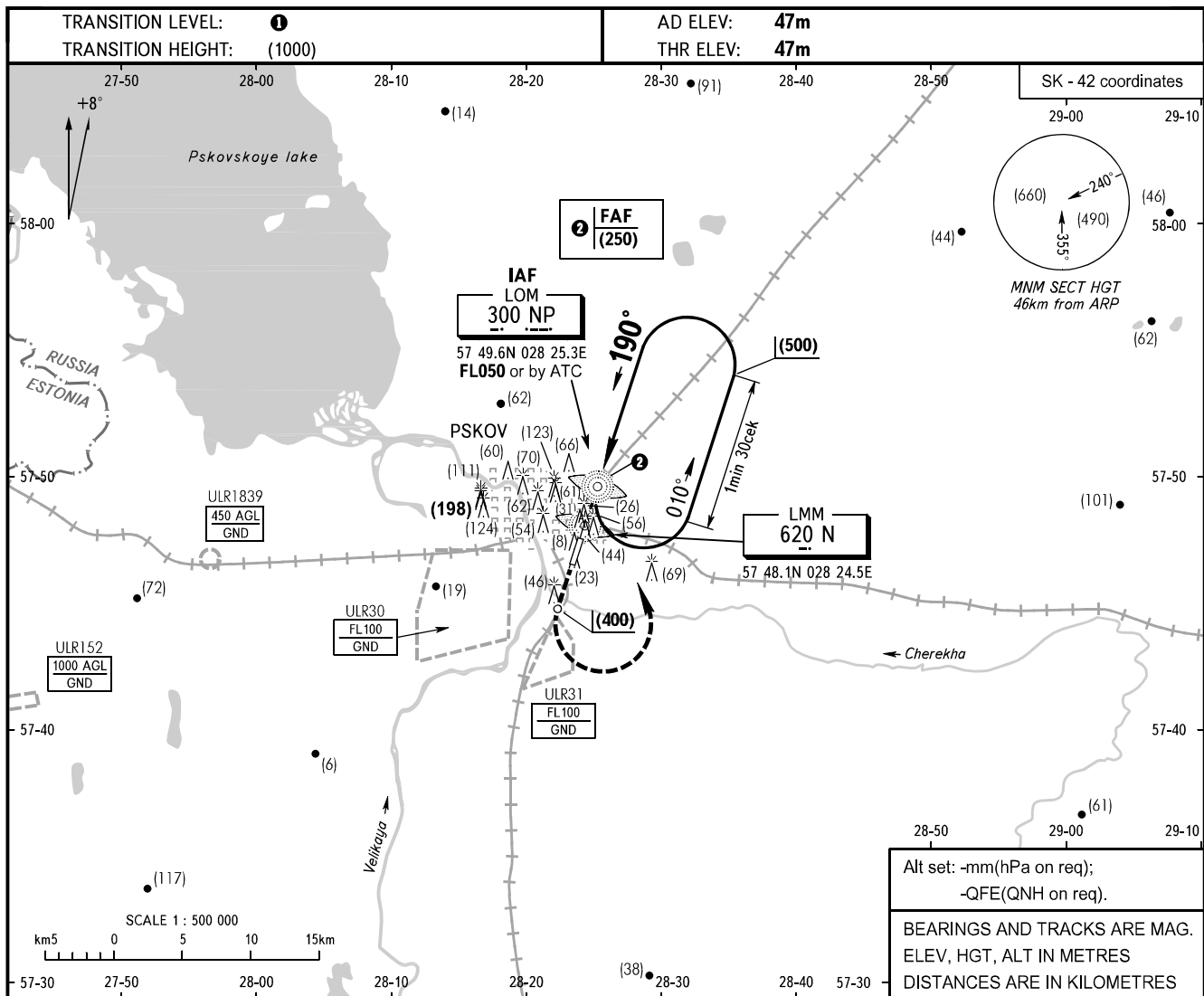


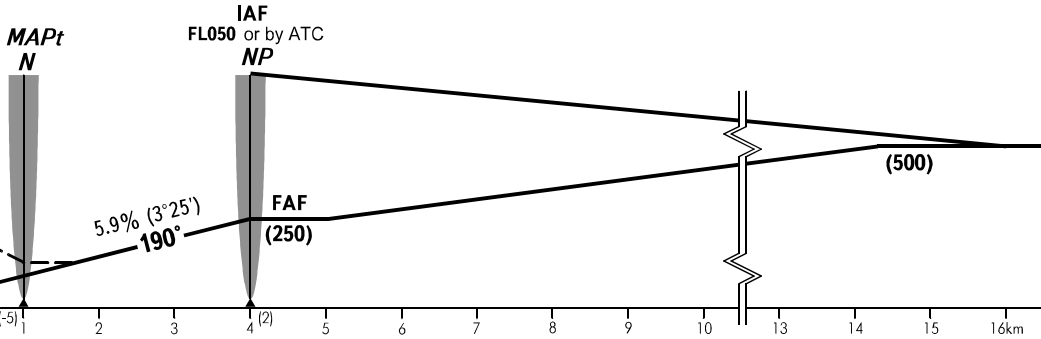
**INSTRUMENT  
APPROACH  
CHART - ICAO**

TOWER **122.000**

**PSKOV, RUSSIA**  
PSKOV  
NDB RWY 19



**MISSED APPROACH**  
Climb on track 190° to (400),  
then turn LEFT to NP NDB  
climbing to (500) or by ATC.



OCA/H		A	B	C	D
Straight-in	<b>NDB</b>	242(195)	242(195)	242(195)	
	Approach				

**1** TRANSITION LEVEL:  
- FL050 when atmospheric pressure is 733mm mercury column or above;  
- FL060 when atmospheric pressure is less than 733mm.

GROUND SPEED	km/h	150	180	210	240	270	300	330				
FAP-MAPt 3000m	min:sec	1.12	1.00	0.51	0.45	0.40	0.36	0.33				
RATE OF DESCENT	m/s	2.5	3.0	3.4	3.9	4.4	4.9	5.4				