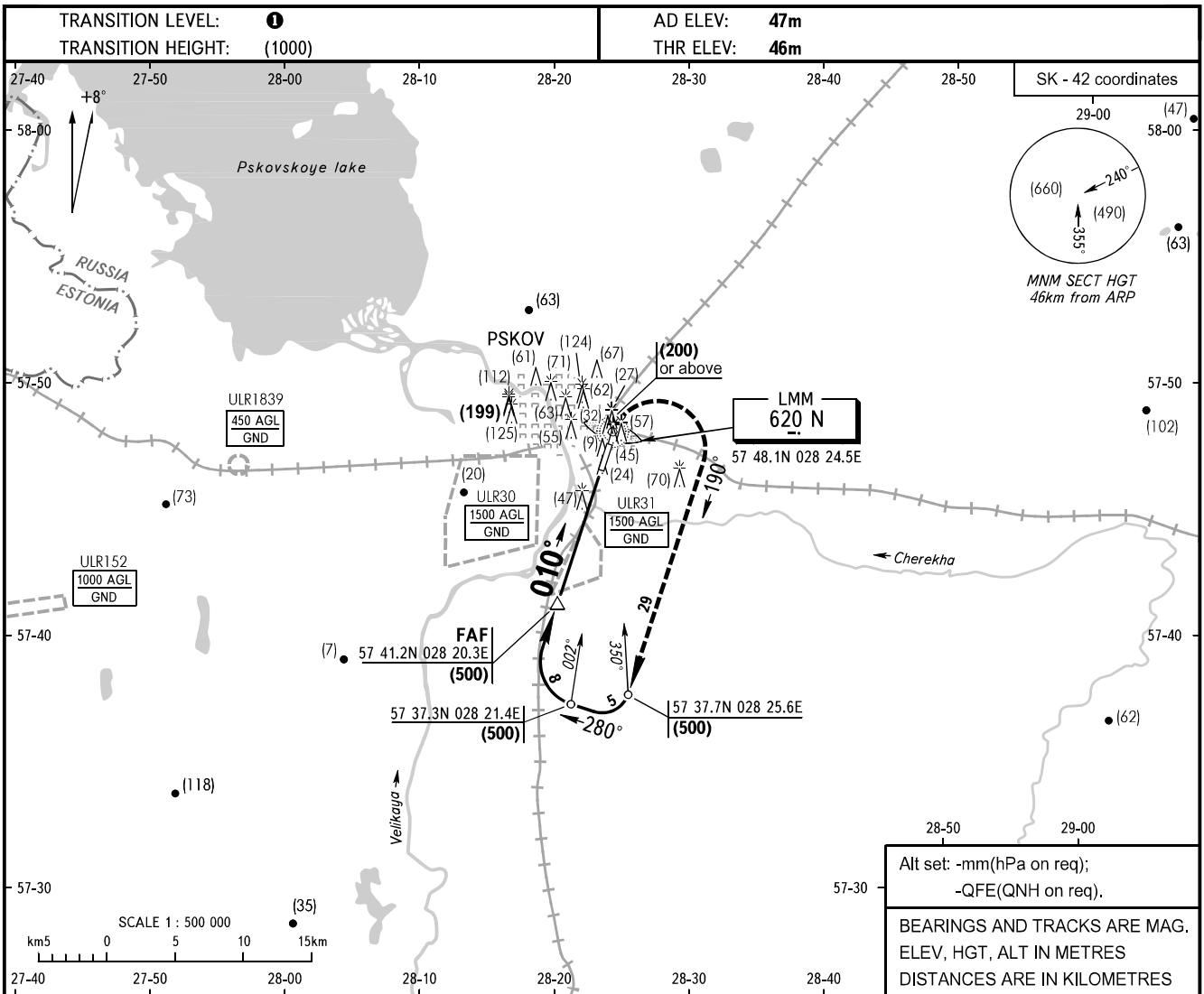


**INSTRUMENT  
APPROACH  
CHART - ICAO**

TOWER	<b>122.000</b>
-------	----------------

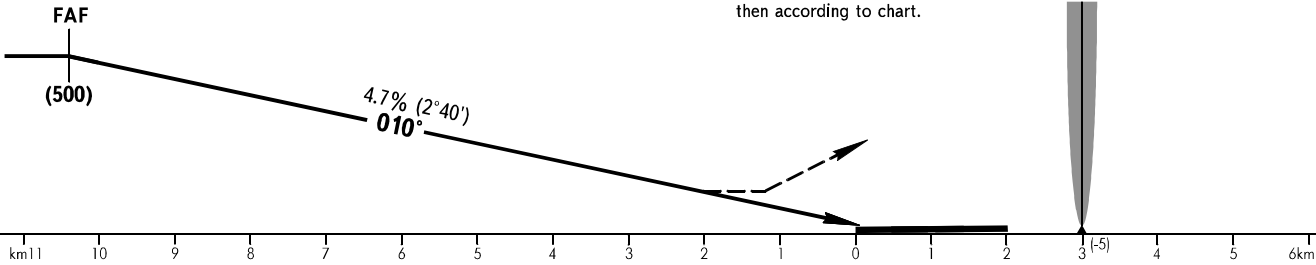
**PSKOV, RUSSIA**  
PSKOV  
NDB RWY 01



FAF is AZM 010° DIST 10.4  
from TAR (57 46 52N 028 23 51E).

**MISSED APPROACH**

Climb on track 010° to (200), then turn  
RIGHT on track 190° climbing to (500),  
then according to chart.



OCA/H		A	B	C	D	
Straight-in	NDB	With FAF	295(250)	295(250)	345(300)	345(300)
		WO FAF	345(300)	345(300)	345(300)	345(300)
Approach						

**1 TRANSITION LEVEL:**

- FL050 when atmospheric pressure is 733mm mercury column or above;
- FL060 when atmospheric pressure is less than 733mm.

GROUND SPEED	km/h	150	180	210	240	270	300	330	360	390	420	450
FAF-MAPt 8103m	min:sec	3.14	2.42	2.19	2.02	1.48	1.37	1.28	1.21	1.15	1.09	1.05
RATE OF DESCENT	m/s	1.9	2.3	2.7	3.1	3.5	3.9	4.3	4.7	5.0	5.5	5.8