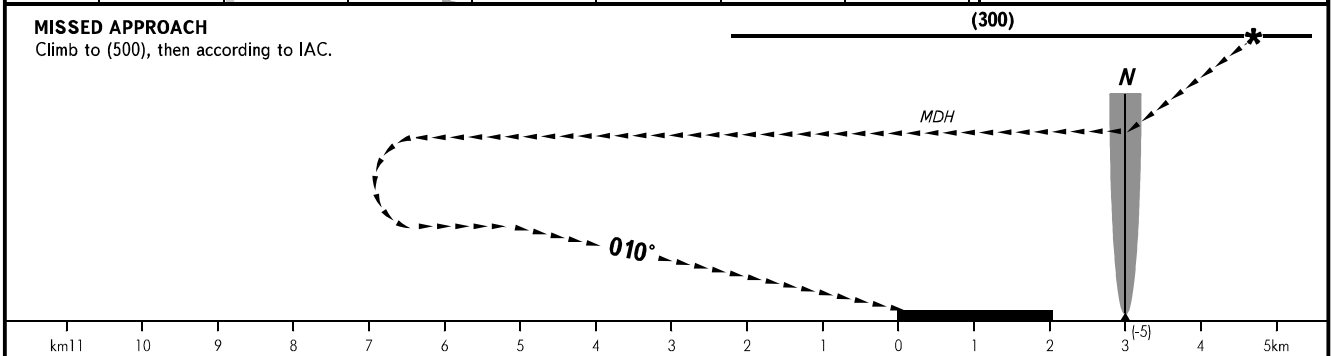
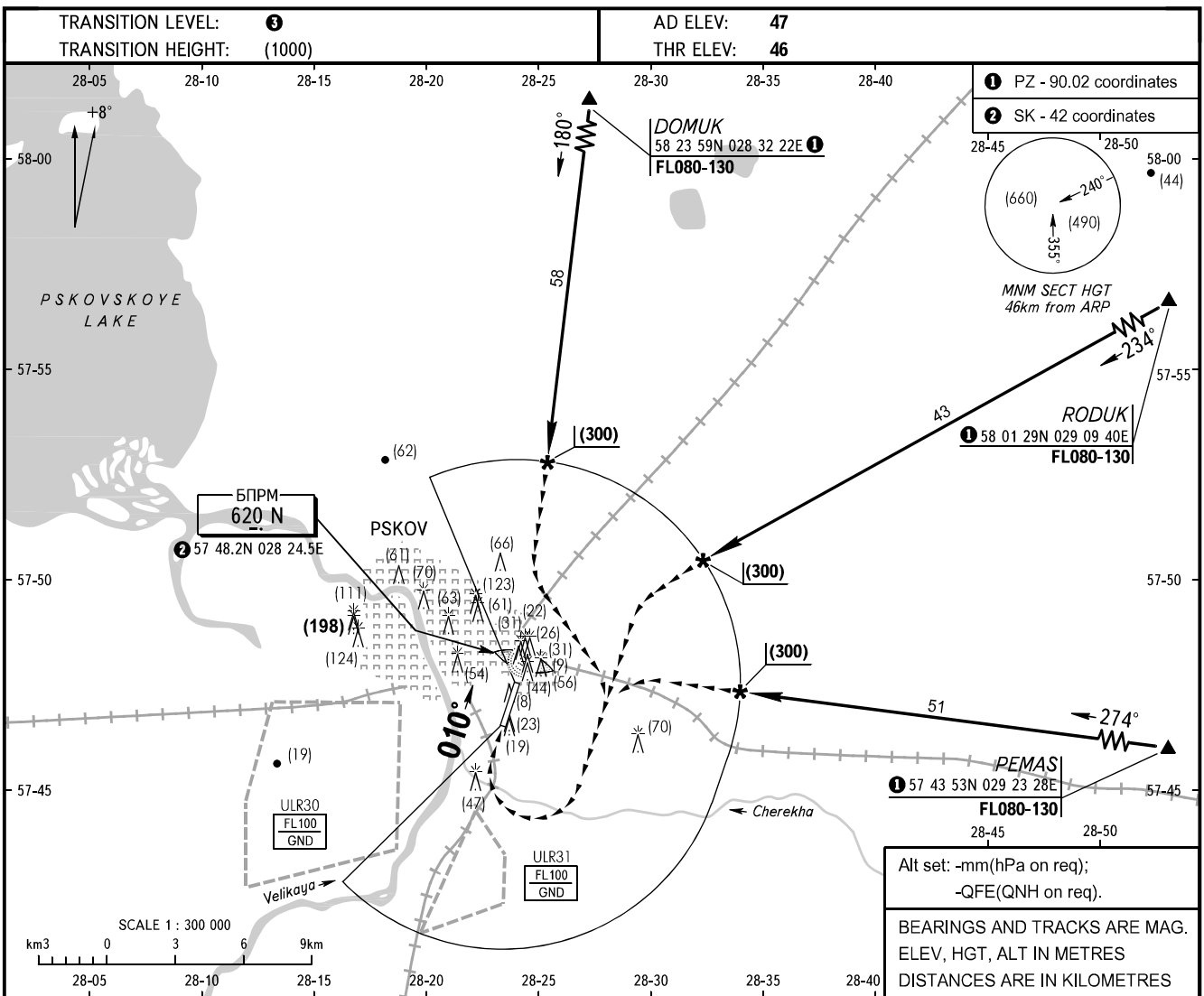


**VISUAL  
APPROACH  
CHART - ICAO**

**PSKOV  
PSKOV  
CIRCLING RWY 01**

TOWER 122.000



OCA/H		A	B	C	D	D wide body
Visual Manoeuvring (Circling) Area	<b>RWY 01</b>	189(143)	189(143)	236(190)	236(190)	346(300)
ACFT CAT		A	B	C	D	D wide body
MET conditions	MDH, m	150	150	190	210	300
	Cloud base, m	350	350	350	350	400
	Visibility, m	3000	3000	3000	4000	5000

**NOTE:** The radius of visual manoeuvring (circling) area for all ACFT categories:  
A - 3120m,  
B - 4900m,  
C - 7850m,  
D - 9790m.

3 **TRANSITION LEVEL:**  
- FL050 when atmospheric pressure is 733mm mercury column or above;  
- FL060 when atmospheric pressure is less than 733mm.

CHANGE: New chart