

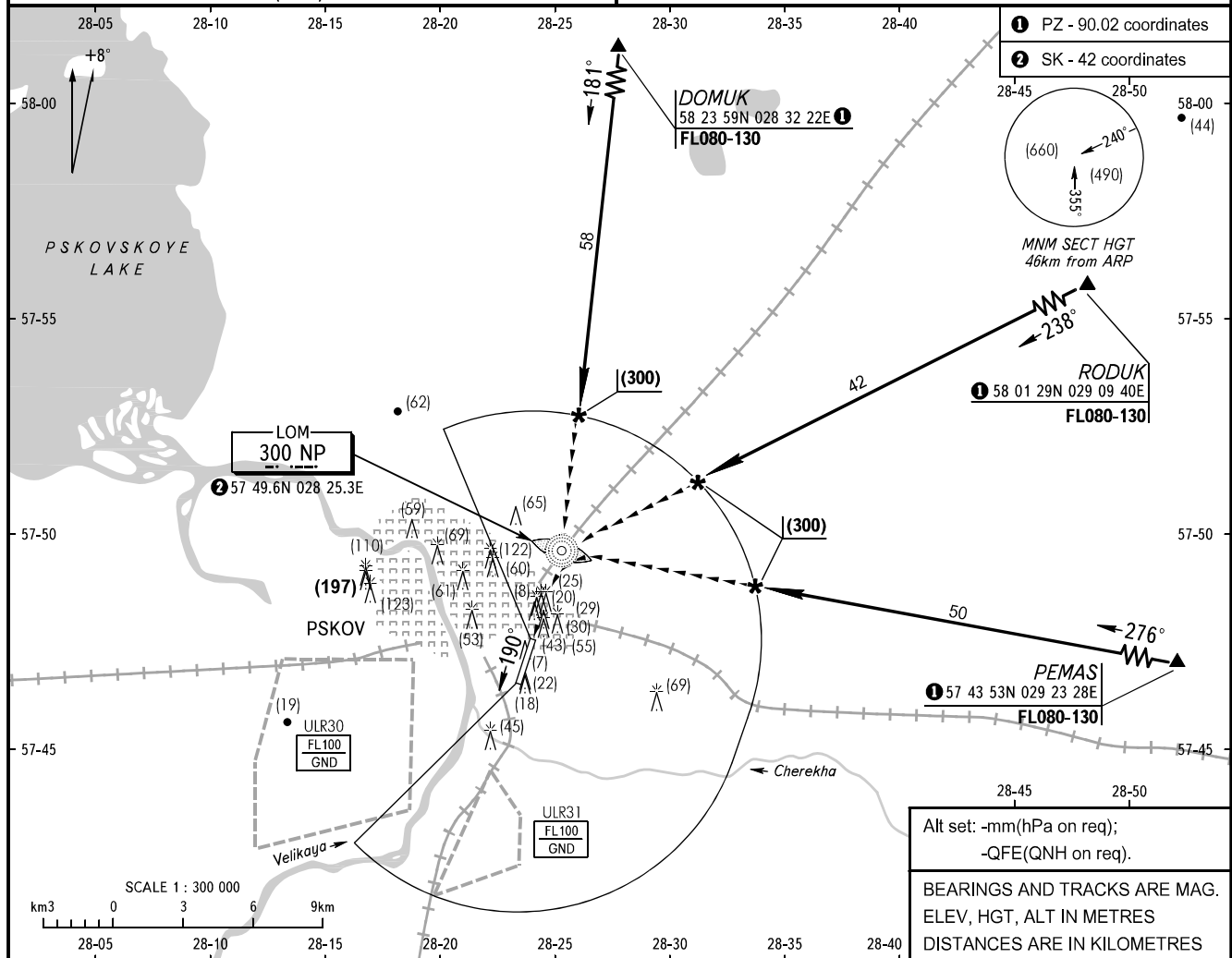
VISUAL
APPROACH
CHART - ICAO

PSKOV
PSKOV
CIRCLING RWY 19

TOWER 122.000

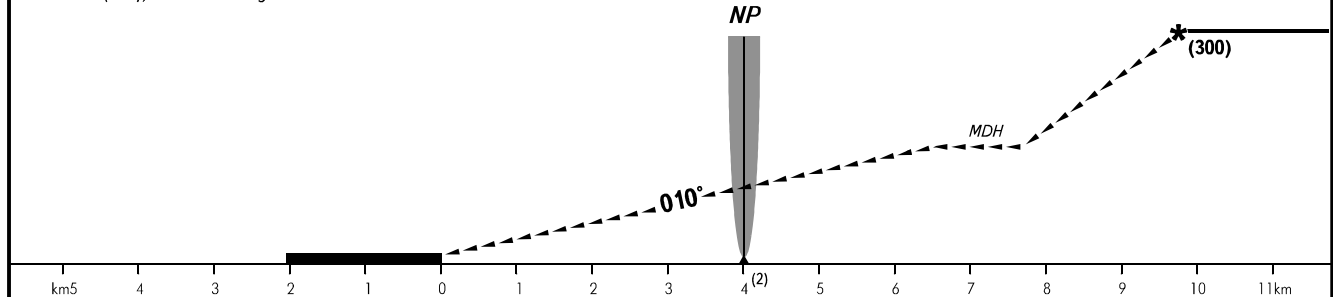
TRANSITION LEVEL: **3**
TRANSITION HEIGHT: (1000)

AD ELEV: 47
THR ELEV: 47



MISSED APPROACH

Climb to (500), then according to IAC.



OCA/H		A	B	C	D	D wide body
Visual Manoeuvring (Circling) Area	RWY 19	189(143)	189(143)	236(189)	236(190)	346(300)
ACFT CAT		A	B	C	D	D wide body
MET conditions	MDH, m	150	150	190	210	300
	Cloud base, m	350	350	350	350	400
	Visibility, m	3000	3000	3000	4000	5000

NOTE: The radius of visual manoeuvring (circling) area for all ACFT categories:
A - 3120m,
B - 4900m,
C - 7850m,
D - 9790m.

3 TRANSITION LEVEL:
- FL050 when atmospheric pressure is 733mm mercury column or above;
- FL060 when atmospheric pressure is less than 733mm.