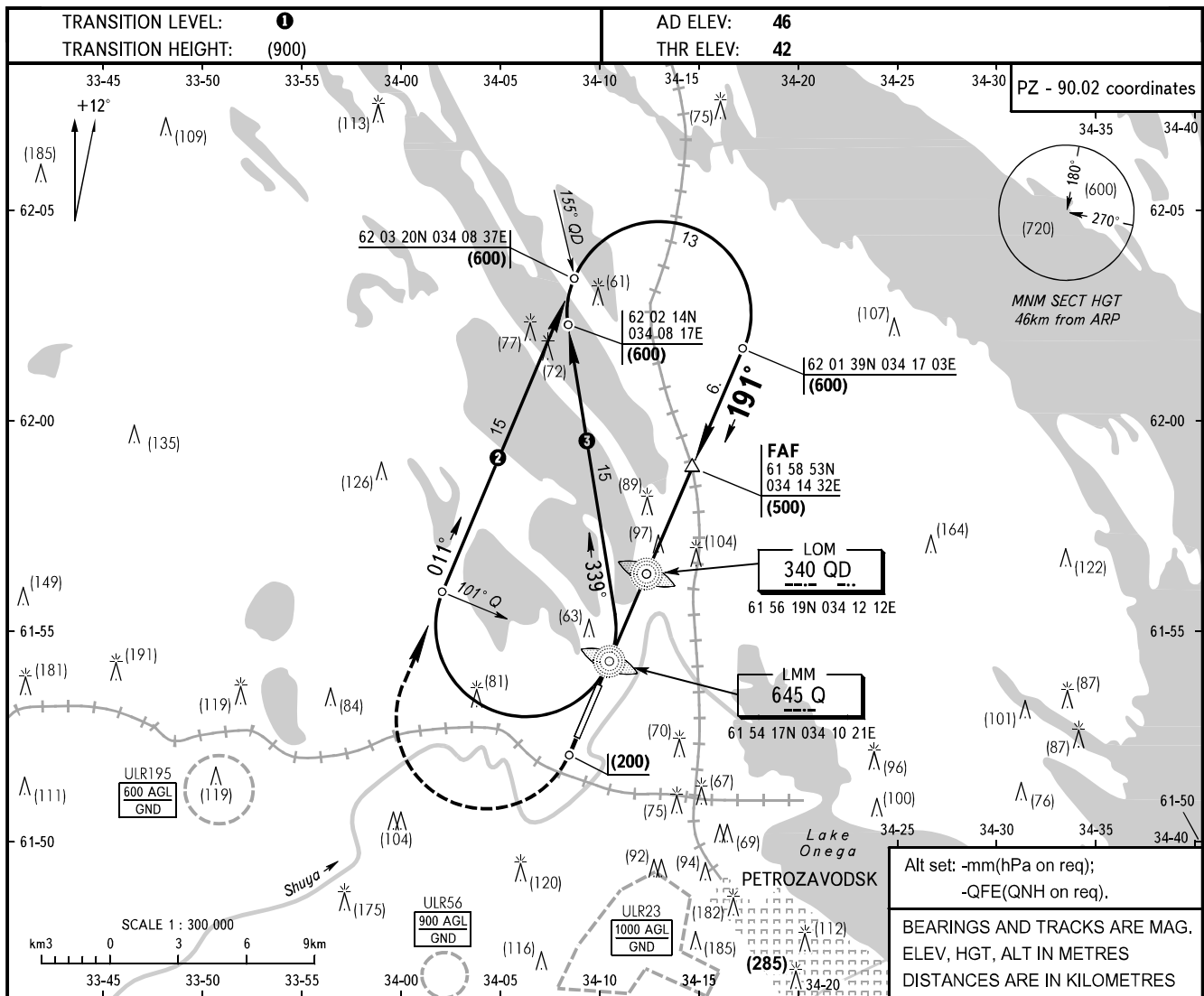


**INSTRUMENT  
APPROACH  
CHART - ICAO**

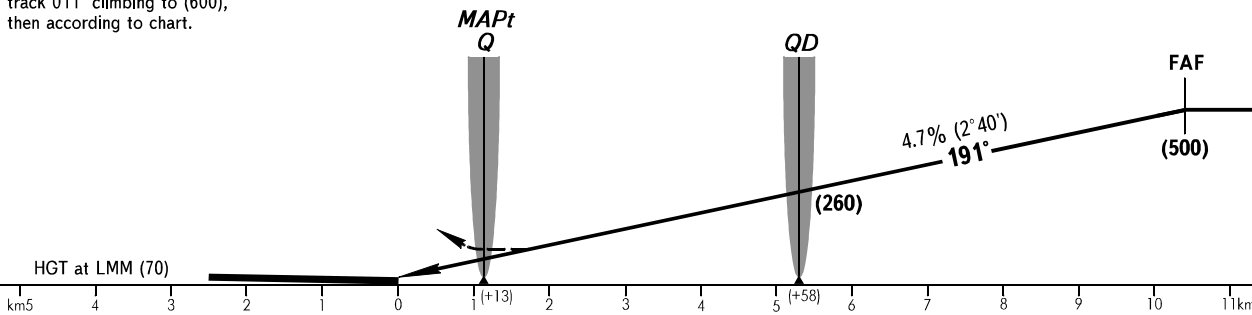
TOWER **128.000**

**PETROZAVODSK, RUSSIA**  
BESOVETS  
2 NDB RWY 19



**MISSED APPROACH**  
Climb to (200), turn RIGHT onto track 011° climbing to (600), then according to chart.

FAF is fixed by TAR  
(61 53 07N 034 09 43E)



OCA/H		A	B	C	D								
Straight-in	2 NDB	With FAF	151(109)	151(109)	151(109)	151(109)							
		WO FAF	151(109)	151(109)	151(109)	151(109)							
Approach													
GROUND SPEED		km/h	150	180	210	240	270	300	330	360	390	420	450
RATE OF DESCENT		m/s	2.0	2.4	2.7	3.1	3.5	3.9	4.3	4.7	5.1	5.5	5.9

- ① **TRANSITION LEVEL:**  
- FLO50 when atmospheric pressure is 733mm mercury column or above;  
- FLO60 when atmospheric pressure is less than 733mm and is 706mm or above.
- ② Approach from BERTA, BELOD, BUKUS, SELGA, STAVA.
- ③ Approach from KESKO.