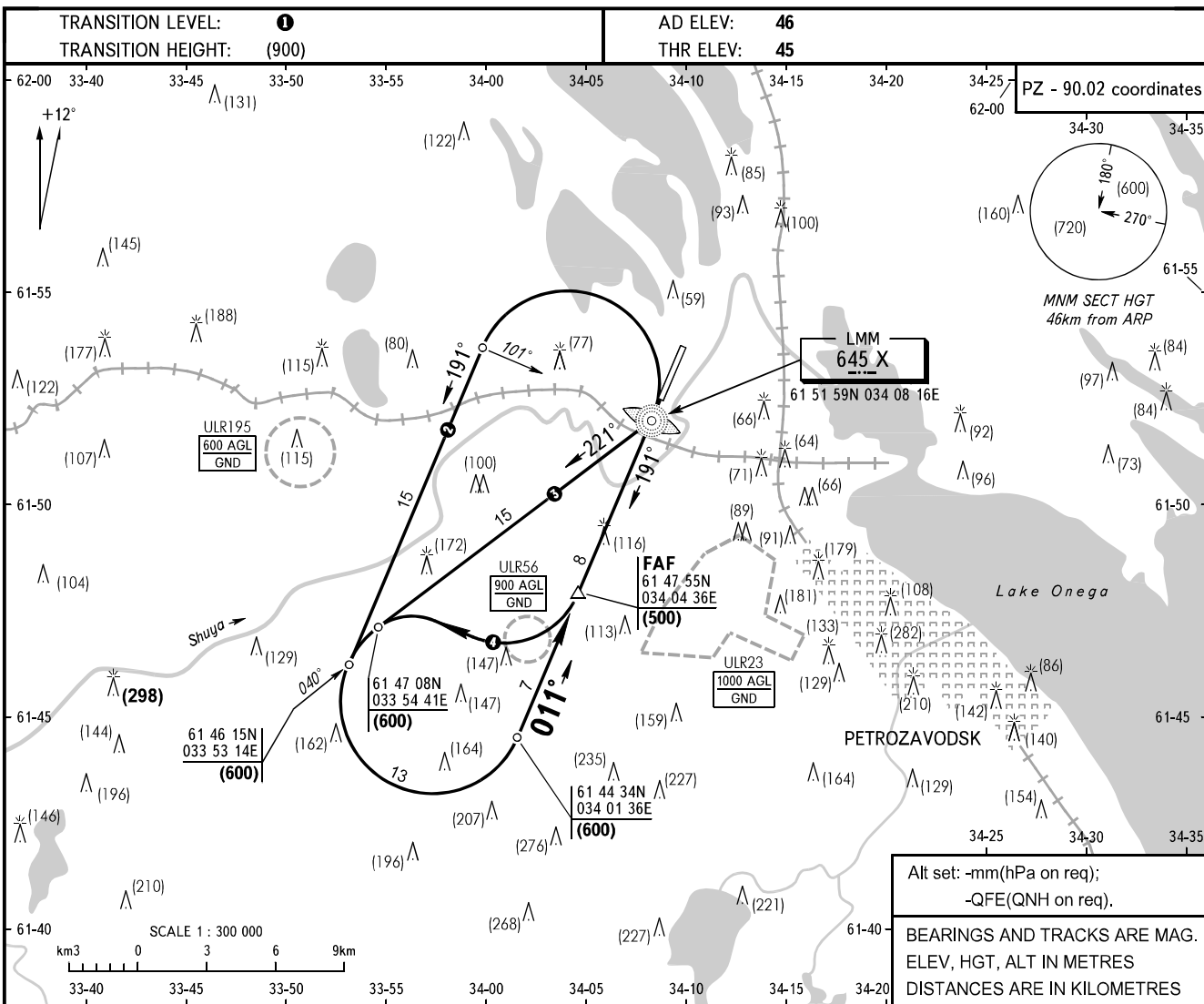


**INSTRUMENT
APPROACH
CHART - ICAO**

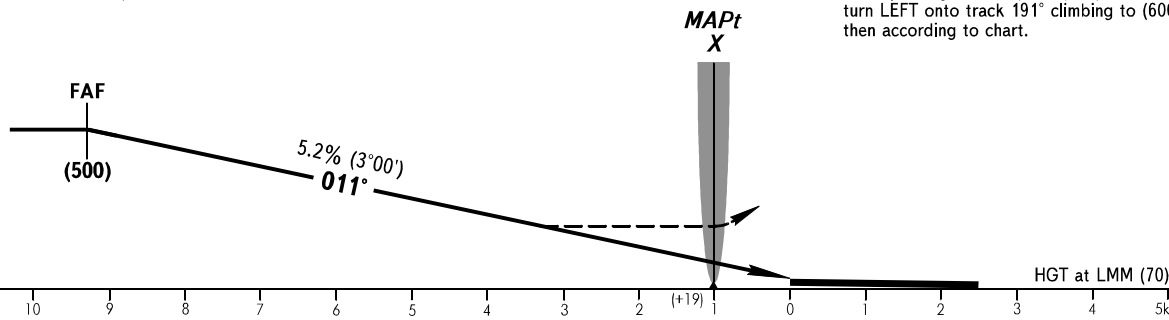
TOWER **128.000**

**PETROZAVODSK, RUSSIA
BESOVETS
NDB RWY 01**



FAF is fixed by TAR
(61 53 07N 034 09 43E)

MISSED APPROACH
After passing LMM X (HGT (200) or above)
turn LEFT onto track 191° climbing to (600),
then according to chart.



| OCA/H | | A | B | C | D | | | | | | | | |
|-----------------|-----------|----------|----------|----------|----------|-----|-----|-----|-----|-----|-----|-----|-----|
| Straight-in | NDB (LMM) | 237(191) | 237(191) | 237(191) | 237(191) | | | | | | | | |
| | With FAF | 343(297) | 343(297) | 343(297) | 343(297) | | | | | | | | |
| Approach | WO FAF | | | | | | | | | | | | |
| | | | | | | | | | | | | | |
| GROUND SPEED | | km/h | 150 | 180 | 210 | 240 | 270 | 300 | 330 | 360 | 390 | 420 | 450 |
| RATE OF DESCENT | | m/s | 2.2 | 2.6 | 3.1 | 3.5 | 3.9 | 4.3 | 4.8 | 5.2 | 5.6 | 6.1 | 6.5 |

- ① TRANSITION LEVEL:
- FL050 when atmospheric pressure is 733mm mercury column or above;
- FL060 when atmospheric pressure is less than 733mm and is 706mm or above.
- ② Approach from BERTA, KESKO, SELGA, STAVA.
- ③ Approach from BELOD.
- ④ Approach from BUKUS.

CHANGE: OCA/H, ELEV