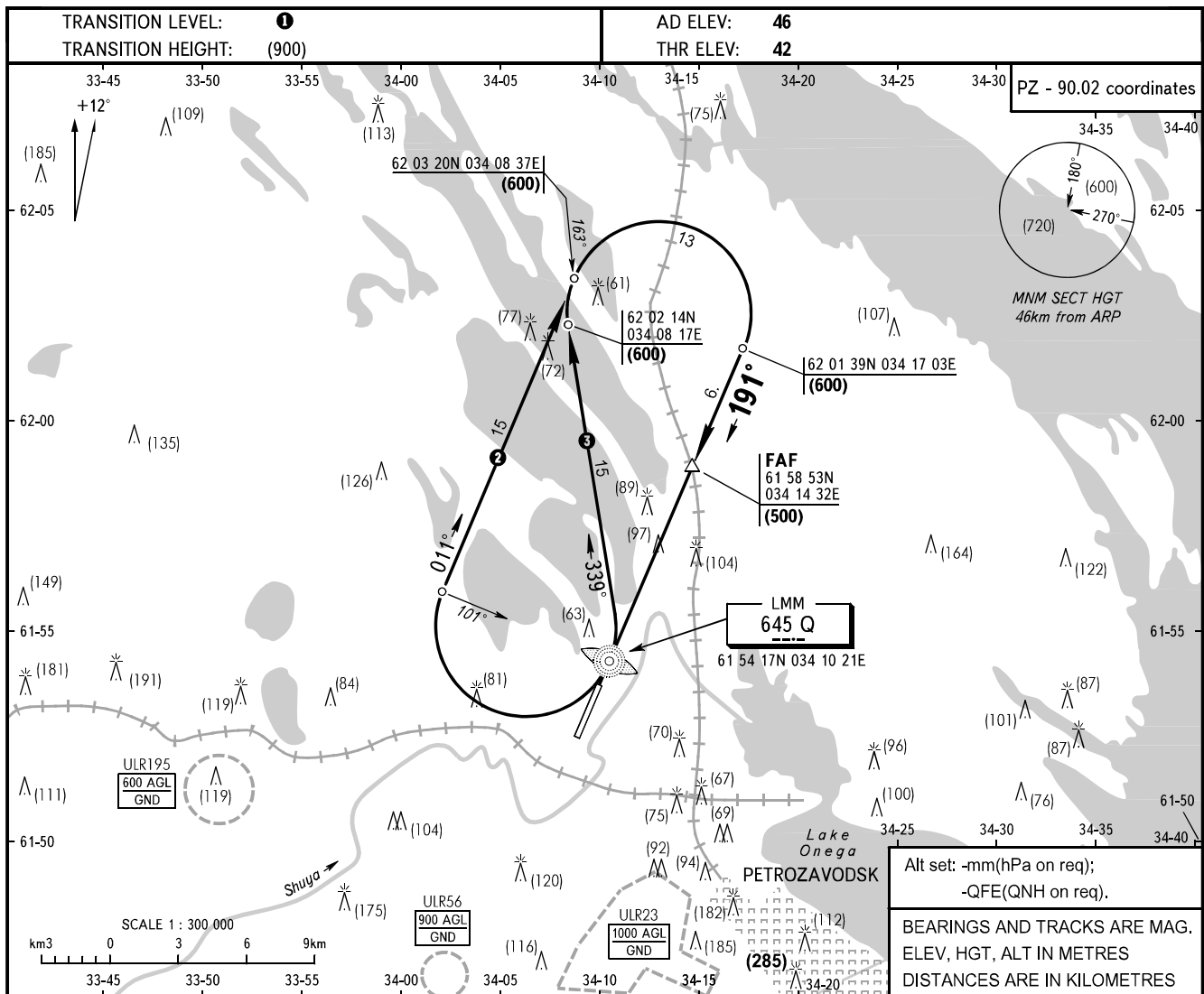


INSTRUMENT
APPROACH
CHART - ICAO

TOWER 128.000

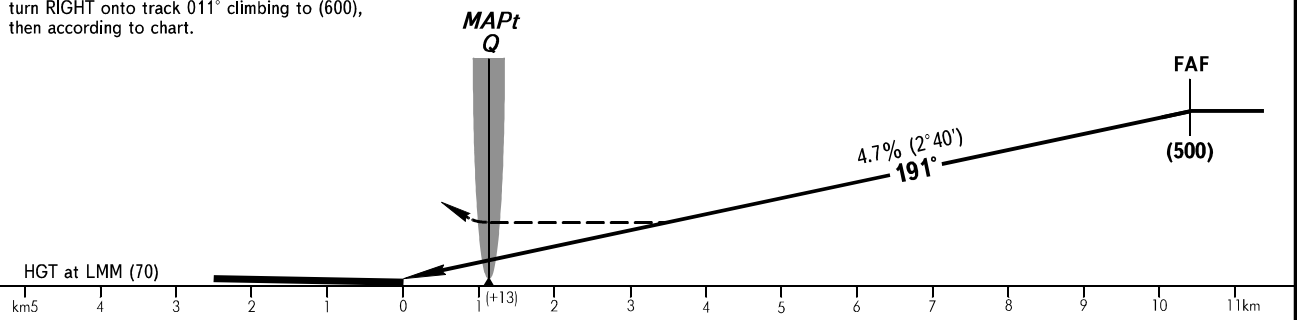
PETROZAVODSK, RUSSIA
BESOVETS
NDB RWY 19



MISSED APPROACH

After passing LMM Q (HGT (200) or above) turn RIGHT onto track 011° climbing to (600), then according to chart.

FAF is fixed by TAR
(61 53 07N 034 09 43E)



OCA/H		A	B	C	D							
Straight-in	NDB (LMM)	221(179)	221(179)	221(179)	221(179)							
	With FAF	296(254)	296(254)	296(254)	296(254)							
Approach	WO FAF											
GROUND SPEED	km/h	150	180	210	240	270	300	330	360	390	420	450
RATE OF DESCENT	m/s	2.0	2.4	2.7	3.1	3.5	3.9	4.3	4.7	5.1	5.5	5.9

- ① TRANSITION LEVEL:
 - FL050 when atmospheric pressure is 733mm mercury column or above;
 - FL060 when atmospheric pressure is less than 733mm and is 706mm or above.
- ② Approach from BERTA, BELOD, BUKUS, SELGA, STAVA.
- ③ Approach from KESKO.