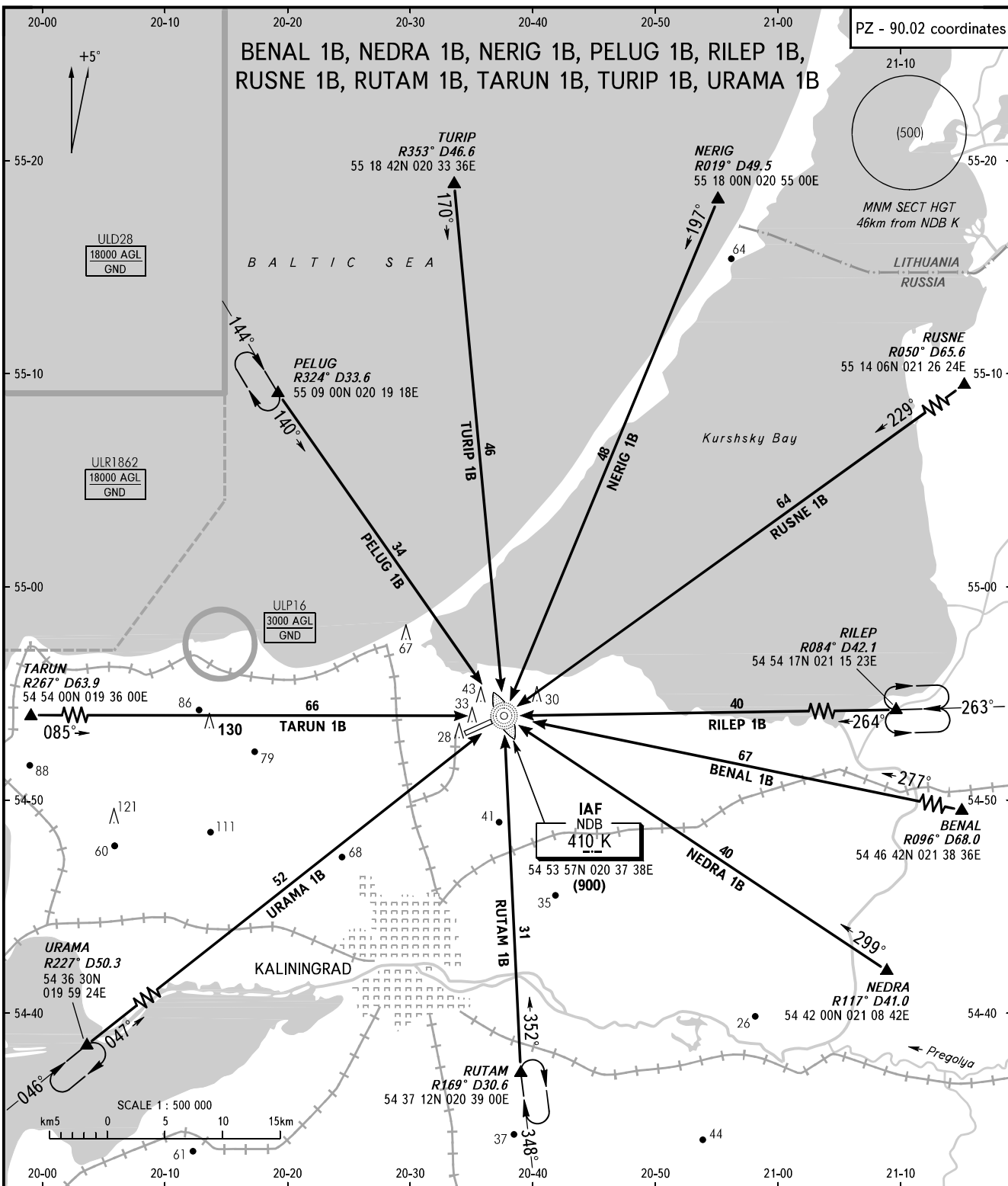


STANDARD ARRIVAL CHART  
INSTRUMENT (STAR) - ICAO

KALININGRAD, RUSSIA  
KHRABROVO  
NDB RWY 06

TRANSITION  
LEVEL : **1**



APPROACH **126.000**  
TOWER **127.200**

**1** TRANSITION LEVEL:  
- FL050 when atmospheric pressure is 742mm mercury column or above.  
- FL060 when atmospheric pressure is less than 742mm or more than 715mm.

BEARINGS AND TRACKS ARE MAGNETIC  
ALTITUDES, HEIGHTS AND ELEVATIONS ARE IN METRES  
DISTANCES ARE IN KILOMETRES

CHANGE: COM