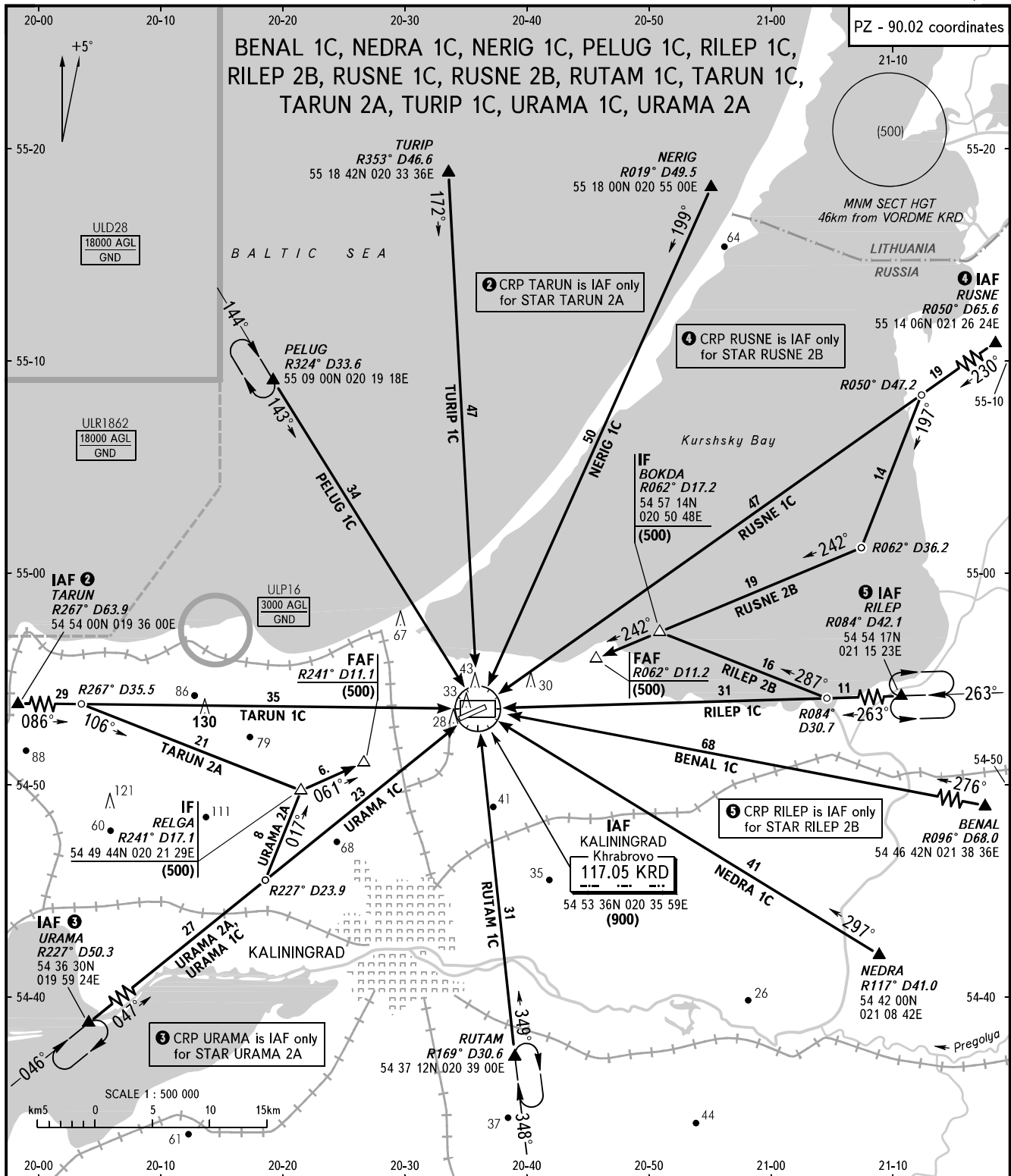


STANDARD ARRIVAL CHART
INSTRUMENT (STAR) - ICAO

KALININGRAD, RUSSIA
KHRABROVO
VOR RWY 06/24

TRANSITION
LEVEL: **1**



APPROACH **126.000**
TOWER **127.200**

1 TRANSITION LEVEL:
- FL050 when atmospheric pressure is 742mm mercury column or above.
- FL060 when atmospheric pressure is less than 742mm or more than 715mm.

BEARINGS AND TRACKS ARE MAGNETIC
ALTITUDES, HEIGHTS AND ELEVATIONS ARE IN METRES
DISTANCES ARE IN KILOMETRES