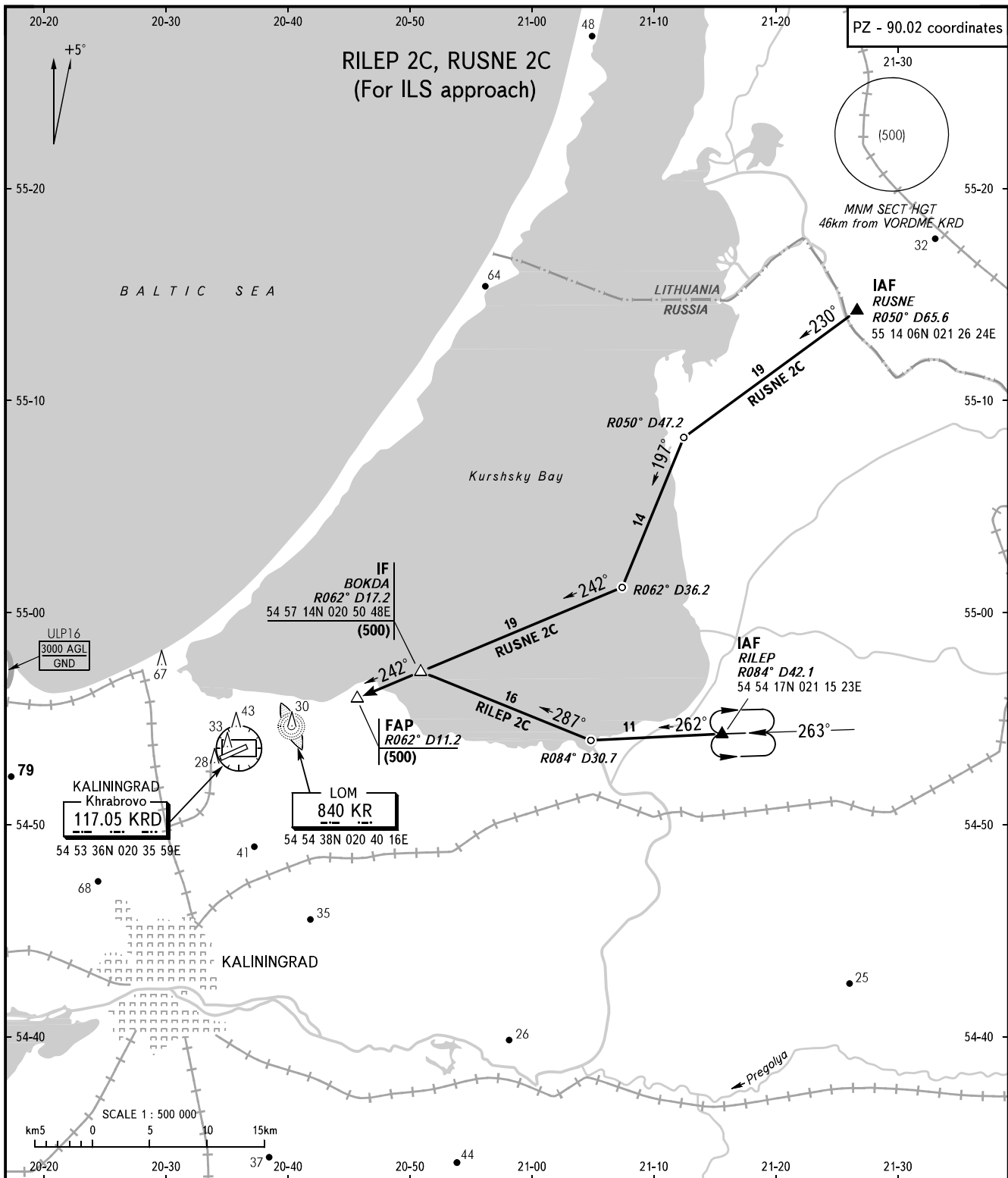


**KALININGRAD, RUSSIA**  
KHRABROVO  
RWY 24

STANDARD ARRIVAL CHART  
INSTRUMENT (STAR) - ICAO

TRANSITION  
LEVEL: **1**



APPROACH **126.000**  
TOWER **127.200**

**1** TRANSITION LEVEL:  
- FLO50 when atmospheric pressure is 742mm mercury column or above.  
- FLO60 when atmospheric pressure is less than 742mm or more than 715mm.

BEARINGS AND TRACKS ARE MAGNETIC  
ALTITUDES, HEIGHTS AND ELEVATIONS ARE IN METRES  
DISTANCES ARE IN KILOMETRES