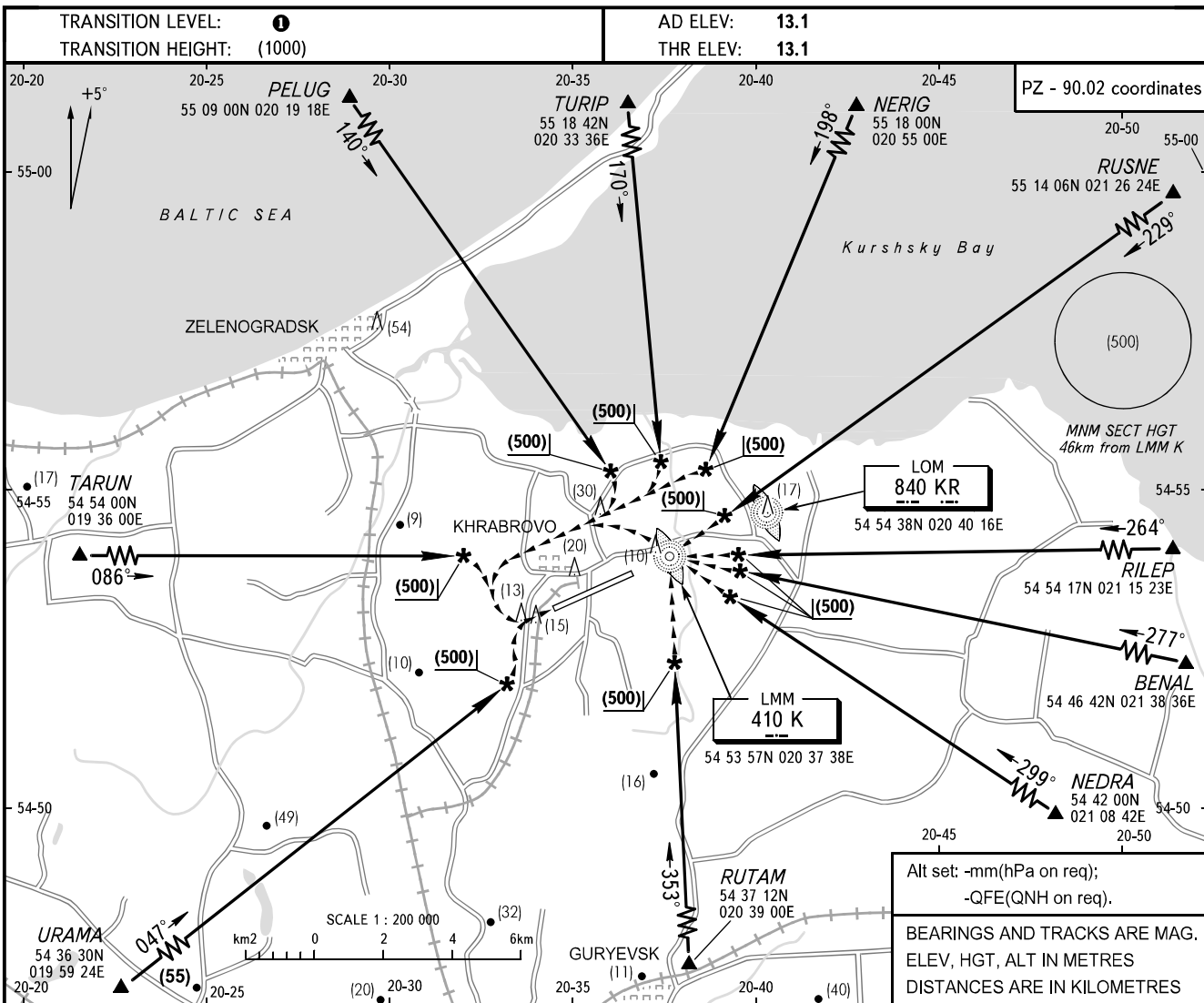


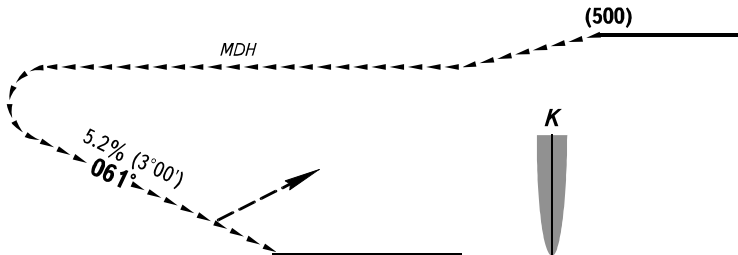
**VISUAL
APPROACH
CHART - ICAO**

TOWER **127.200**

**KALININGRAD, RUSSIA
KHRABROVO
CIRCLING RWY 06**



MISSED APPROACH
Proceed straight ahead to LOM KR climbing to (500), then turn LEFT, then according to IAC.



OCA/H		A	B	C	D
Visual Manoeuvring (Circling) Area		181(168)	181(168)	211(198)	215(202)
ACFT CAT		A	B	C	D
MET conditions	MDH, m	(170)	(170)	(200)	(210)
	Cloud base, m	(500)	(500)	(500)	(500)
	Visibility, m	1600	2500	3000	4000

① TRANSITION LEVEL:
- FL050 when atmospheric pressure is 742mm mercury column and above.
- FL060 when atmospheric pressure is less than 742mm and more than 715mm.

WARNING
The radiuses of visual manoeuvring (circling) area for ACFT categories are as follows:
A - 3110m
B - 4870m
C - 7790m
D - 9690m

CHANGE: COM