

ABAKAN, RUSSIA

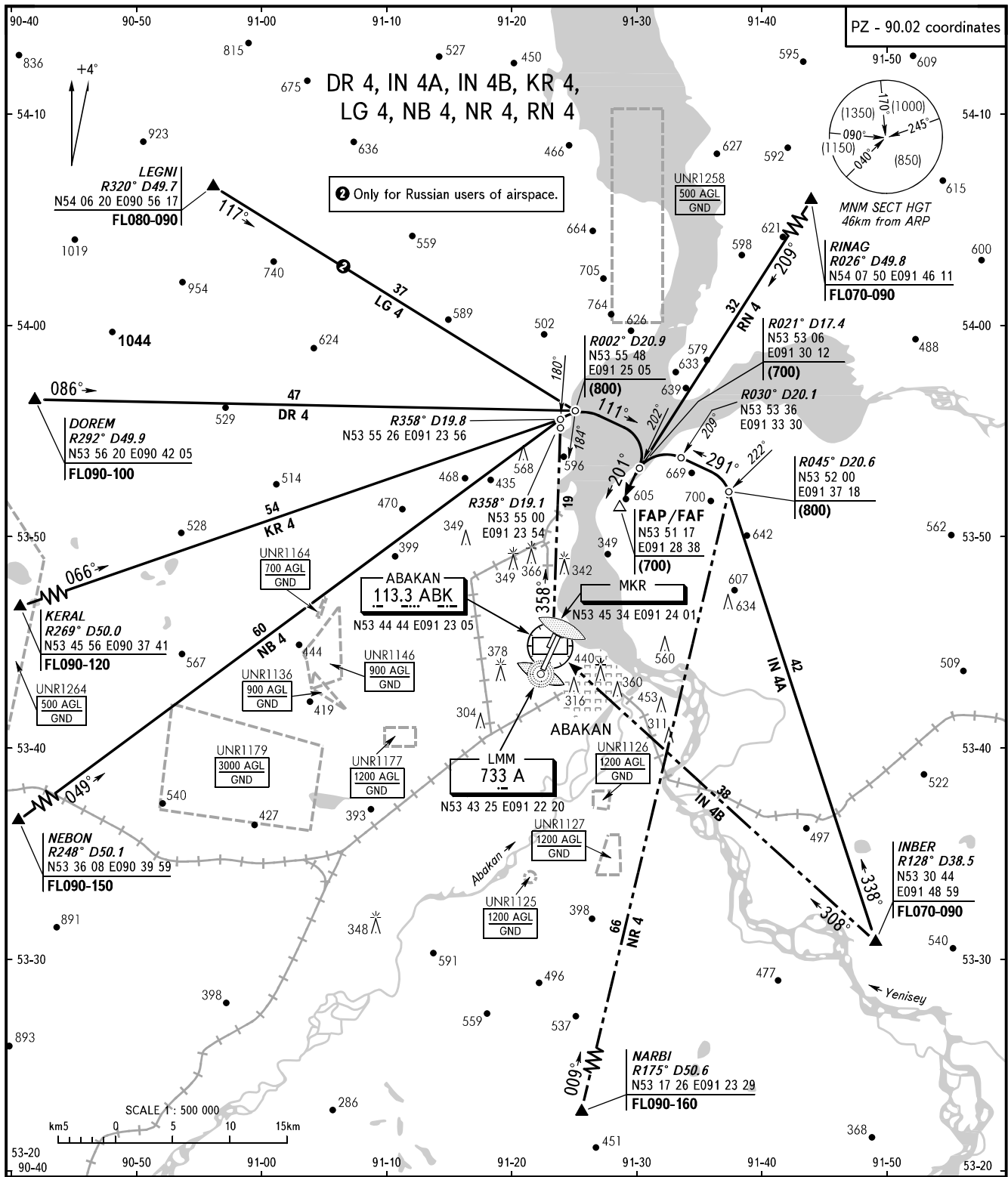
ABAKAN

RWY 20L

**STANDARD ARRIVAL CHART
INSTRUMENT (STAR) - ICAO**

TRANSITION
LEVEL : **1**

PZ - 90.02 coordinates



RADAR (Additionally serves as TAXIING) **134.3**

1 TRANSITION LEVEL:
 - FL070 when atmospheric pressure is 724mm mercury column or above;
 - FL080 when atmospheric pressure is less than 724mm mercury column.

BEARINGS AND TRACKS ARE MAGNETIC
 ALTITUDES, HEIGHTS AND ELEVATIONS ARE IN METRES
 DISTANCES ARE IN KILOMETRES

CHANGE: New chart