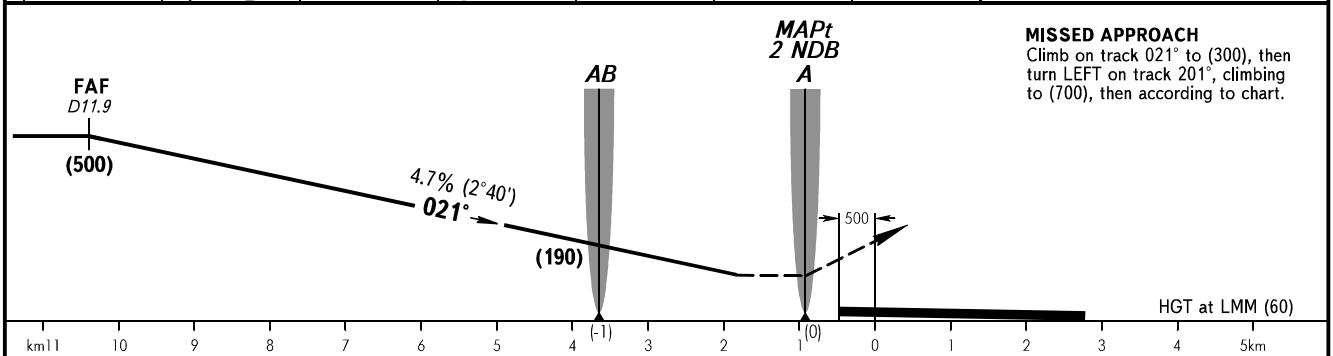
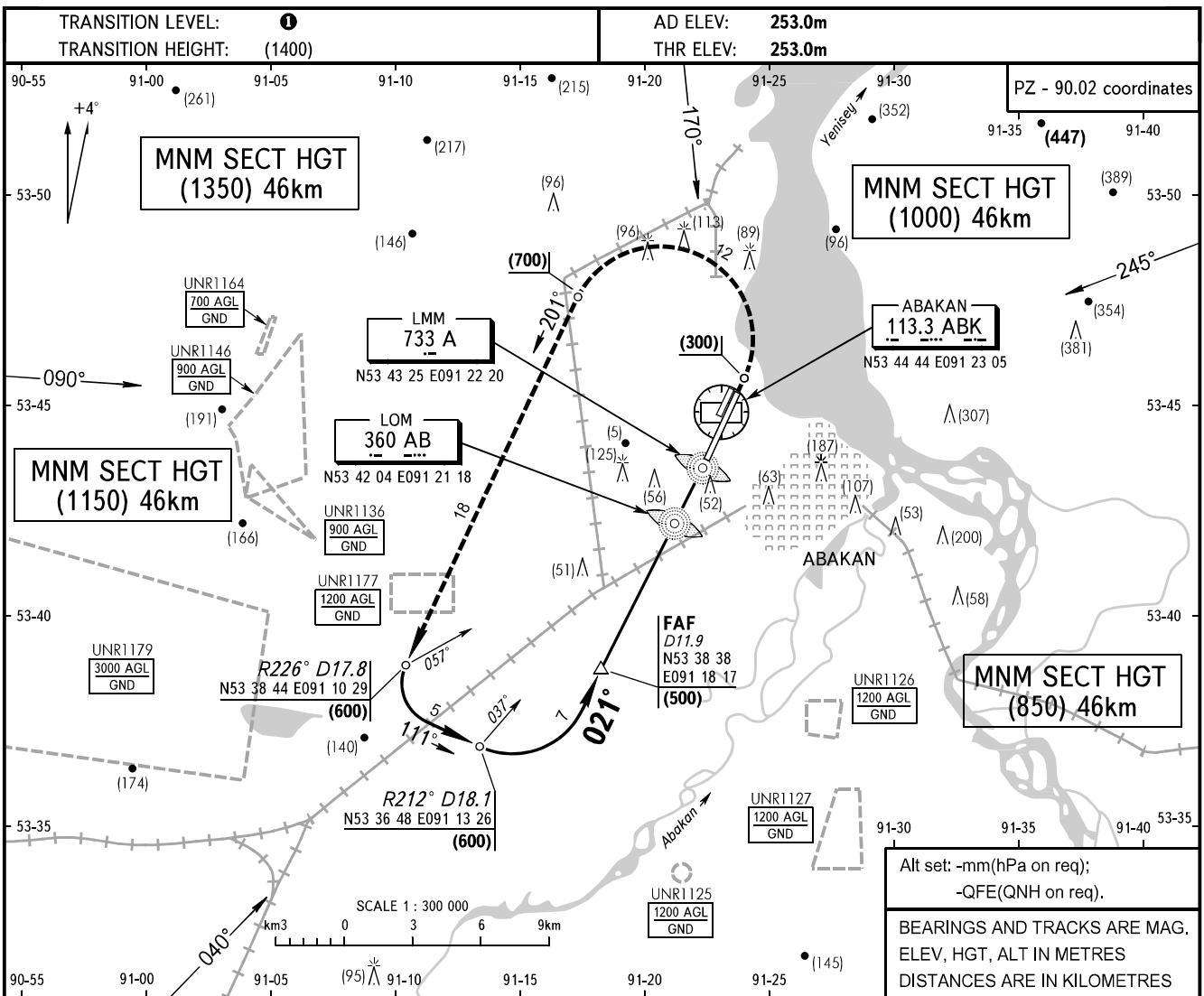


**INSTRUMENT  
APPROACH  
CHART - ICAO**

RADAR **134.3**  
START (Additionally serves as TAXIING) **122.0**

**ABAKAN, RUSSIA**  
ABAKAN  
2 NDB RWY 02R



Alt set: -mm(hPa on req);  
-QFE(QNH on req).  
BEARINGS AND TRACKS ARE MAG.  
ELEV, HGT, ALT IN METRES  
DISTANCES ARE IN KILOMETRES

**MISSED APPROACH**  
Climb on track 021° to (300), then  
turn LEFT on track 201°, climbing  
to (700), then according to chart.

| OCA/H            |          | A       | B        | C        | D        |      |      |      |      |      |      |      |
|------------------|----------|---------|----------|----------|----------|------|------|------|------|------|------|------|
| Straight-in      |          |         |          |          |          |      |      |      |      |      |      |      |
|                  | Approach |         |          |          |          |      |      |      |      |      |      |      |
| <b>2 NDB</b>     |          | 333(80) | 353(100) | 353(100) | 353(100) |      |      |      |      |      |      |      |
| GROUND SPEED     | km/h     | 150     | 180      | 210      | 240      | 270  | 300  | 330  | 360  | 390  | 420  | 450  |
| FAF - MAPt 9500m | min:sec  | 3.48    | 3.10     | 2.43     | 2.22     | 2.07 | 1.54 | 1.44 | 1.35 | 1.28 | 1.21 | 1.16 |
| RATE OF DESCENT  | m/s      | 2.0     | 2.4      | 2.7      | 3.1      | 3.5  | 3.9  | 4.2  | 4.7  | 5.1  | 5.5  | 5.9  |

**1** TRANSITION LEVEL:  
- FLO70 when atmospheric pressure is 724mm mercury column or above;  
- FLO80 when atmospheric pressure is less than 724mm mercury column.