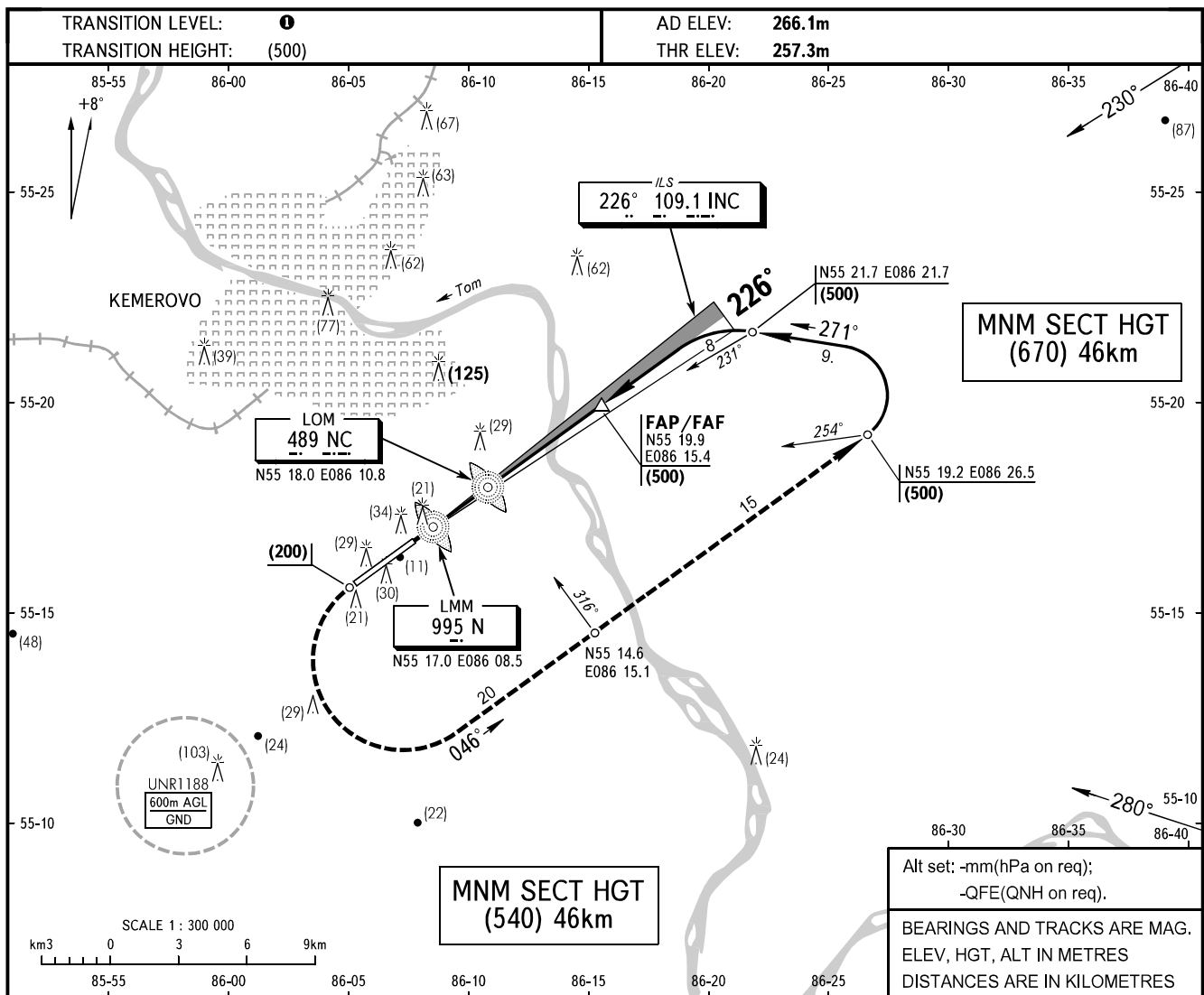


**INSTRUMENT
APPROACH
CHART - ICAO**

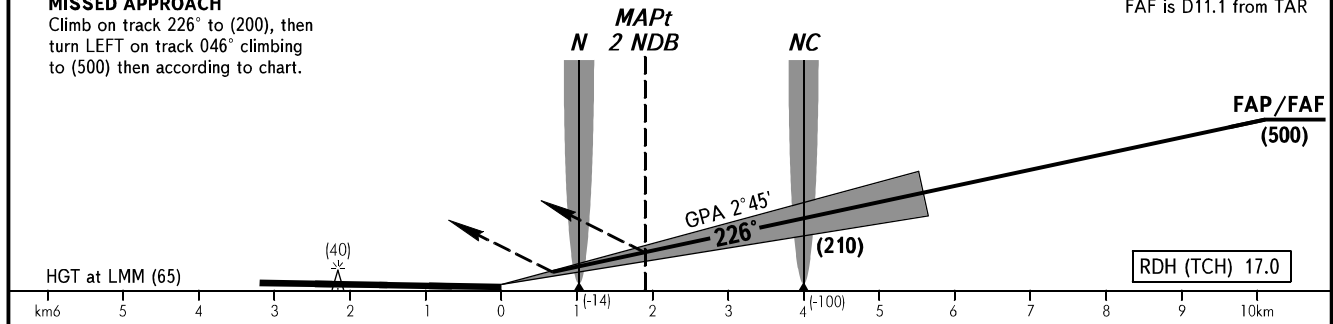
APPROACH FL150 or below **125.5**
START **118.3**

KEMEROVO, RUSSIA
KEMEROVO
ILS, 2 NDB RWY 23



MISSED APPROACH
Climb on track 226° to (200), then turn LEFT on track 046° climbing to (500) then according to chart.

FAF is D11.1 from TAR



OCA/H		A	B	C	D
Straight-in	CAT I	304(46)	307(49)	309(51)	314(56)
	2 NDB	366(108)	366(108)	366(108)	366(108)
Approach	NDB LOM	366(108)	366(108)	366(108)	366(108)
	NDB LMM	442(184)	442(184)	442(184)	442(184)

WARNING
Ground Proximity Warning System is subject to functioning.

① **TRANSITION LEVEL:**

- FL030 when atmospheric pressure is 760mm mercury column or above;
- FL040 when atmospheric pressure is 759-733mm mercury column;
- FL050 when atmospheric pressure is 732mm mercury column or less.

GROUND SPEED	km/h	150	180	210	240	270	300	330	360	390	420	450
LOM-THR 4002m	min:sec	1.36	1.20	1.08	1.00	0.53	0.48	0.44	0.40	0.37	0.34	0.32
RATE OF DESCENT (Grad 4.8%)	m/s	2.0	2.4	2.8	3.2	3.6	4.0	4.4	4.8	5.2	5.7	6.0