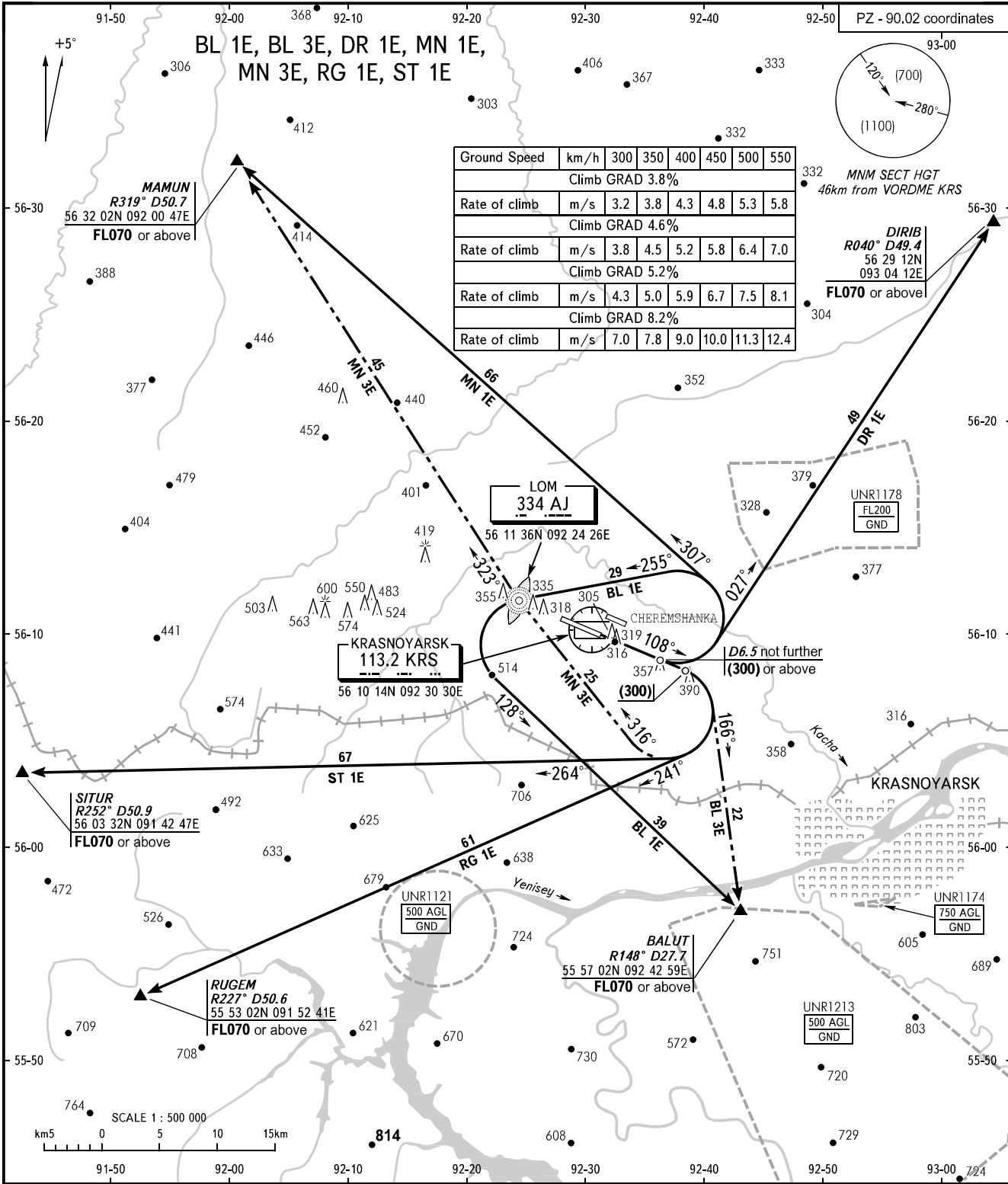


STANDARD DEPARTURE CHART
INSTRUMENT (SID) - ICAO

TRANSITION
HEIGHT : (1100)

KRASNOYARSK, RUSSIA
YEMELYANOVO
RWY 11



START 118.300
KRUG 122.000
APPROACH 127.700

- WARNING:**
1. RWY of Cheremshanka AD is located at 1800m north-east of Yemelyanovo AD in parallel with it.
 2. SID BL 3E shall be carried out by coordination with ATS unit, with the minimum climb gradient of 8.2%.
 3. The minimum climb gradient for SID BL 1E, MN 1E, DR 1E is 5.2% up to (300).
 4. The minimum climb gradient is 3.8% for SID DR 1E after crossing (300).
 5. The minimum climb gradient is 4.6% for SID BL 1E after crossing (300).

BEARINGS AND TRACKS ARE MAGNETIC
ALTITUDES, HEIGHTS AND ELEVATIONS ARE IN METRES
DISTANCES ARE IN KILOMETRES

CHANGE: OBST