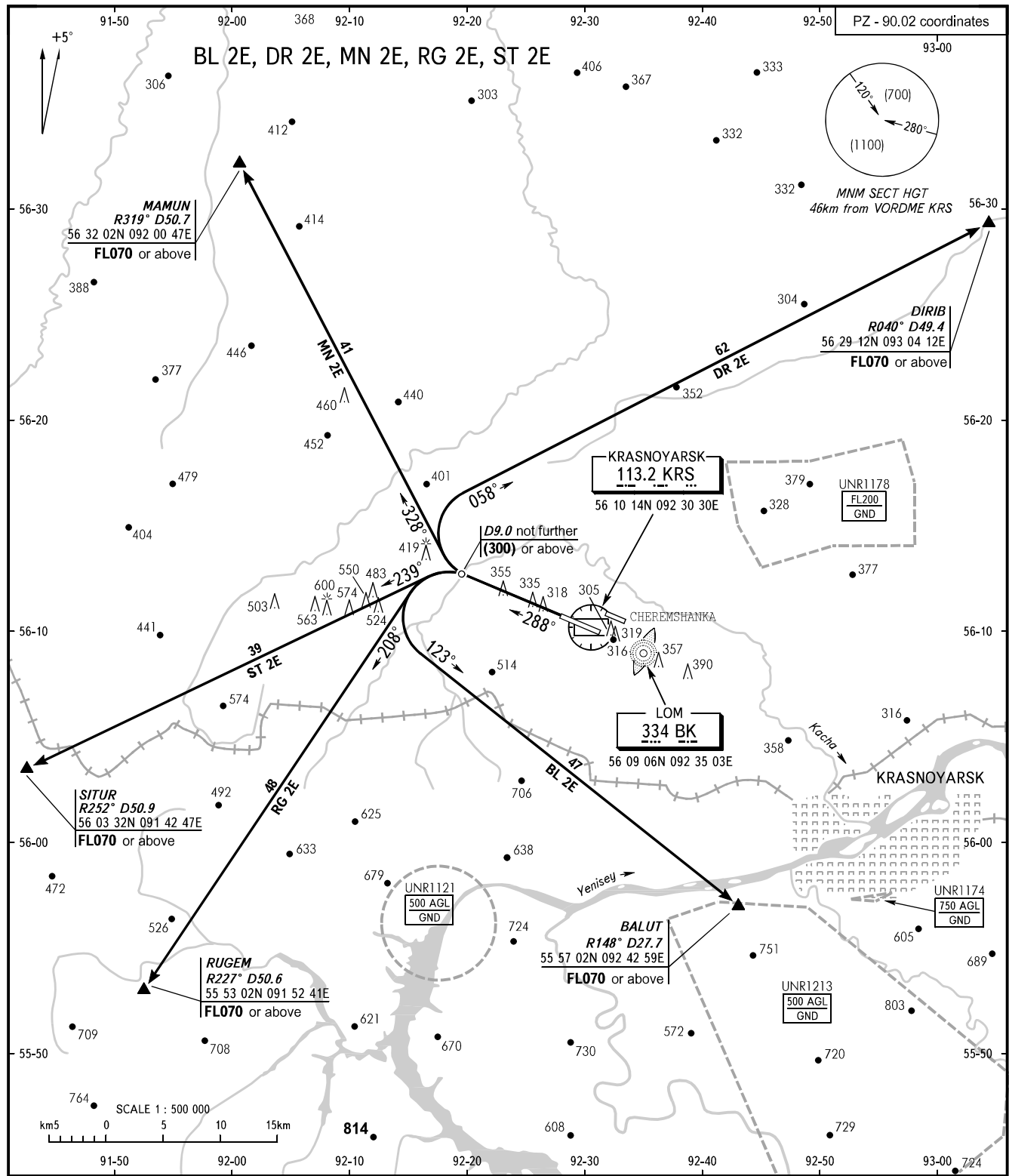


STANDARD DEPARTURE CHART  
INSTRUMENT (SID) - ICAO

TRANSITION  
HEIGHT : (1100)

KRASNOYARSK, RUSSIA  
YEMELYANOVO  
RWY 29



START **118.300**  
KRUG **122.000**  
APPROACH **127.700**

- WARNING:**
1. RWY of Cheremshanka AD is located at 1800m north-east of Yemelyanovo AD in parallel with it.
  2. The minimum climb gradient is 4.6% for SID BL 2E, RG 2E.
  3. The minimum climb gradient is 3.8% for SID MN 2E, ST 2E.

Ground Speed	km/h	300	350	400	450	500	550
Climb GRAD 3.8%							
Rate of climb	m/s	3.2	3.8	4.3	4.8	5.3	5.8
Climb GRAD 4.6%							
Rate of climb	m/s	3.8	4.5	5.2	5.8	6.4	7.0

BEARINGS AND TRACKS ARE MAGNETIC  
ALTITUDES, HEIGHTS AND ELEVATIONS ARE IN METRES  
DISTANCES ARE IN KILOMETRES

CHANGE: OBST