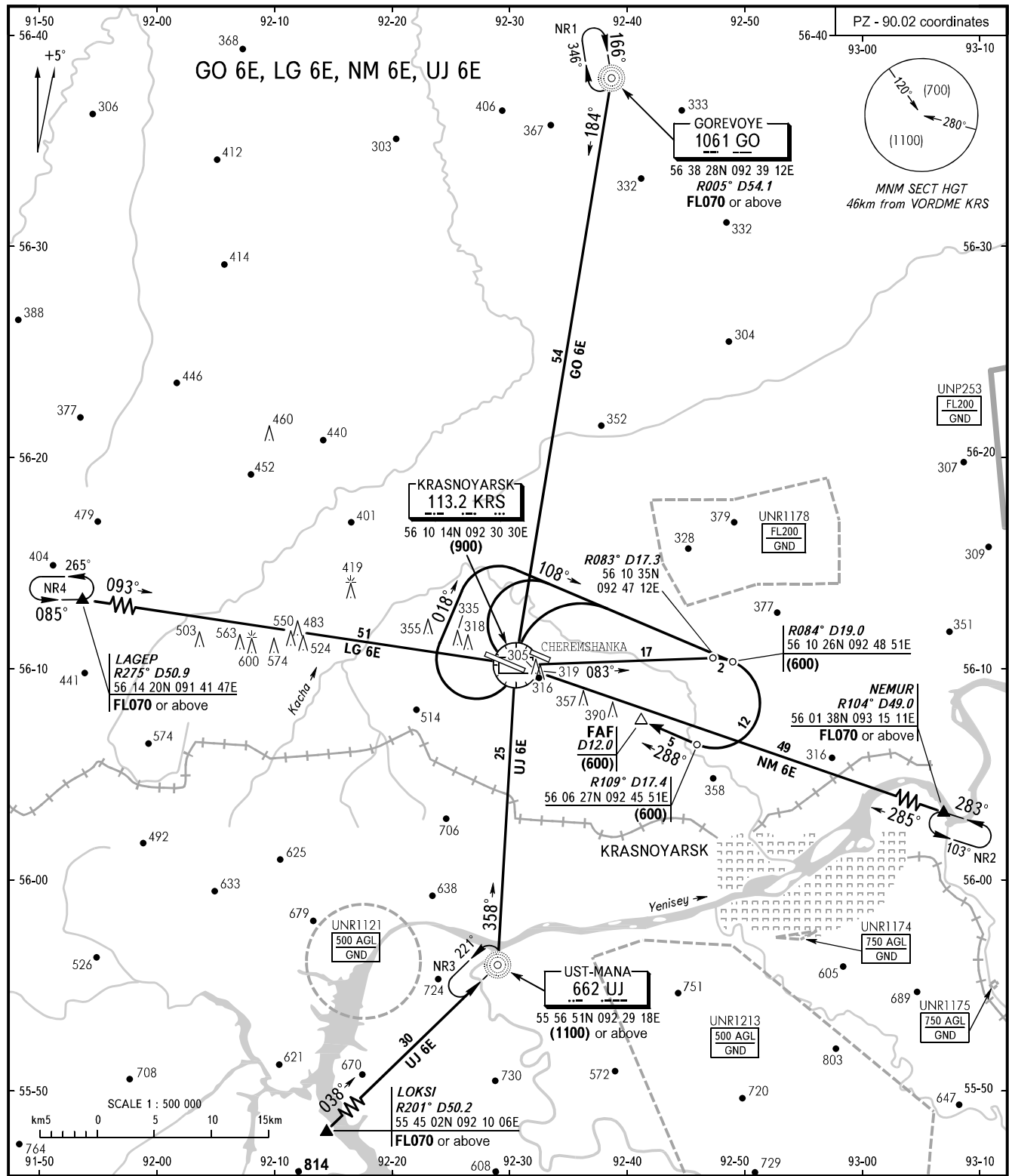


STANDARD ARRIVAL CHART
INSTRUMENT (STAR) - ICAO

TRANSITION
LEVEL: **FL060**

KRASNOYARSK, RUSSIA
YEMELYANOVO
VORDME RWY 29



APPROACH	127.700	WARNING RWY of Chereyshanka AD is located at 1800m north-east of Yemelyanovo AD in parallel with it.
KRUG	122.000	
START	118.300	

BEARINGS AND TRACKS ARE MAGNETIC
ALTITUDES, HEIGHTS AND ELEVATIONS ARE IN METRES
DISTANCES ARE IN KILOMETRES

CHANGE: OBST