

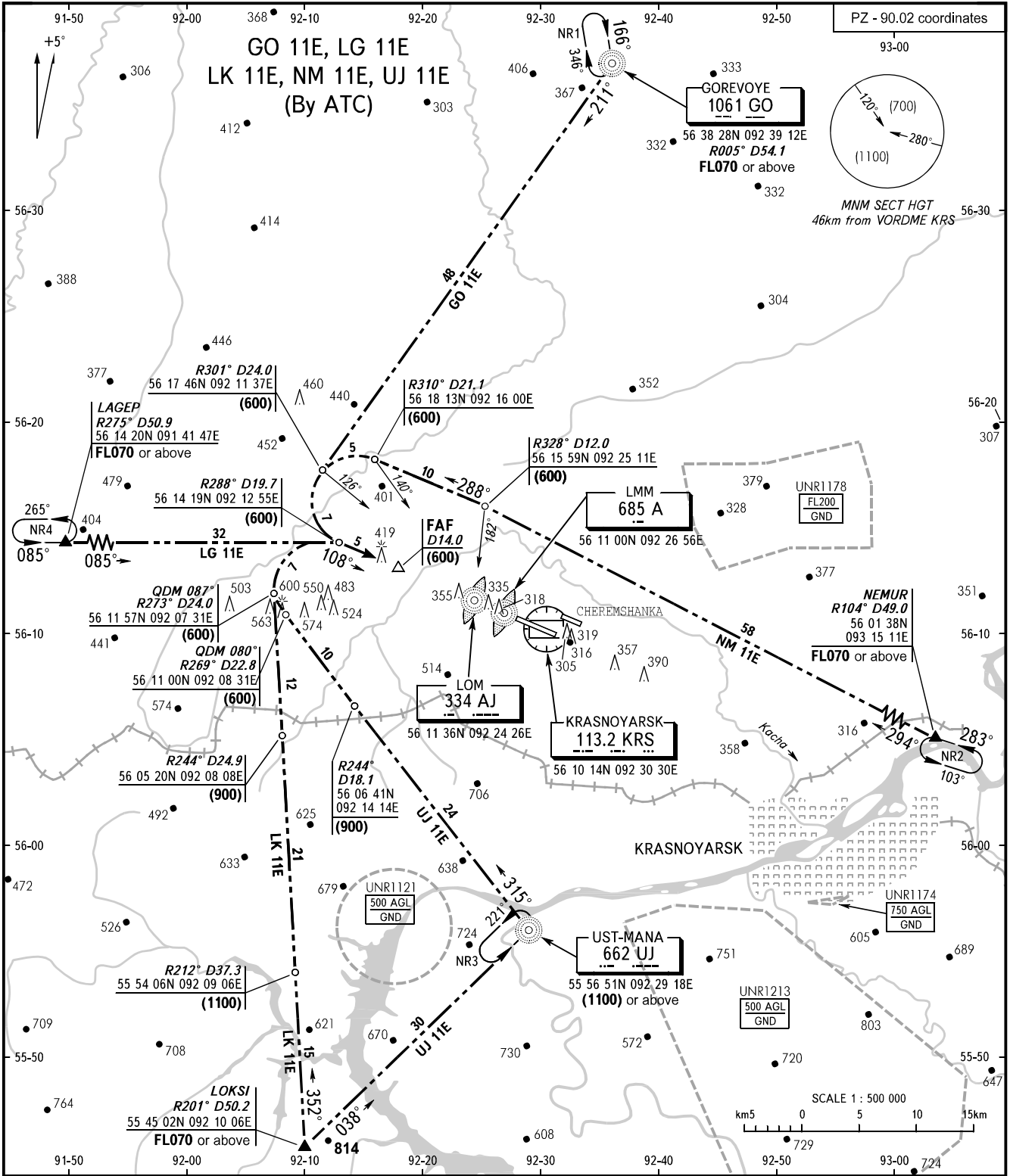
STANDARD ARRIVAL CHART  
INSTRUMENT (STAR) - ICAO

TRANSITION  
LEVEL : **FL060**

**KRASNOYARSK, RUSSIA**

YEMELYANOVO

RWY 11



APPROACH	127.700
KRUG	122.000
START	118.300

**WARNING**  
RWY of Cheremshanka AD is located at 1800m north-east of Yemelyanovo AD in parallel with it.

BEARINGS AND TRACKS ARE MAGNETIC  
ALTITUDES, HEIGHTS AND ELEVATIONS ARE IN METRES  
DISTANCES ARE IN KILOMETRES

CHANGE: OBST