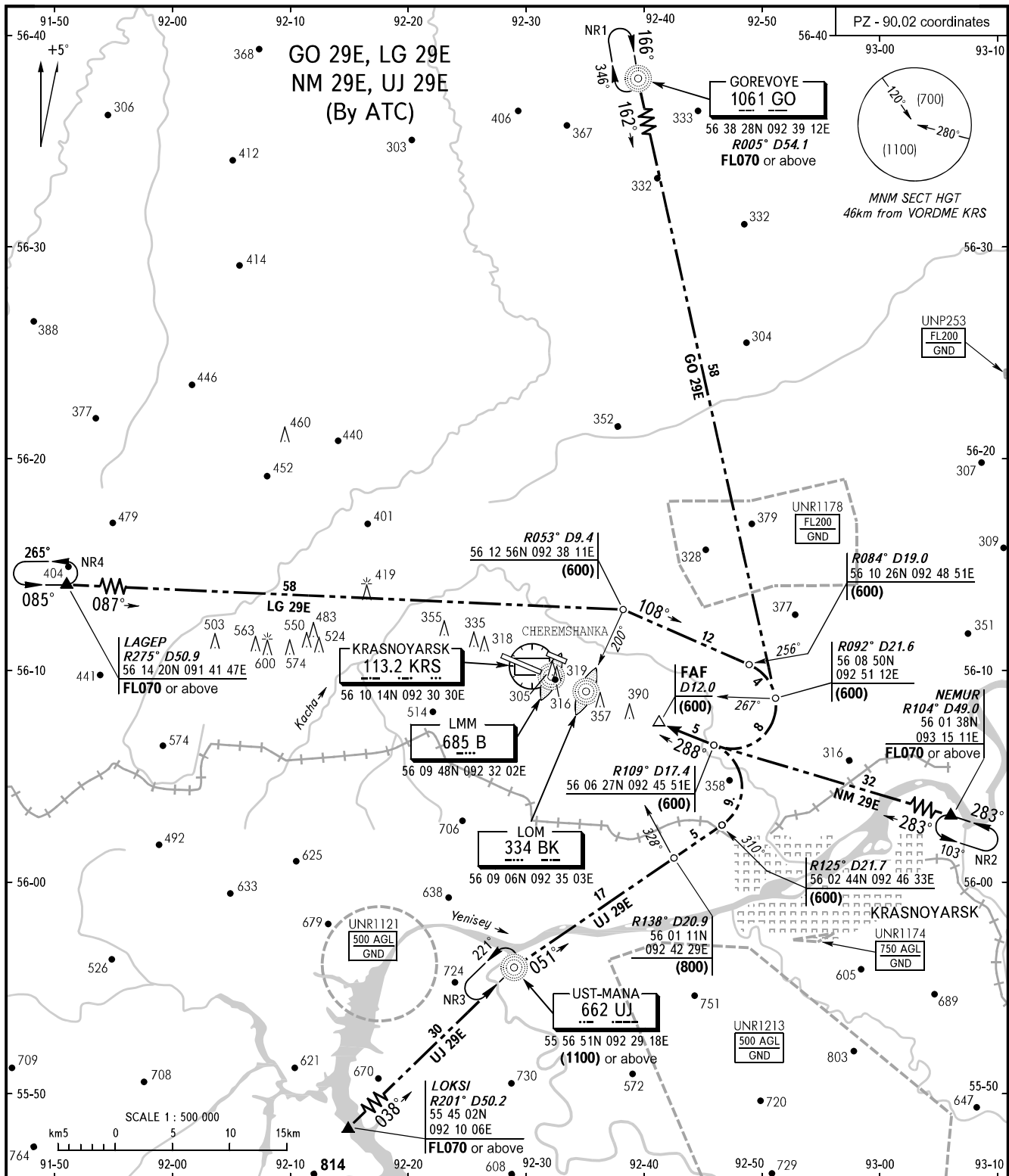


STANDARD ARRIVAL CHART
INSTRUMENT (STAR) - ICAO

TRANSITION
LEVEL: **FL060**

KRASNOYARSK, RUSSIA
YEMELYANOVO
RWY 29



APPROACH **127.700**
KRUG **122.000**
START **118.300**

WARNING
RWY of Cheremshanka AD is located at 1800m north-east of Yemelyanovo AD in parallel with it.

BEARINGS AND TRACKS ARE MAGNETIC
ALTITUDES, HEIGHTS AND ELEVATIONS ARE IN METRES
DISTANCES ARE IN KILOMETRES