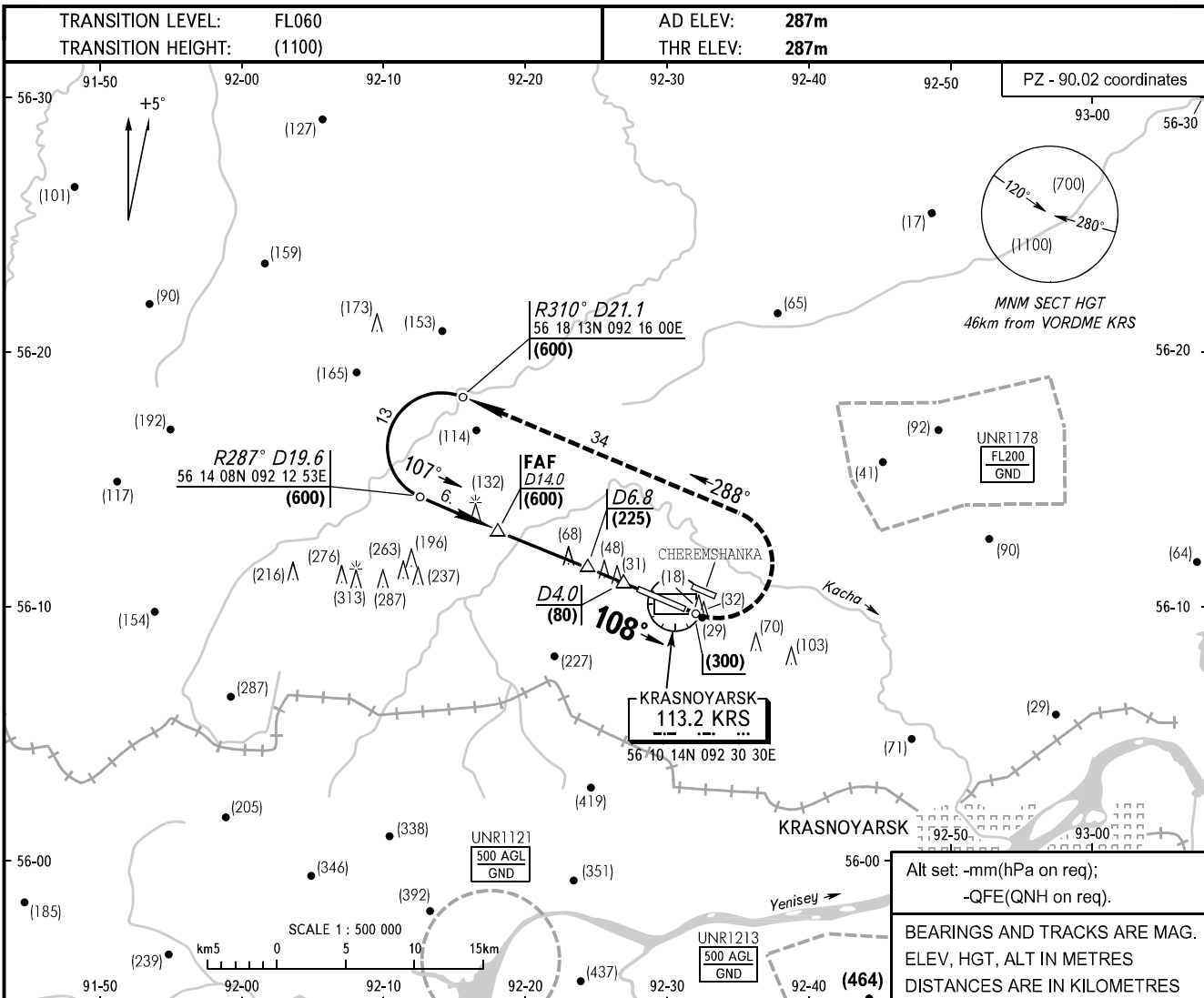


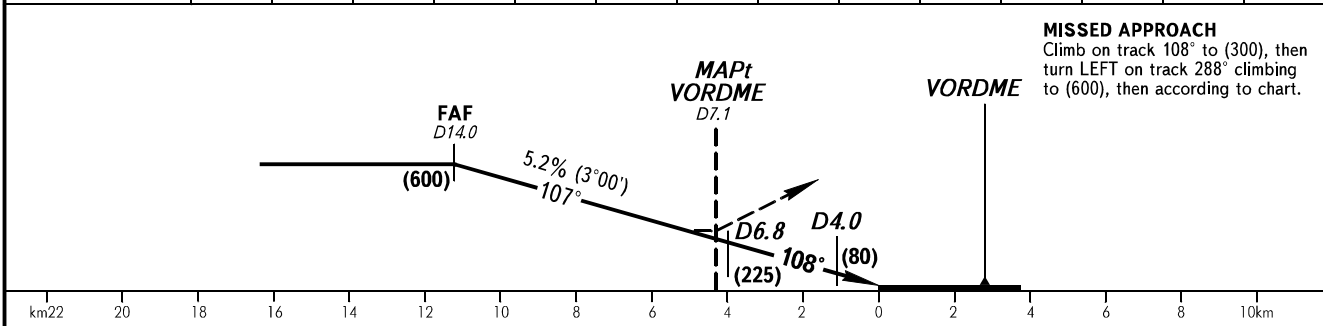
**INSTRUMENT
APPROACH
CHART - ICAO**

KRUG	122.000
START	118.300
TOWER	118.300

**KRASNOYARSK, RUSSIA
YEMELYANOVO
VORDME, VOR RWY 11**



THR DISTANCE	11.2	10.0	9.0	8.0	7.0	6.0	5.0	4.0	3.0	2.0	1.17	THR	
DME KRS	14.0	12.8	11.8	10.8	9.8	8.8	7.8	6.8	5.8	4.8	4.0	2.8	
HAT	600	540	490	435	380	330	280	225	170	120	80	15	



OCA/H		A	B	C	D	WARNING RWY of Cheremshanka AD is located at 1800m north-east of Yemelyanovo AD in parallel with it.
Straight-in	VORDME	557(270)	557(270)	557(270)	557(270)	
Approach	VOR	557(270)	557(270)	557(270)	557(270)	

GROUND SPEED	km/h	120	150	180	210	240	270	300	330	360
D6.8 - THR 4000m	min:sec	2.00	1.36	1.20	1.09	1.00	0.53	0.48	0.44	0.40
RATE OF DESCENT	m/s	1.7	2.2	2.6	3.0	3.5	3.9	4.3	4.8	5.2

CHANGE: OBST