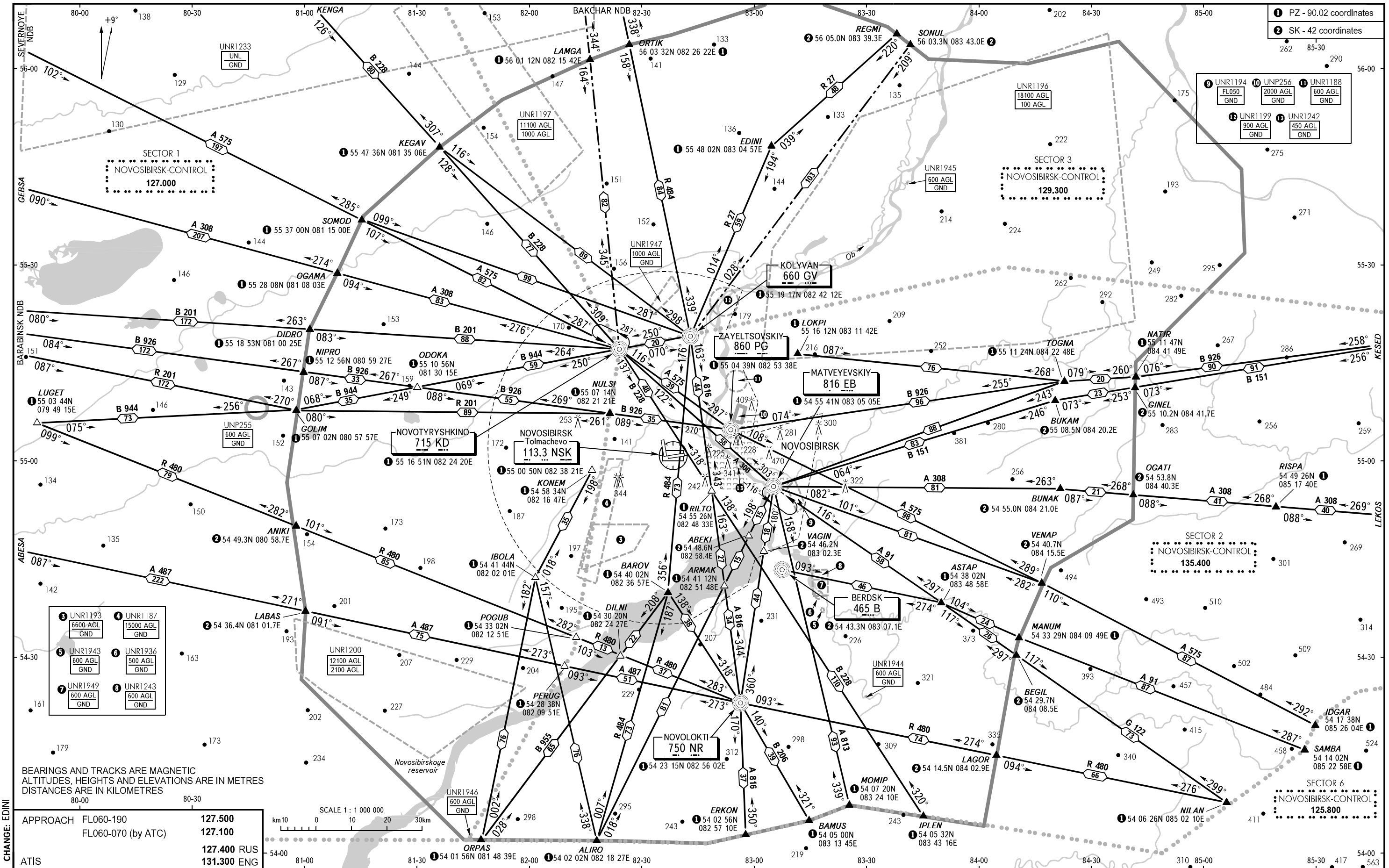


AREA CHART - ICAO

ARRIVAL, DEPARTURE
AND TRANSIT ROUTES

NOVOSIBIRSK, RUSSIA

TOLMACHEVO



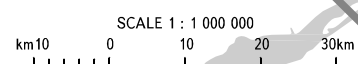
1 PZ - 90.02 coordinates
2 SK - 42 coordinates

9 UNR1194 18100 AGL 100 AGL
10 UNP256 2000 AGL GND
11 UNR1188 600 AGL GND
12 UNR1199 900 AGL GND
13 UNR1242 450 AGL GND

3 UNR1193 6600 AGL GND
4 UNR1187 15000 AGL GND
5 UNR1943 600 AGL GND
6 UNR1936 500 AGL GND
7 UNR1949 600 AGL GND
8 UNR1243 600 AGL GND

BEARINGS AND TRACKS ARE MAGNETIC
ALTITUDES, HEIGHTS AND ELEVATIONS ARE IN METRES
DISTANCES ARE IN KILOMETRES

APPROACH	FL060-190	127.500
	FL060-070 (by ATC)	127.100
ATIS		127.400 RUS 131.300 ENG



CHANGE: EDINI